

GEODES



DATA
TERRA



anr®
agence nationale
de la recherche

toulouse
métropole

THE INFORMATION PORTAL
& DATA EARTH OBSERVATION PLATFORM
OF CNES

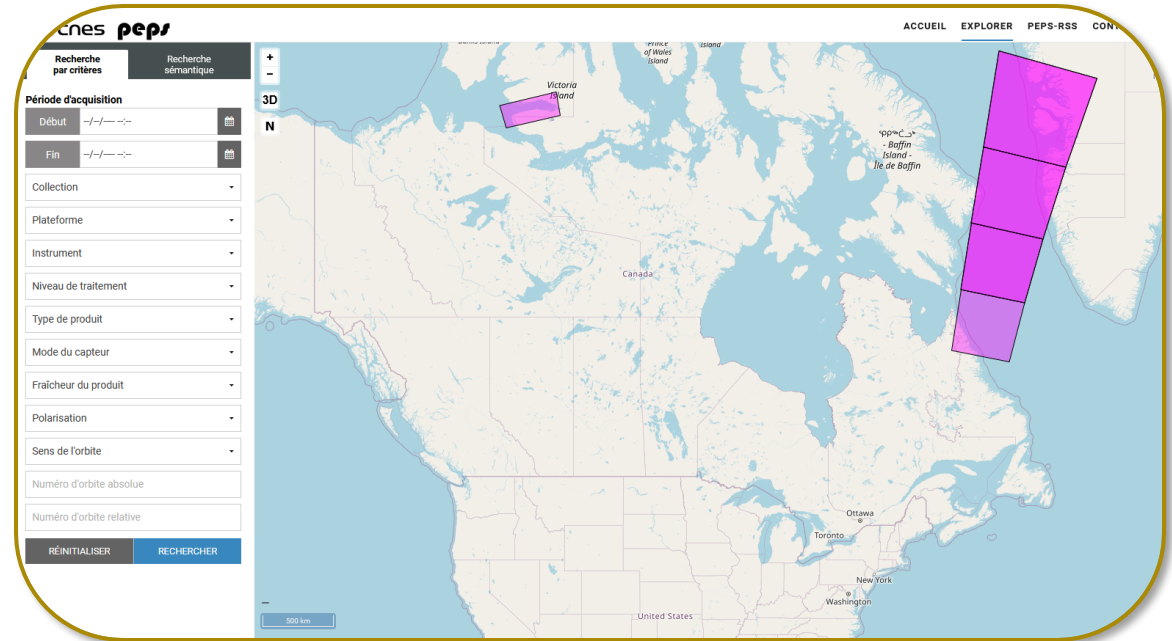


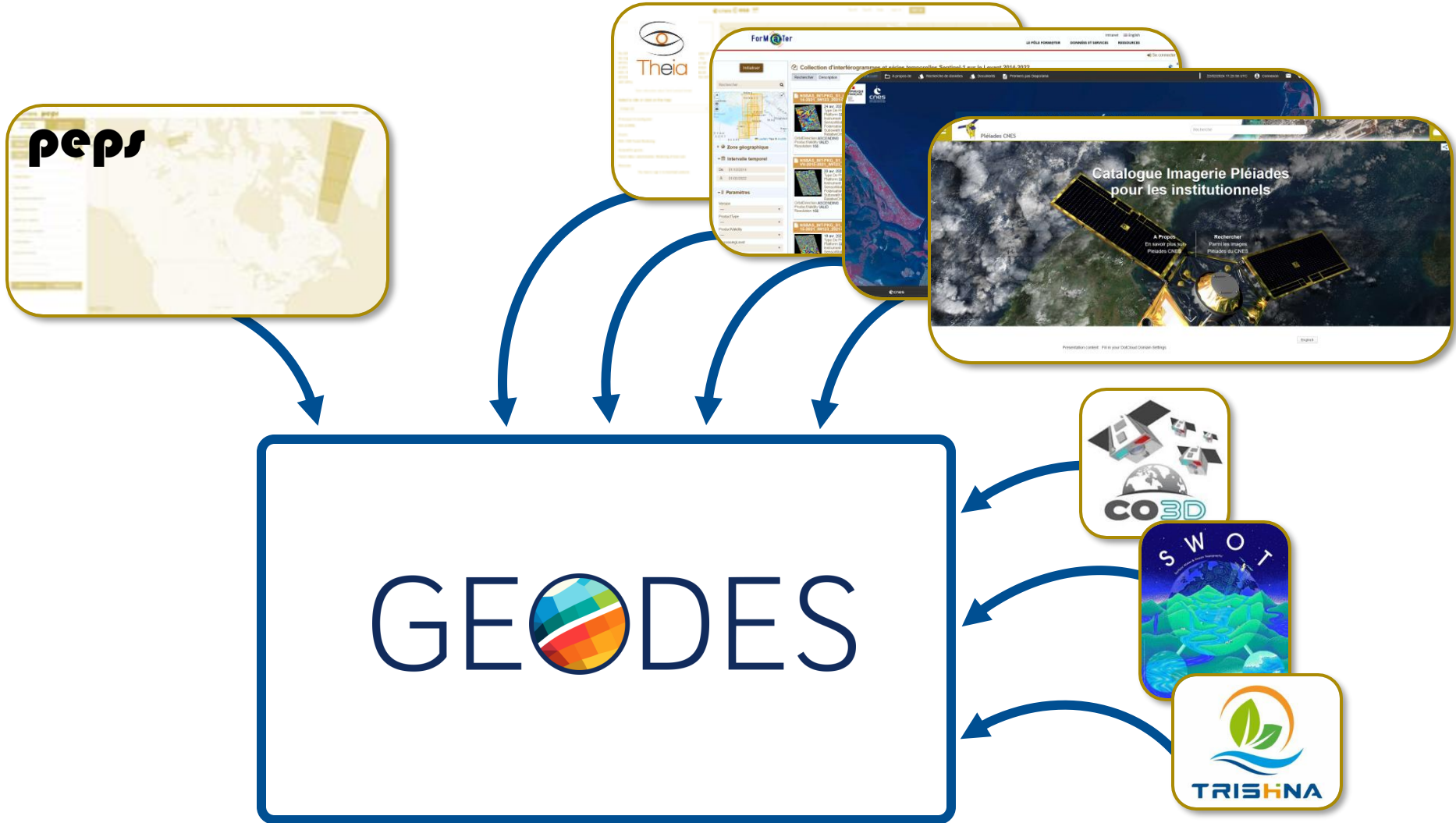
GEODES TEAM

MARCH 2025

peps

- Nearly 10 years of Copernicus data distribution thanks to the Collaborative Ground Segment
- 10000+ registered users from France and around the world





GEODES : ONE PORTAL & ONE PLATFORM

COMMUNICATION PORTAL



DATA & SERVICES PLATFORM



geodes.cnes.fr

SERVICE CATALOG

ALL

PUBLICS ET PRIVATE ACTORS

DATA TERRA & CNES
PROJECTS

SERVICES POUR TOUS

SERVICES POUR LES COMMUNAUTÉS

SERVICES AVANCÉS



DÉCOUVERTE & **EXPLORATION**

- Découverte et recherche de données
- Portail de valorisation
- Visualisation de la donnée
- Téléchargement de données



DÉVELOPPEMENT & **INNOVATION**

- Traitements à la demande, interactifs et avancés
- Accompagnement, maturation
- Gestion de la connaissance
- Échanges de données inter-centres

Découvrir



SCIENCE & **EXPLOITATION**

- Gestion des catalogues et des données
- Reporting
- Gestion des quotas
- Hypervision

DONNEES OT

EO Missions from CNES

SWH



Next : PWH, SWOT, CO3D, MICROCARB ...

CDS Data Terra / CNES



Postel, Take5
OSO

ForM@Ter Flatsim

Next :

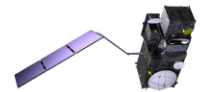


Copernicus missions

S1 (A/B), S2 (A/B)

Next : S1C

Continuité de service PEPS

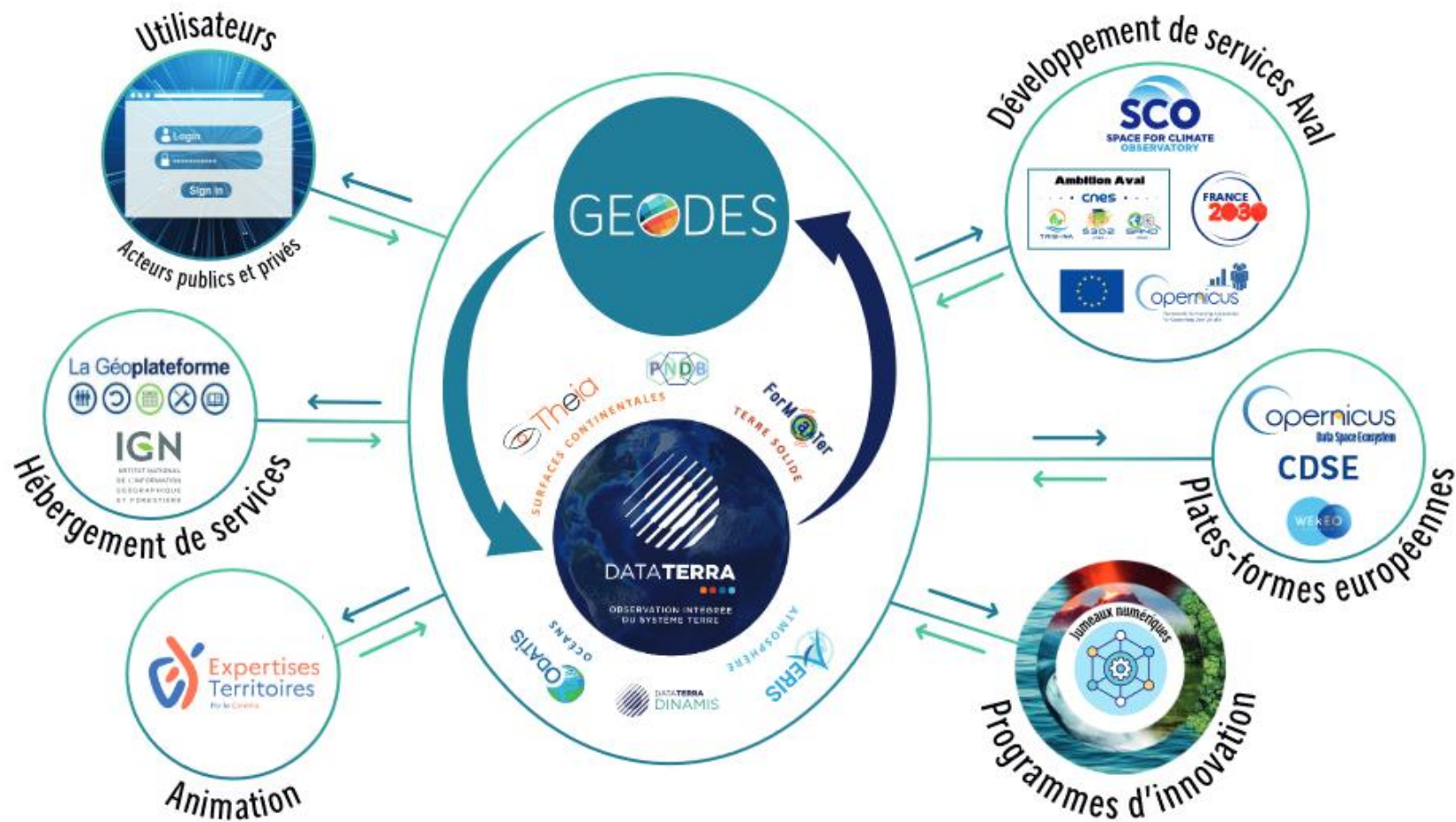


Commercial data

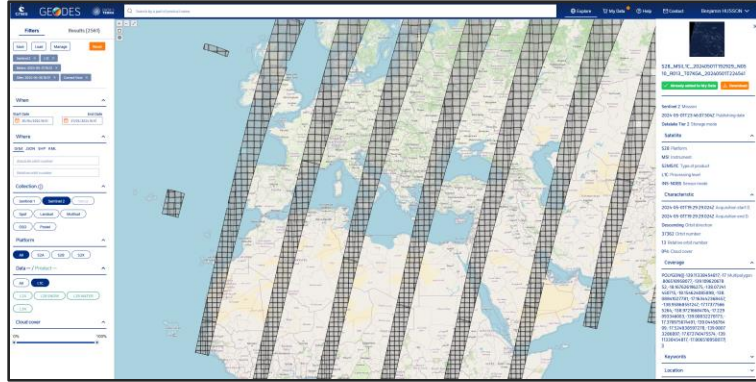
Next : PNEO, ...

In partnership with Data Terra

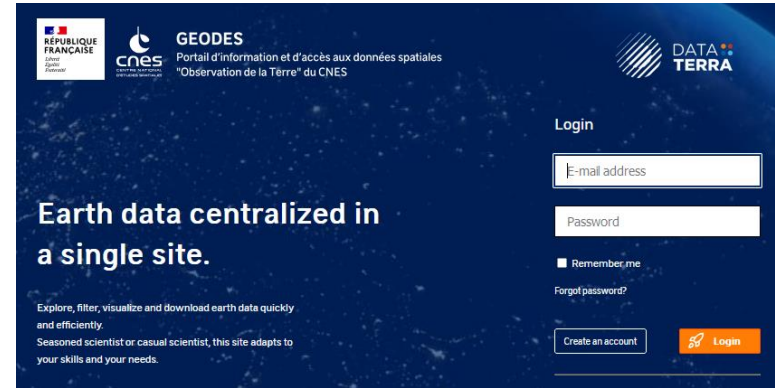
FEDERATION & INTEROPERABILITY TO SUPPORT SCIENCE & INNOVATION



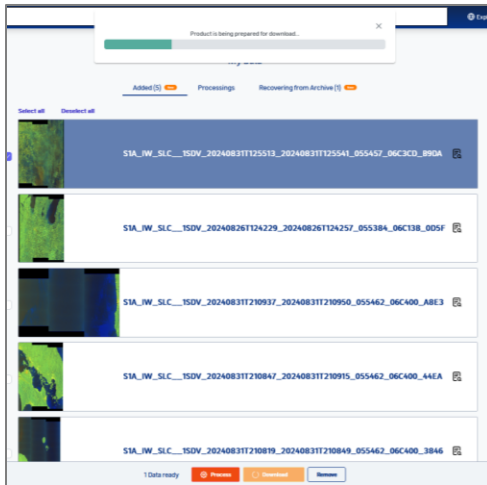
FIRST SERVICES SUPPORTED IN GEODES



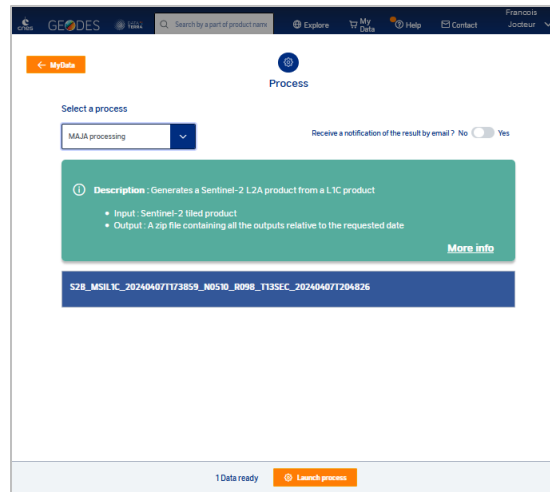
WEB AND STAC INTERFACE



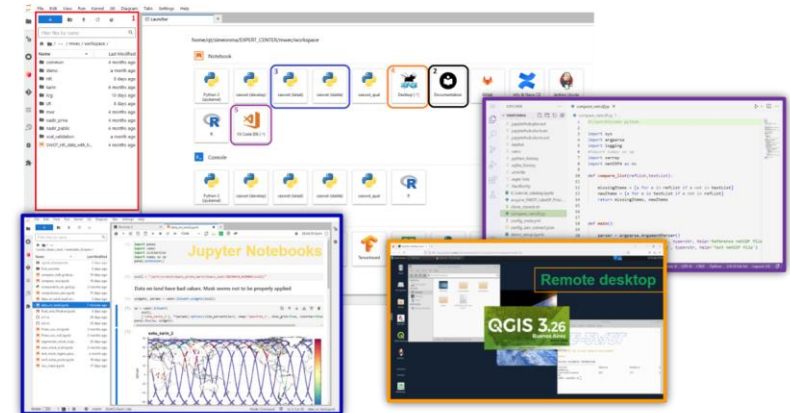
AUTHENTICATION & ACCESS MANAGEMENT



DOWNLOAD



ON-DEMAND PROCESSING



DATALABS

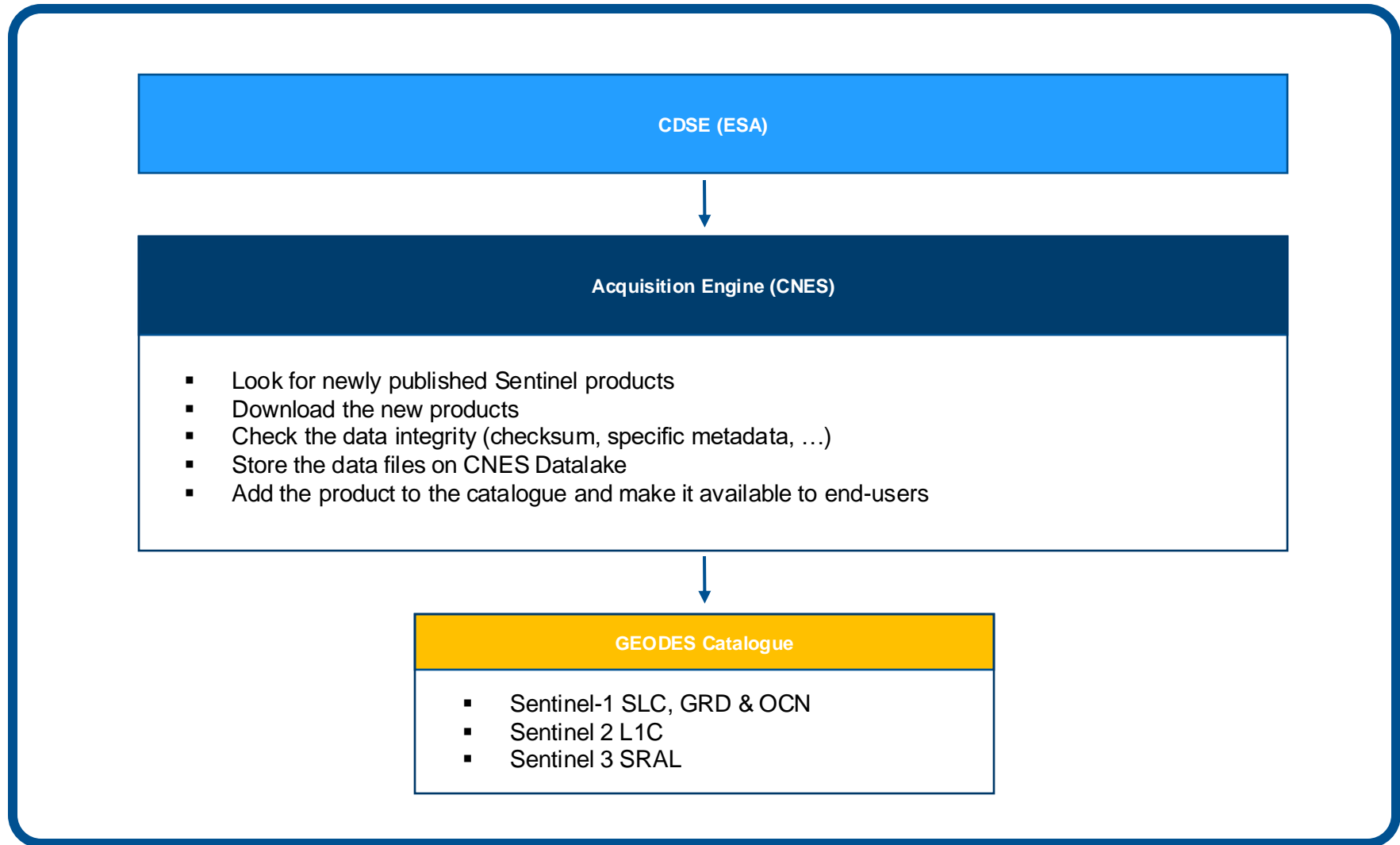
**25
Pb**

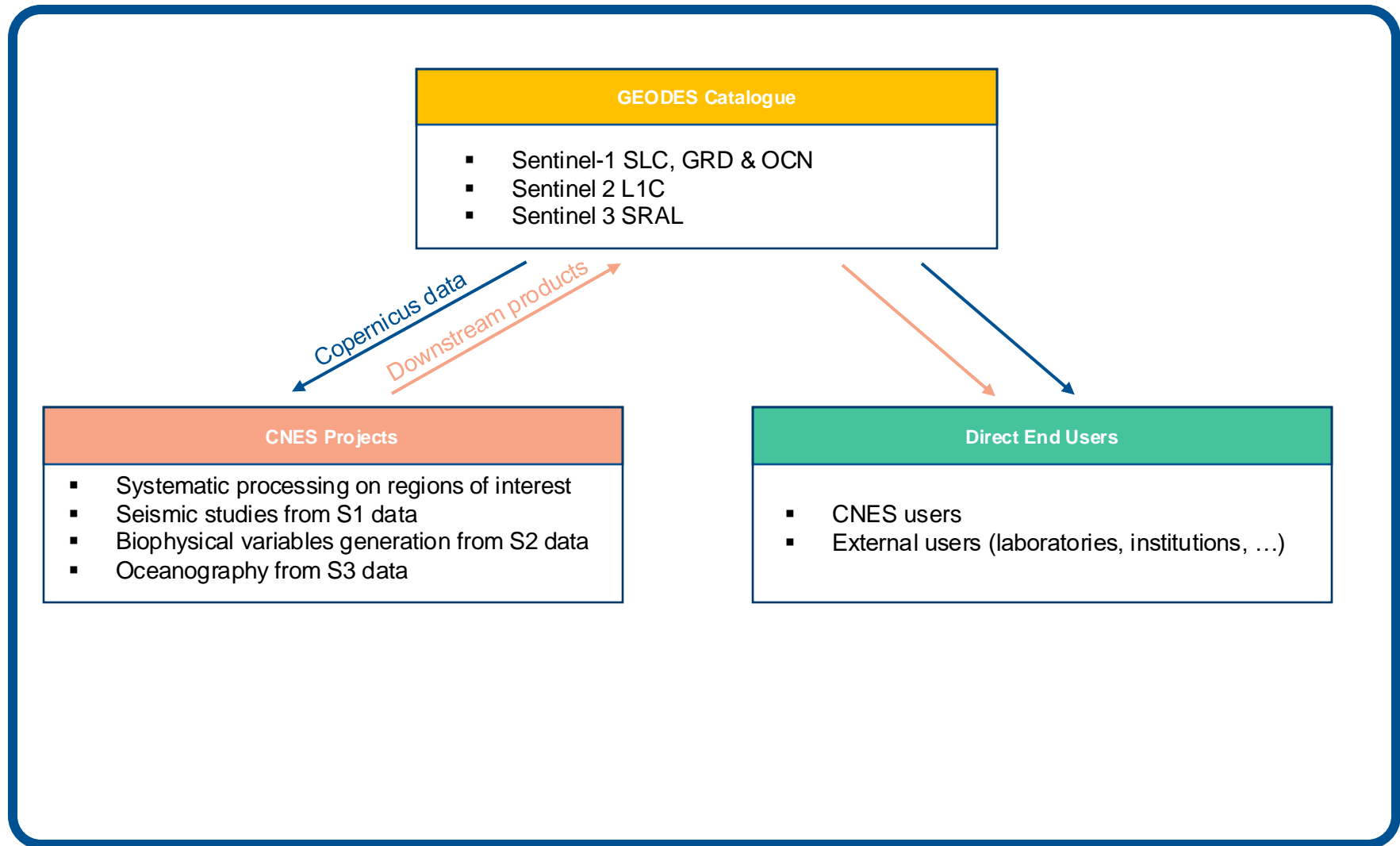
**43+
millions
products**

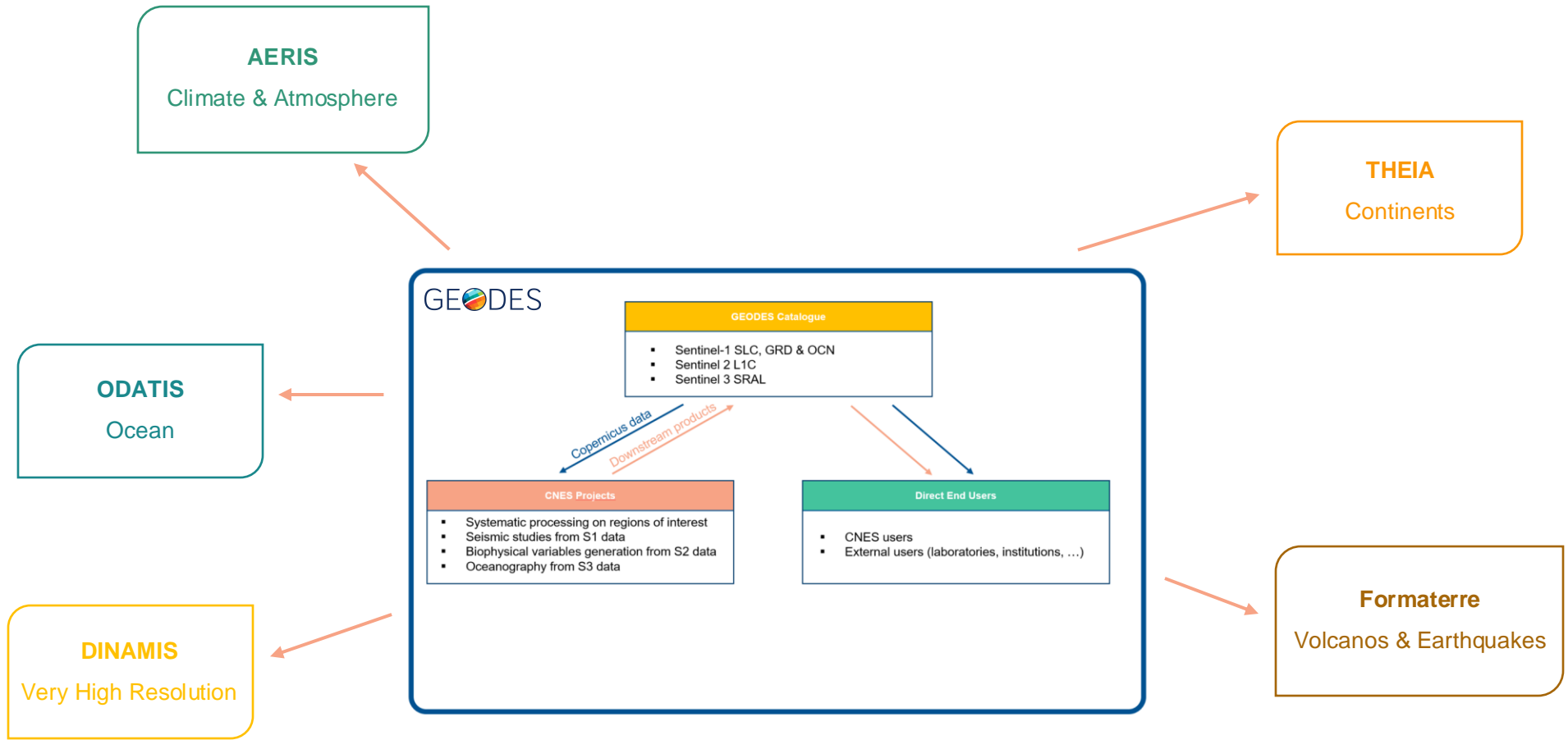
**Sentinel 1
(A/B)**

**Sentinel 2
(A/B/C)**

**Spot
World
Heritage**







GEODES acts as an **access point** for national research portals (IR Data Terra)

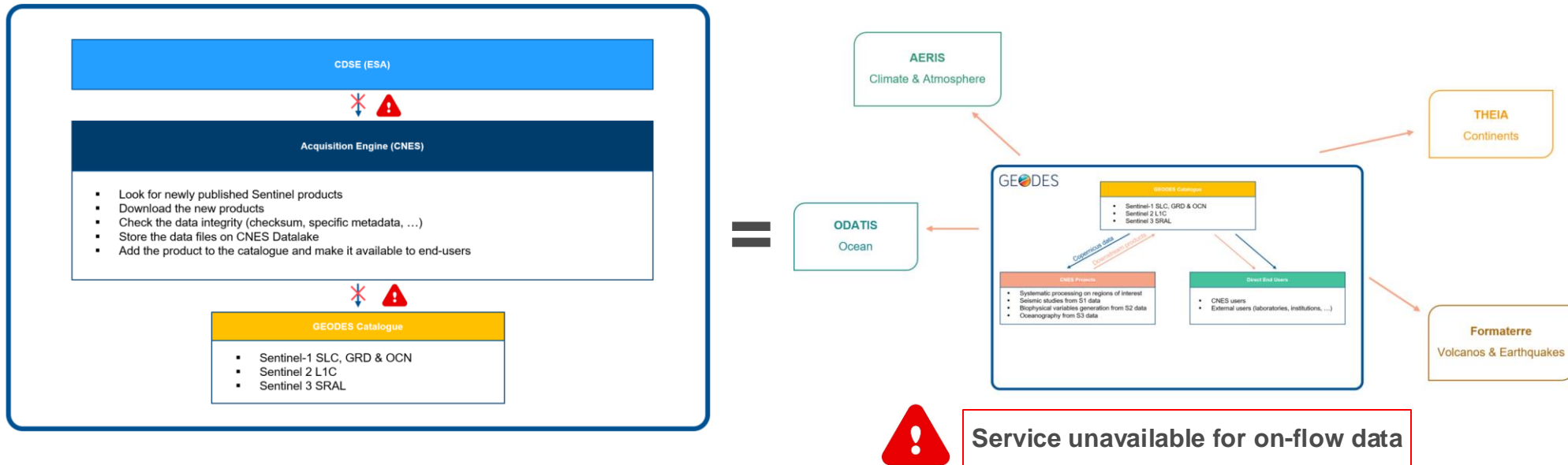
→ Downstreaming products (L2, L3, ...)



Some advantages of storing Copernicus data at CNES :

- Data is **close to processing chains**
- Data is **close to users**
- CNES can **manage dedicated quota and rights** to ensure users and partners can access data with as little restrictions as possible
- Allows for a **hybrid setup** where data is stored at CNES and processed on a private Cloud server

Risks to be considered :



31/01/2024 08:17:24 (UTC)
GDA (4)
FR

Dashboard

CATALOG

- Dashboard Grafana
- Dashboard Catalog

PORTAL

- Dashboard Grafana
- Site Portal

MONITORING

- Dashboard Grafana

MÉTRIQUES

- Nombre de visiteurs
- Nombre de téléchargements
- Métriques JDE

JOURNAL D'EXPLOITATION

- Tickets ouverts
- Tickets fermés

ADMIN

- Gestionnaire de conteneurs
- Centreon

Catalog / Détails CATALOG

SERVICE D'ADMINISTRATION CATALOG
Disponible

PREP-INGESTION
Disponible avec erreurs

INGESTION
Disponible et non utilisé

MOISSONNAGE DU FEM
Disponible et non utilisé

SERVICES D'ADMINISTRATION (7 panels)

- INGESTION
- cat-regards_rs-notifier **Disponible**
- cat-regards_rs-fem **Disponible**
- cat-regards_rs-storage **Disponible**
- cat-regards_rs-rabbitmq **Disponible**

ETAT DE L'INGESTION

INGESTIONS (SUR LA PERIODE)

Nombre de références à traiter sur la période	231082
Nombre de références envoyées à la BD sur la période	231082

What is much appreciated :

- Overall well rounded service with a **steady data access**
- **Great support** : reactive helpdesk
- Sufficient **quota and bandwidth** to allow fast distribution of data to end-users

What would be awesome to have :

An improved communication process for technical matters impacting CollGS partners.

Observation → the CDSE Event page does not provide enough information for technical centers.

Proposal → **direct communication** (email) on :

- Network modifications (IP addresses, ...)
- Major API upgrades
- Products format changes
- ...

The email list used to ask for **annual CollGS activity reports** could be used for such technical communications.

Project Managers

For any CollGS related topic

François JOCTEUR MONROZIER
francois.jocteur-monrozier@cnes.fr



Bertrand LEGRAS
bertrand.legras@cnes.fr

Operations Manager

For any technical matter



Benjamin HUSSON
benjamin.husson@cnes.fr

Data format Expert

For any exchange regarding Sentinel
format or ZARR/COG conversion



Hugo FOURNIER
hugo.fournier@cnes.fr