

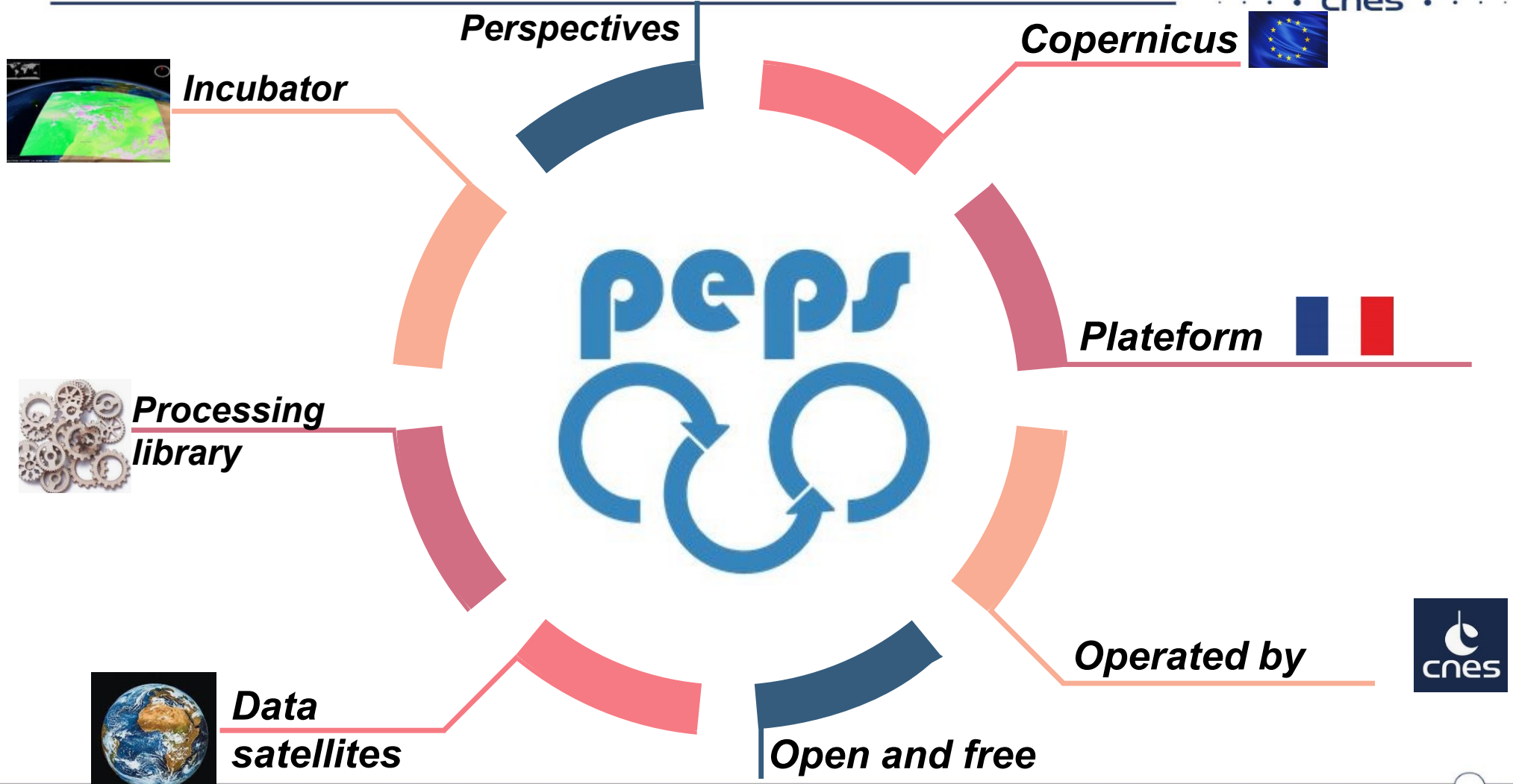


PEPS
**Free provision of Sentinel data for scientific &
business uses**

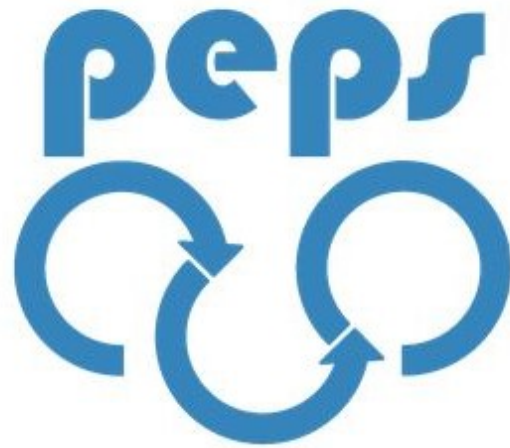
Isabelle Soleilhavoup
Richard Moreno

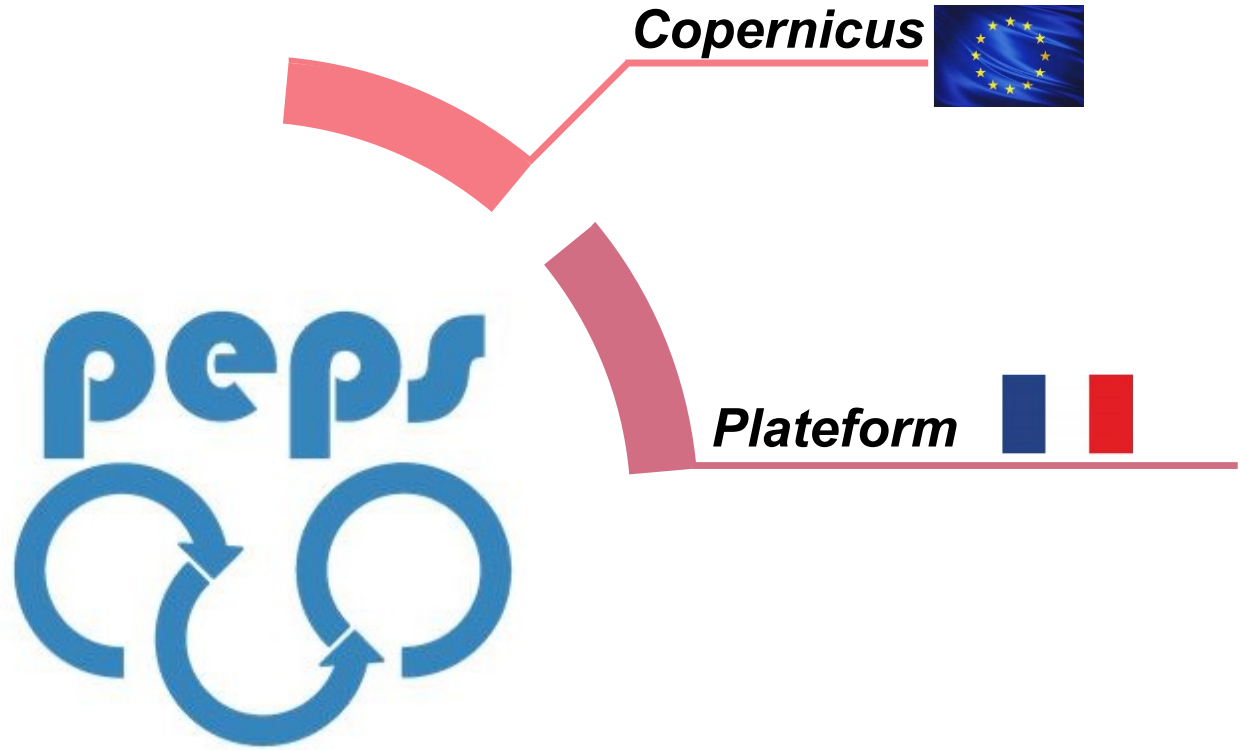


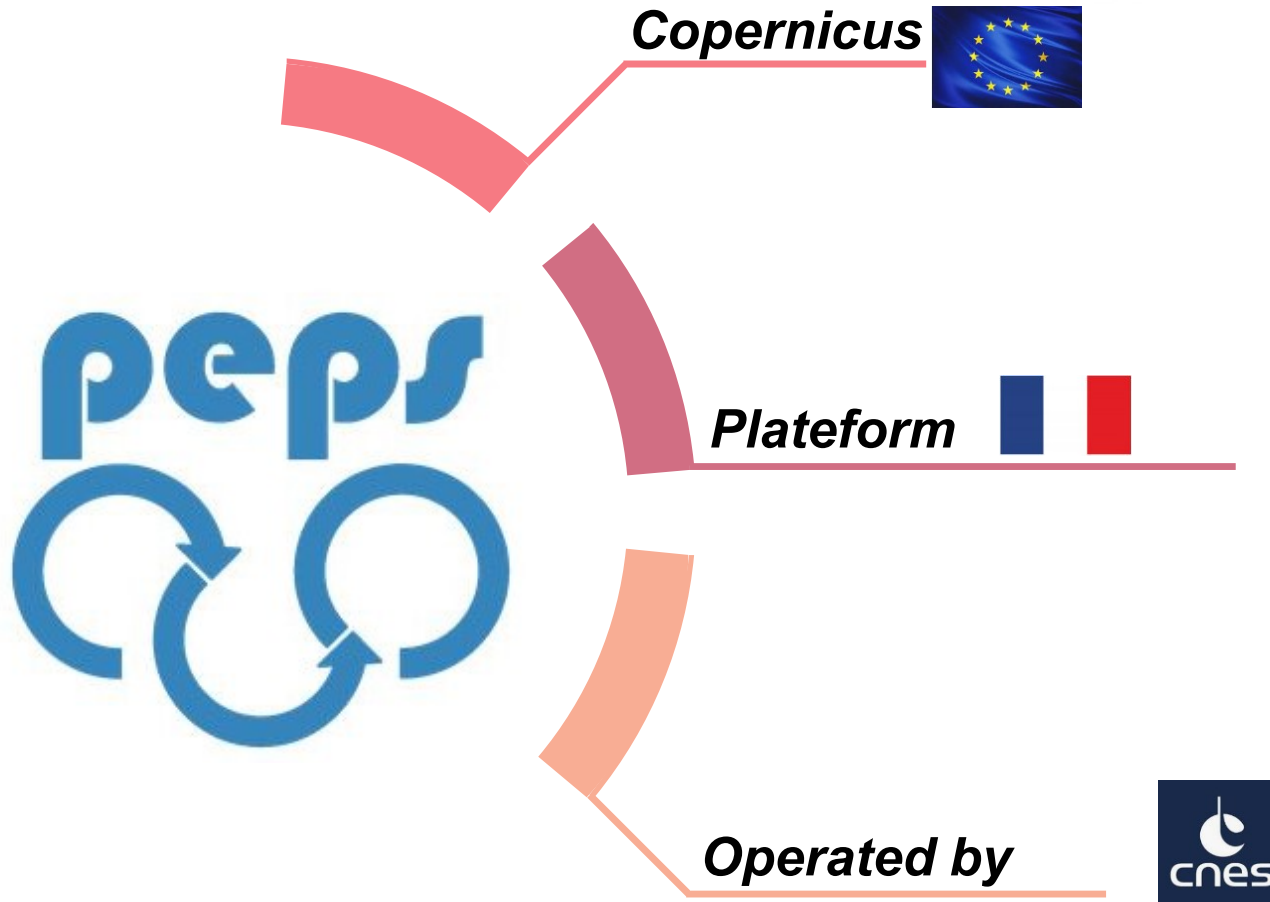
The screenshot shows a web browser displaying the Peps website. The address bar shows the URL <https://peps.cnes.fr/rocket/#/home>. The page features the 'cnes peps' logo on the left and a navigation menu with 'ACCUEIL', 'EXPLORER', 'PEPS-RSS', 'PLUS', 'SE CONNECTER', and 'S'ENREGISTRER'. The main content area displays the 'peps' logo, which consists of the word 'peps' in blue lowercase letters above three circular arrows forming a cycle. Below the logo is the text 'PLATEFORME D'EXPLOITATION DES PRODUITS SENTINEL'. A large banner at the bottom features a satellite-style image of a river with orange highlights. The banner contains the text 'LE TRAITEMENT MAJA EST DISPONIBLE' in large white letters, followed by the message: 'Vous pouvez dès à présent lancer le traitement MAJA sur les produits L1C de votre choix. La description complète est disponible dans votre centre de traitements.'

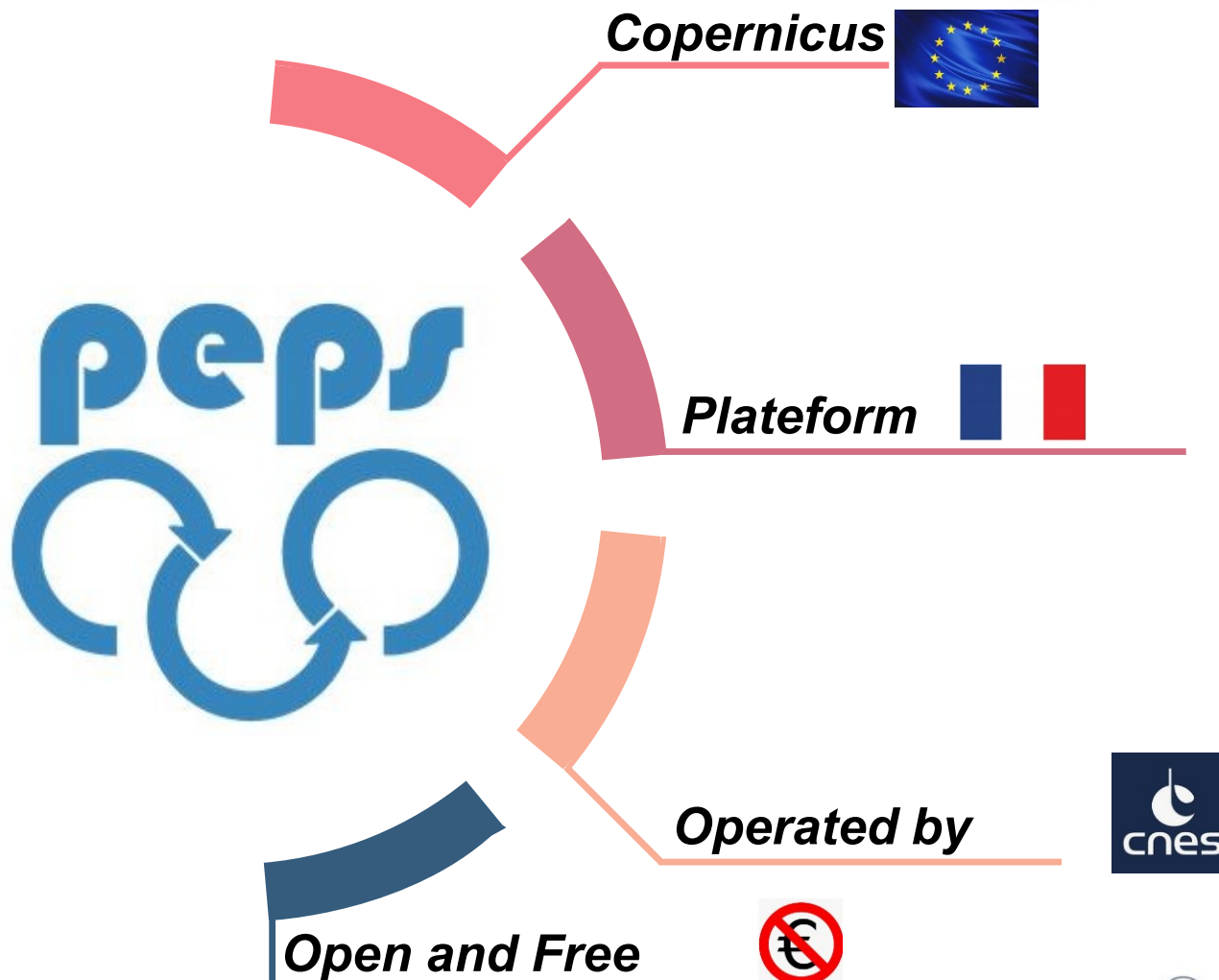


Copernicus









Localisation of our 9083 PEPS users

41 countries with more than 30 PEPS users

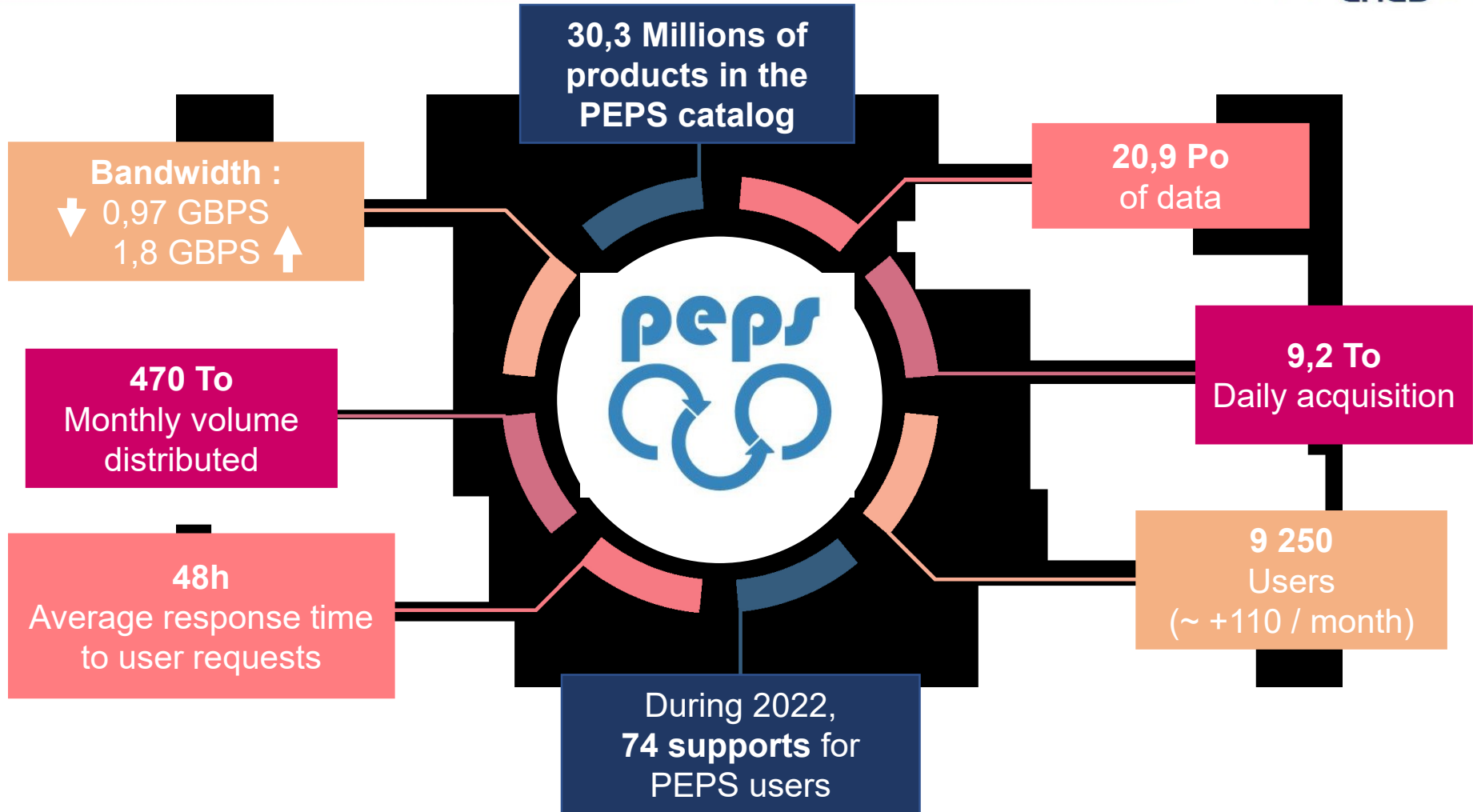
Per continent :

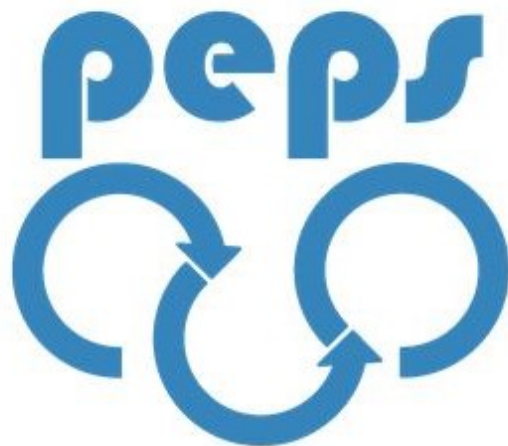
69% Europe
12% Afrique
9% Asie
8% Amériques
1% Océanie

Per countries :

53% France
2,5% USA
2,5% Madagascar
2,4% Italy
2,4% China
2% India
2% Germany
2% GB
1,8% Espagne
1,4% Canada







Copernicus



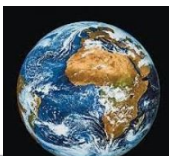
Plateform



Operated by



**Satellite
Data**



Open and free



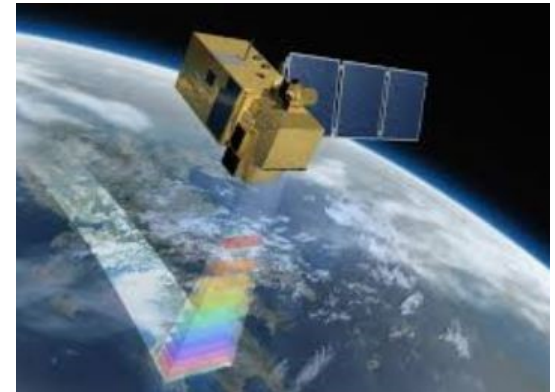
SENTINEL-1:

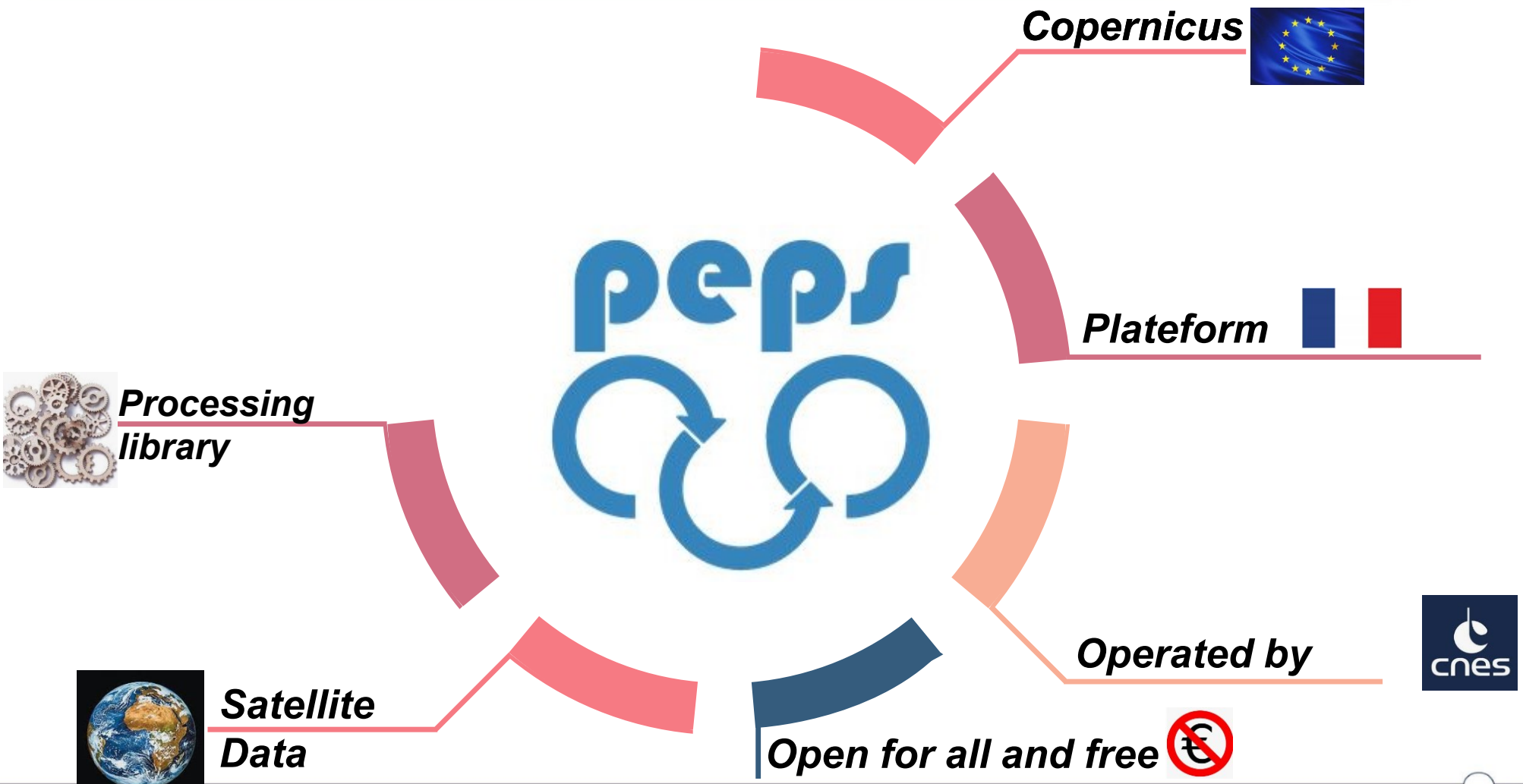
- all products
- since the launch of the satellites
- complete global coverage



SENTINEL-2:

- L1 products
- since the launch of the satellites
- complete global coverage





17 Treatments available on the PEPS platform

Calculation of radiometric index NDVI

Ortho-rectification and tiling of Sentinel-1 GRD products on the Sentinel-2 grid (MGRS)

Metadata extraction

Calculation of radiometric index LAI

MEDICIS (S2 images correlation)

Atmospheric correction of a S2 product (MAJA)

4 color composition treatments

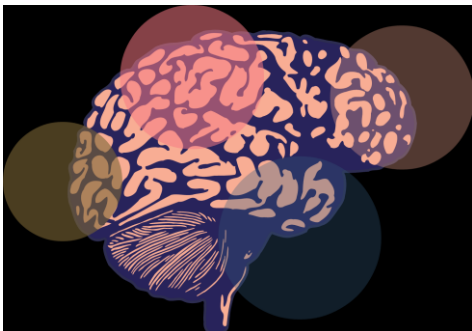
Polarization extraction

Atmospheric correction of a series of S2 images (full-MAJA)

Water mask



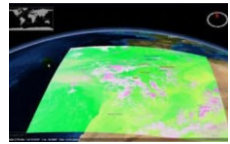
Number of processings launched on the PEPS platform



=> average of **1034** processings launched / month over last year

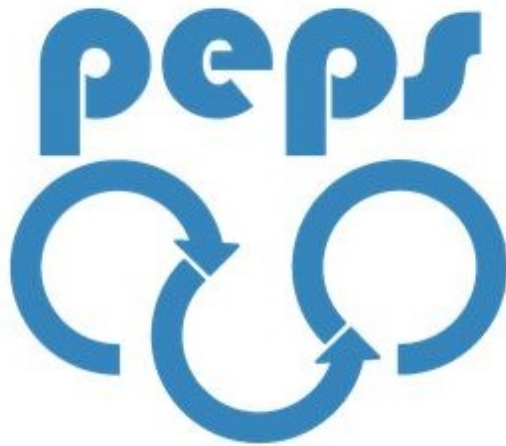
=> **6174 Sentinel images processed** last month (792 processings launched)





Incubator

Copernicus



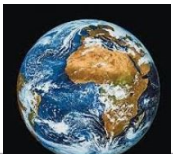
Platform



Processing library



Operated by

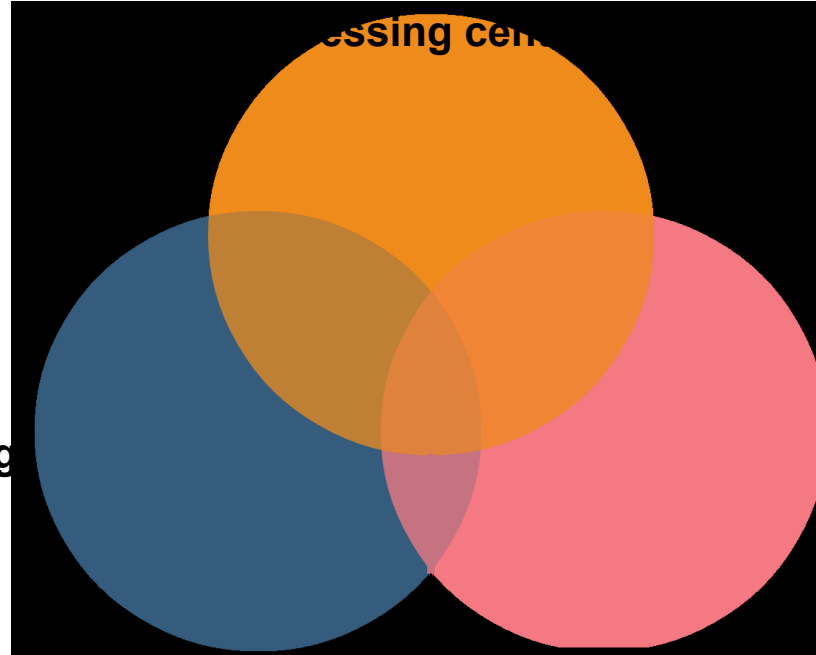


Satellite Data

Open for all and free 



Computing power
of the CNES



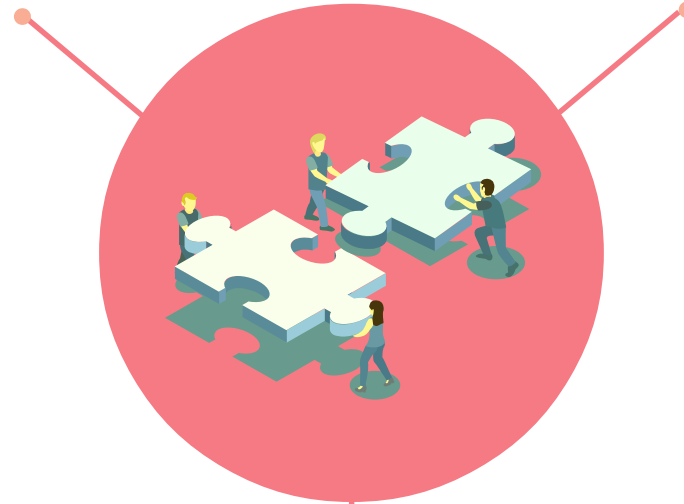
Library of
processing
+
VRE

Near 30 millions
of Sentinel
products

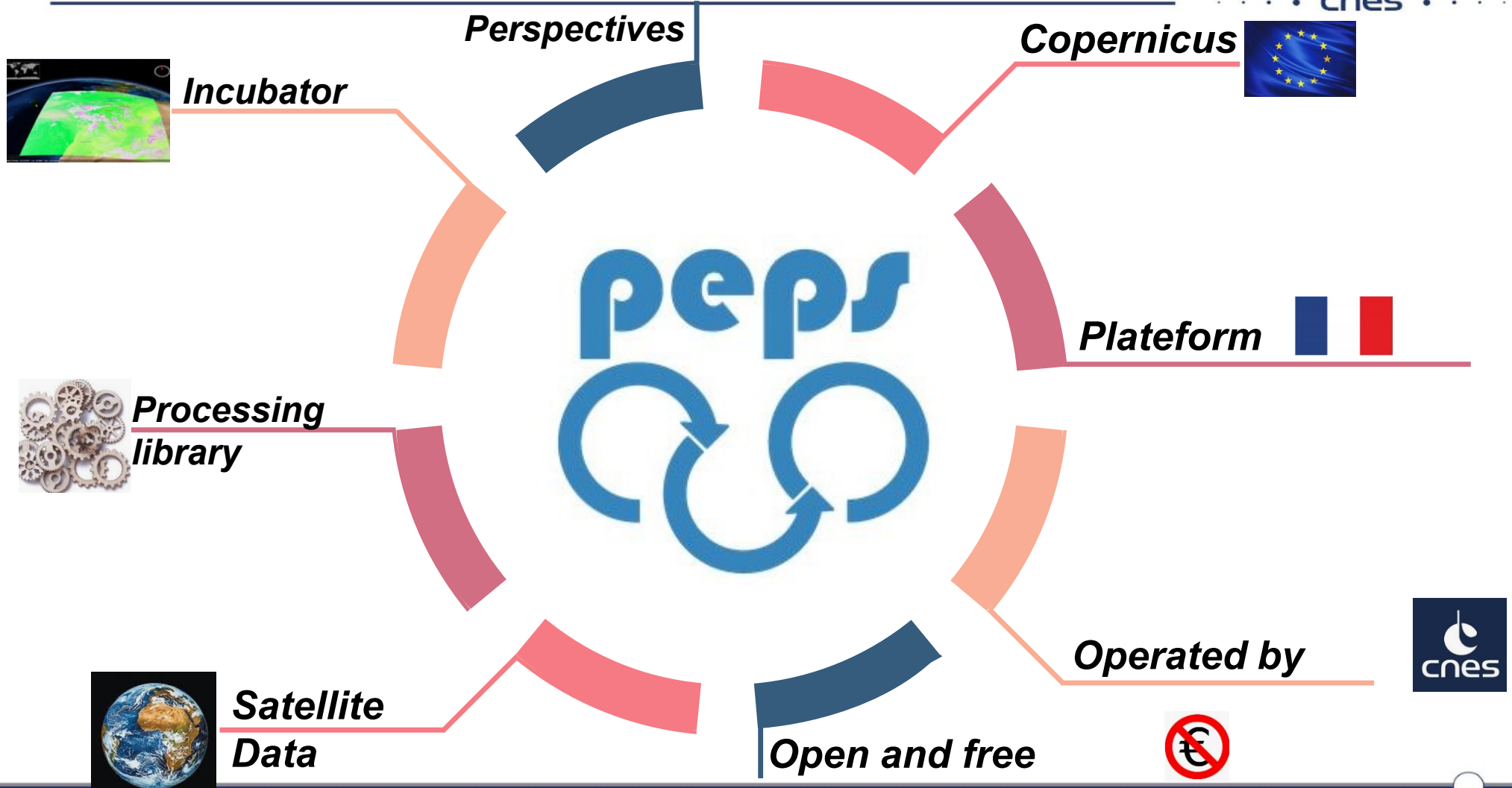


R&D work only
(not operational)

Use of PEPS data (Sentinel)

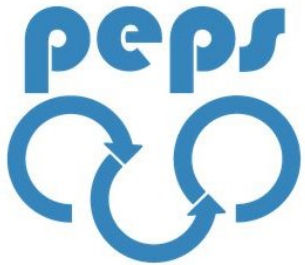


Limited duration
6 months, renewable once, subject to
validation at the progress review



New PEPS architecture

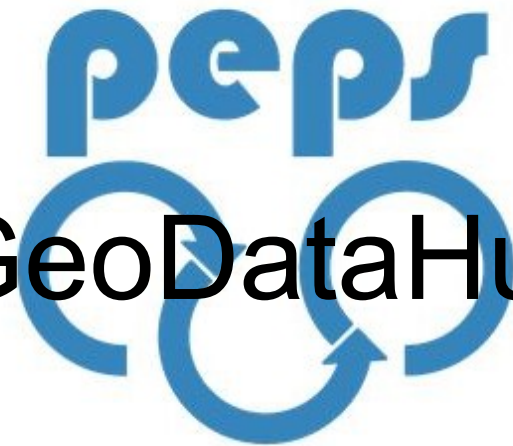
(Implementation of the foundations of a cluster of dematerialized servers that will be shared with other CNES projects)



VRE for PEPS users since a few months

Sentinel 2 reprocessed archive reingestion => questions ?

Facilitation of the PEPS community

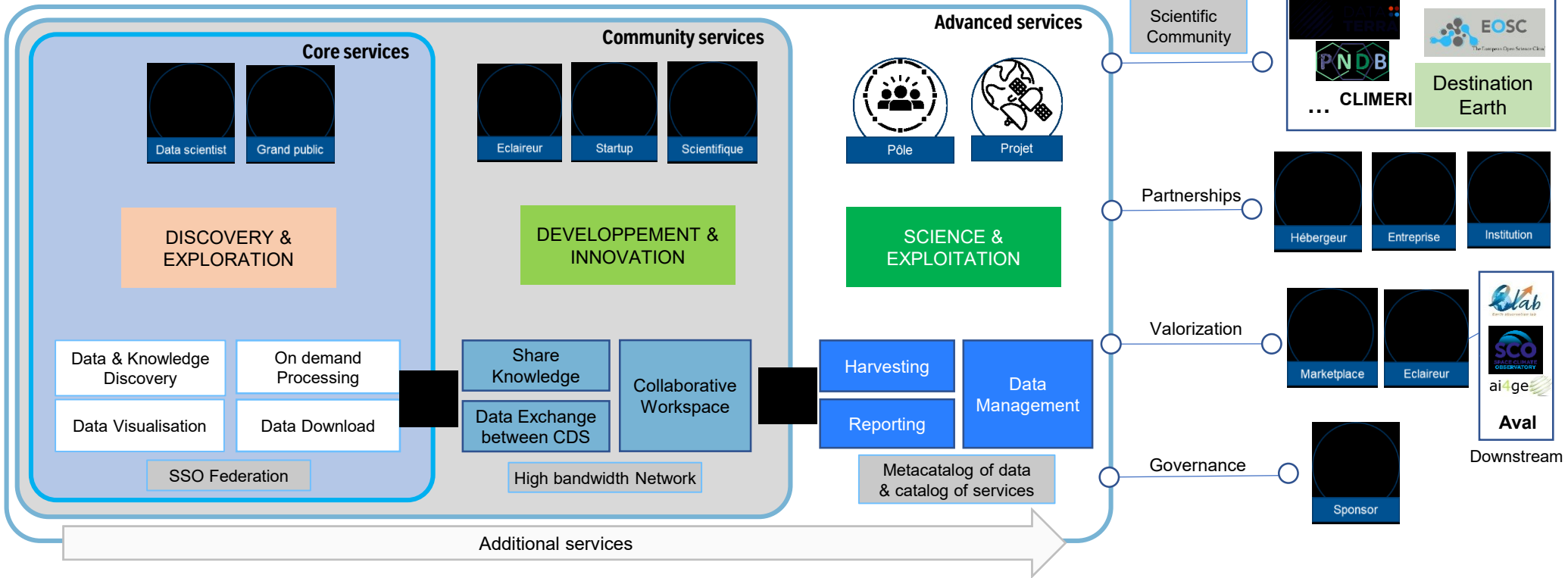


peps
GeoDataHub

GEO DATA HUB – ECOSYSTEM AND SERVICES (SYNTHESIS)



GEO DATA HUB FOR EO SCIENCE & INNOVATION



PEPS data and services will be integrated in GEO Data Hub



Thank you for your attention

Keep in touch

exppeps@cnes.fr

isabelle.soleilhavoup@cnes.fr

richard.moreno@cnes.fr