

COPERNICUS SPACE COMPONENT SENTINEL OPTICAL IMAGING  
MISSION PERFORMANCE CLUSTER SERVICE

**Data Quality Report**

**Sentinel-2 L1C MSI**

**August 2022**

# OPT-MPC

Copernicus Sentinel



Optical Mission Performance Cluster

Ref.: OMPC.CS.DQR.01.07-2022

Issue: 78.0

Date: 29/08/2022

Contract: 4000136252/21/I-BG

|   |  |
|---|--|
| <b>Customer:</b> ESA                    | <b>Document Ref.:</b> OMPC.CS.DQR.01.07-2022 |
| <b>Contract No.:</b> 4000136252/21/I-BG | <b>Date:</b> 29/08/2022                      |
|   | <b>Issue:</b> 78.0                           |

|                        |   |                      |  |
|------------------------|---|----------------------|--|
| <b>Project:</b>        | COPERNICUS SPACE COMPONENT SENTINEL OPTICAL IMAGING MISSION PERFORMANCE CLUSTER SERVICE |                      |  |
| <b>Title:</b>          | Data Quality Report - L1C MSI   |                      |  |
| <b>Author(s):</b>      | S2 MSI ESL team   |                      |  |
| <b>Approved by:</b>    | S. Enache, OPT-MPC MSI ESL Coordinator<br><br>S. Clerc, OPT-MPC Optical ESL Coordinator | <b>Authorized by</b> | J. Jackson, OPT-MPC S2 Technical Manager |
| <b>Distribution:</b>   | ESA, published in Sentinel Online   |                      |  |
| <b>Accepted by ESA</b> | V. Boccia, ESA Deputy TO  |                      | S. Dransfeld, ESA TO                     |
| <b>Filename</b>        | OMPC.CS.DQR.001.07-2022 - i78r0 - MSI L1C DQR August 2022                               |                      |  |

**Disclaimer**

The views expressed herein can in no way be taken to reflect the official opinion of the European Space Agency or the European Union.





## Table of content

|          |   |           |
|----------|---|-----------|
| <b>1</b> | <b>INTRODUCTION .....</b>   | <b>1</b>  |
| 1.1      | SCOPE OF THE DOCUMENT .....   | 1         |
| 1.2      | MAIN POINTS FOR THE REPORTING PERIOD.....                           | 1         |
| <b>2</b> | <b>MEASURED PRODUCT PERFORMANCES .....</b>                          | <b>2</b>  |
| 2.1      | PERFORMANCES OVERVIEW.....  | 2         |
| 2.2      | GEOMETRIC PERFORMANCE.....  | 2         |
| 2.2.1    | <i>Geometric Refinement and Global Reference Image (GRI)</i> .....  | 2         |
| 2.2.2    | <i>Geometric Calibration Status</i> .....                           | 3         |
| 2.2.3    | <i>Absolute Geolocation</i> .....                                   | 3         |
| 2.2.4    | <i>Multi-Spectral Registration</i> .....                            | 6         |
| 2.2.5    | <i>Multi-Temporal Registration</i> .....                            | 7         |
| 2.3      | RADIOMETRIC PERFORMANCE .....                                       | 8         |
| 2.3.1    | <i>Radiometric Calibration Status</i> .....                         | 8         |
| 2.3.2    | <i>Radiometric Uncertainty</i> .....                                | 9         |
| 2.3.3    | <i>Noise</i> .....  | 11        |
| 2.3.4    | <i>Modulation Transfer Function</i> .....                           | 15        |
| <b>3</b> | <b>PROCESSING CHAIN STATUS .....</b>                                | <b>16</b> |
| 3.1      | PRODUCT FORMAT .....  | 16        |
| 3.2      | ACQUISITIONS WITH LOW ILLUMINATION CONDITIONS .....                 | 16        |
| 3.3      | OFF-LINE PRODUCTS.....  | 16        |
| 3.4      | REPROCESSED PRODUCTS .....  | 17        |
| 3.5      | STATUS OF PROCESSING BASELINES AND KNOWN PROCESSING ANOMALIES ..... | 18        |
| 3.6      | PROCESSING BASELINE STATUS.....                                     | 23        |
| 3.6.1    | <i>Processing baseline 03.01</i> .....                              | 23        |
| 3.6.2    | <i>Processing baseline 04.00</i> .....                              | 23        |
| <b>4</b> | <b>PRODUCT ANOMALIES .....</b>                                      | <b>26</b> |
| 4.1      | INTRODUCTION .....  | 26        |
| 4.2      | INSTRUMENT MEASUREMENT TIME METADATA (#4).....                      | 27        |
| 4.3      | MISSING PHYSICAL GAINS METADATA (#7).....                           | 27        |
| 4.4      | STRIPING OF SWIR BANDS (#9).....                                    | 27        |

|      |  |    |
|------|--|----|
| 4.5  | STRIPING DUE TO LOST SOURCE PACKETS (#10) .....          | 28 |
| 4.6  | MISSING VIEWING ANGLES (#11) .....                       | 29 |
| 4.7  | ANOMALOUS PIXELS (#12) .....                             | 29 |
| 4.8  | SATURATION NOISE ON BAND 10 IMAGES (#13) .....           | 30 |
| 4.9  | GEOLOCATION AND CO-REGISTRATION ERROR (#14) .....        | 30 |
| 4.10 | STRONG MISREGISTRATION (#15) .....                       | 31 |
| 4.11 | STRETCHING OF 60 M BANDS (#16) .....                     | 31 |
| 4.12 | MISALIGNED DETECTORS ON BAND 1 (#17) .....               | 31 |
| 4.13 | GEOLOCATION ERROR (#18) .....                            | 32 |
| 4.14 | PRODUCT FOOTPRINT ON THE ANTE-MERIDIEM (#19).....        | 32 |
| 4.15 | DEGRADED AUX FILES (#20).....                            | 33 |
| 4.16 | ACQUISITION WITH SHUTTER CLOSED (#23).....               | 33 |
| 4.17 | IMPRECISE TECHNICAL QUALITY MASK (#24) .....             | 33 |
| 4.18 | GEOLOCATION ERROR ON ORBIT 7174 (#25) .....              | 34 |
| 4.19 | INCOMPLETE MANIFEST (#26) .....                          | 34 |
| 4.20 | INACCURATE FOOTPRINT AND INCOMPLETE METADATA (#27) ..... | 34 |
| 4.21 | INCORRECT CLOUD COVERAGE METADATA (#29) .....            | 34 |
| 4.22 | CORRUPTED METADATA (#30).....                            | 34 |
| 4.23 | MISSING VIEWING ANGLES METADATA (#32).....               | 34 |
| 4.24 | MISSING FILES (#33) .....                                | 34 |
| 4.25 | MISSING ECMWF AUXILIARY FILES (#34).....                 | 34 |
| 4.26 | WRONG QUANTIFICATION VALUE (#35).....                    | 35 |
| 4.27 | MISREGISTRATION ON BANDS 9 AND 10 (#36) .....            | 35 |
| 4.28 | “NULL” FOLDER (#38) .....                                | 35 |
| 4.29 | INCORRECT S2A SPECTRAL RESPONSE FUNCTION (#39) .....     | 35 |
| 4.30 | INCORRECT PRODUCT NAME (#40) .....                       | 36 |
| 4.31 | INCORRECT NODATA MASK FORMAT (#42) .....                 | 36 |
| 4.32 | GEOLOCATION ERROR DUE TO GPS ANOMALY (#43).....          | 36 |
| 4.33 | INCORRECT CLOUD COVERAGE PERCENTAGE (#44) .....          | 36 |
| 4.34 | PIXELS WITH 0 VALUE (#5) .....                           | 37 |
| 4.35 | INCORRECT EQUALIZATION (#45) .....                       | 38 |

|          |   |           |
|----------|---|-----------|
| 4.36     | MISSING CORNERS (#46).....  | 38        |
| 4.37     | S2A PRODUCTS PROCESSED AS S2B (#47) .....                                   | 38        |
| 4.38     | GEOLOCATION ERROR AFTER ORBIT CONTROL MANOEUVRE (#48) .....                 | 38        |
| 4.39     | MISREGISTRATION OF SOME S2A PRODUCTS (#49) .....                            | 39        |
| 4.40     | COLLISION AVOIDANCE MANOEUVRE: MISSING PIXELS (#50) .....                   | 39        |
| 4.41     | COLLISION AVOIDANCE MANOEUVRE: MAJOR GEOLOCATION ERROR (#51) .....          | 39        |
| 4.42     | CORRUPTED FOOTPRINT (#52).....  | 40        |
| 4.43     | MISSING AUX ECMWF FILES (#53) .....   | 40        |
| 4.44     | EMPTY AUX ECMWF FILES (#54) .....   | 40        |
| 4.45     | SPURIOUS VIEWING ANGLE METADATA (#64).....                                  | 40        |
| 4.46     | PLATFORM MISMATCH (#67).....  | 40        |
| 4.47     | GEOLOCATION AND MIS-REGISTRATION DUE TO INCORRECT CONFIGURATION (#68) ..... | 40        |
| 4.48     | PRODUCTS WITH INCORRECT CHECKSUM (#69) .....                                | 40        |
| 4.49     | ZERO SOLAR IRRADIANCE (#70).....  | 40        |
| 4.50     | PRODUCTS WITH LARGE MISREGISTRATION FOLLOWING MISSING PACKETS (#71).....    | 41        |
| 4.51     | CORRUPTED ECMWF AUXILIARY FILES (#72) .....                                 | 41        |
| 4.52     | INCONSISTENT DATA LOSS REPORT.....  | 41        |
| <b>5</b> | <b>PIXELS STATUS .....</b>  | <b>42</b> |
| 5.1      | DEFECTIVE PIXELS .....  | 42        |
| 5.1.1    | S2A .....   | 42        |
| 5.1.2    | S2B.....  | 43        |
| 5.2      | RESET SPIKE PIXELS .....  | 43        |
| <b>6</b> | <b>PRODUCT FEATURES .....</b>   | <b>46</b> |
| 6.1      | SPECTRAL RESPONSE NON-UNIFORMITY.....                                       | 46        |
| 6.2      | PARALLAX EFFECTS.....   | 46        |
| 6.2.1    | <i>Surface reflectance effects .....</i>                                    | <i>47</i> |
| 6.2.2    | <i>Misregistration of High Altitude Objects.....</i>                        | <i>47</i> |
| 6.3      | GRADIENT CROSS-TALK .....   | 48        |
| 6.4      | DATA-STRIP OVERLAP .....  | 49        |
| 6.5      | VALID PIXELS.....   | 49        |

|   |  |  |
|---|--|--|
|  <p><b>OPT-MPC</b><br/>Copernicus Sentinel<br/>Optical Mission Performance Cluster</p> | <p style="text-align: center;"><b>Optical MPC</b></p> <p style="text-align: center;"><b>Data Quality Report – Sentinel-2 L1C MSI</b></p> <p style="text-align: center;"><b>August 2022</b></p> | <p>Ref.: OMPC.CS.DQR.01.07-2022<br/>Issue: 78.0<br/>Date: 29/08/2022<br/>Page: vii</p> |
|---|--|--|

## List of Figures

|  |    |
|--|----|
| Figure 1: Absolute geolocation performance for unrefined products. ....  | 4  |
| Figure 2: Number of refined and unrefined datastrips per five days period. ....  | 4  |
| Figure 3 : Location of datastrips in fall-back over a cycle period in March 2022 (2022-03-18 – 2022-03-28) for S2A (red datastrips) and S2B (blue datastrips).....   | 5  |
| Figure 4: Absolute geolocation performance for refined products.....   | 5  |
| Figure 5: Localisation and illustration of the Karakum desert site (Tile 40TGK).....   | 6  |
| Figure 6: Multi-temporal 2D co-registration errors for refined S2A (left) and S2B pairs (right), and all pairs (bottom) on 07/2022. The 95.45% performance is <5 m. ....   | 7  |
| Figure 7: Histogram of the multi-temporal performance for all products (refined and unrefined) – 07/2022 .....   | 8  |
| Figure 8: Comparison of radiometric accuracy for all spectral bands (except B09 and B10): ratio of S2A measurement on reference. Error bars indicate the method uncertainty.....   | 9  |
| Figure 9: Comparison of radiometric accuracy for all spectral bands (except B09 & B10): ratio of S2B measurement on reference. Error bars indicate the method uncertainty.....   | 10 |
| Figure 10 : Inter-calibration ratio between S2A and S2B in function of the wavelength assessed based on acquisition from July (left). Reflectance indicator for all wavebands in the VNIR showing an alignment                   | 10 |
| Figure 11: Evolution of the SNR performances based on diffuser acquisitions for S2A from 06/05/2019 to 09/05/2022 (top)and S2B from 22/05/2019 to 18/04/2022 (bottom) .....  | 12 |
| Figure 12 : Evolution of the SNR performances based on homogeneous natural acquisitions.....   | 13 |
| Figure 13: Fixed Pattern Noise (residual error after equalization) measured on diffuser images for S2A (top) and S2B (bottom). Blue curve: min FPN, marron: mean, green: 98 percentile, red: specified value. ....               | 14 |
| Figure 14 : Fixed Pattern Noise (residual error after equalization) measured on homogeneous natural images for S2A (left) and S2B (right). Blue curve: mean FPN, grey curve: Q95.45 percentile, red curve: specified value. .... | 14 |
| Figure 15: MTF performance assessments for S2A (top) and S2B (bottom) performed using products from 2021. Blue curve: ACT MTF, green: ALT MTF, grey: specified value. ....   | 15 |
| Figure 16: CLASSI mask – layer 1 (blue) cloud mask and layer 3 (pink) snow mask. ....  | 23 |
| Figure 17: Striping of SWIR bands (anomaly #9). Top: B11, Bottom, B12. ....  | 27 |
| Figure 18: L1C product affected by a large number of missing packets. ....   | 28 |
| Figure 19: Anomalous pixels on band B4 (anomaly #12). ....   | 29 |
| Figure 20: Along-track noise pattern on B10 images over bright clouds (#13). ....  | 30 |

|   |   |   |
|---|---|---|
|  | <b>Optical MPC</b><br><b>Data Quality Report – Sentinel-2 L1C MSI</b><br><b>August 2022</b> | Ref.: OMPC.CS.DQR.01.07-2022<br>Issue: 78.0<br>Date: 29/08/2022<br>Page: viii |
|---|---|---|

Figure 21: Spectral co-registration error (anomaly #14). ----- 30

Figure 22: Stretching of 60 m bands (anomaly #16).----- 31

Figure 23: Detector misalignment on band B1 (anomaly #17). ----- 32

Figure 24: S2 image superimposed with reference map, showing a geolocation error of 35 m (anomaly #18).----- 32

Figure 25: Technical Quality masks (green: lost packets, red: degraded packets) overlaid over an affected image. A small gap exists between the mask and the affected area (anomaly #24). ----- 33

Figure 26: Spectral Response Functions for bands B01 and B02.----- 35

Figure 27: Tile 40UGE acquired on 12/06/2018 by S2B. Left: RGB composite, Right: cloud mask (in red). The cloud coverage percentage is incorrectly reported as 19.3% (anomaly #44). ----- 37

Figure 28: Pixels with 0 value (No Data) shown here as transparent, in a dark area of a B12 image (Anomaly #5). ----- 37

Figure 29: Incorrect equalization of B10 for S2A (anomaly #45).----- 38

Figure 30: Top-right corner of the image of the same L1C tile ----- 38

Figure 31: Spectral misregistration (anomaly #49). Affected S2A products (between 04/02/2019 and 14/02/2019) have been removed from the archive and reprocessed.----- 39

Figure 32: Along-track stripe on B11 image----- 43

Figure 33: Along-track stripes resulting from spectral response non-uniformity (band B03).----- 46

Figure 34: Stripe pattern over sea surface ----- 47

Figure 35: Spectral misregistration and detector misalignment for object at high altitude (plane and contrail). This feature is not an anomaly.----- 48

Figure 36: Gradient cross-talk on band B12 (highly enhanced contrast).----- 48

Figure 37: Example of a pair of products at the overlap between two data-strips. a: product from the first data-strip, processed at Svalbard (SGS) b: product from the second data-strip, processed at Matera (MTI). c: the two products overlap seamlessly to reconstruct the complete acquisition. d: close-up near the transition line. ----- 49



## List of Tables

|  |    |
|--|----|
| Table 2-1: Summary of Sentinel-2 L1C products measured performances for mission key requirements.  | 2  |
| Table 2-2: Multi-Spectral co-registration performance (per band couple and detector number)-----   | 6  |
| Table 2-3: Best estimate of S2A and S2B calibration gains from validation -----  | 11 |
| Table 2-4: Estimated SNR performance for S2A and S2B at reference radiance based on diffuser acquisitions.-----  | 12 |
| Table 2-5: S2A and S2B MTF performance assessments performed using products from 2021. -----   | 15 |
| Table 3-1: Summary of identified processing anomalies and associated processing baselines. Red: systematic anomaly. Orange: random anomaly affecting only a few products ----- | 18 |
| Table 3-2: Correspondence table between CAMS variable name and physical parameter name. -----  | 24 |
| Table 4-1: On-board Anomalies. -----   | 26 |
| Table 4-2: List of orbits affected by anomaly #9. -----  | 28 |
| Table 5-1: Defective pixels on S2A-----  | 42 |
| Table 5-2: Defective pixels on S2B band 12. -----  | 43 |
| Table 5-3: S2A Pixel affected by reset spike noise.-----   | 44 |
| Table 5-4: S2B Pixel affected by reset spike noise.-----   | 44 |

|  |  |   |
|--|--|---|
|  | <p><b>Optical MPC</b></p> <p><b>Data Quality Report – Sentinel-2 L1C MSI</b></p> <p><b>August 2022</b></p> | <p>Ref.: OMPC.CS.DQR.01.07-2022</p> <p>Issue: 78.0</p> <p>Date: 29/08/2022</p> <p>Page: 1</p> |
|--|--|---|

# 1 Introduction

## 1.1 Scope of the document

---

This document provides the data quality status of Copernicus Sentinel-2 mission L1C products.

It documents:

- ❖ the measured product performance vs. specifications (Section 2),
- ❖ processing chain improvements associated to each Processing Baseline (Section 3),
- ❖ an overview on L1C product evolution (Section 3.6),
- ❖ observed anomalies and known issues (Section 4),
- ❖ the list of defective pixels (Section 5.1).

Note that a reference article provides an in-depth presentation of Sentinel-2 Calibration and Validation methods and results after one year in operation (F. Gascon *et al.*, "[Copernicus Sentinel-2 Calibration and Products Validation Status](#)", RSE, 2017).

Since May 2018, a Data Quality Report for Level 2A products is also available from the [Sentinel-2 Document Library](#).

## 1.2 Main points for the Reporting Period

---

- ❖ New results for the geometric performances.

## 2 Measured Product Performances

### 2.1 Performances Overview

The following overview table provides a summary of the Level-1C products data quality performances measured on products in Processing Baselines 02.01 and higher, for a set of key mission requirements. Similar performances are observed for both S2A and S2B satellites.

**Table 2-1: Summary of Sentinel-2 L1C products measured performances for mission key requirements.**

| Requirement                             | Description  | Measured performance                            |
|---|--|---|
| <b>Absolute geolocation</b>             | The geo-location uncertainty shall be better than 20 m at 2 $\sigma$ confidence level (unrefined products)   | < 11 m at 95.5% confidence (unrefined products) |
| <b>Multi-temporal registration</b>      | The spatial co-registration accuracy of Level 1c data acquired at different dates over the same geographical area shall be better than or equal to 0.3 SSD at 2 $\sigma$ confidence level.         | < 5 m at 95.5% confidence (refined products)    |
| <b>Multi-spectral registration</b>      | The inter-channel spatial co-registration of any two spectral bands shall be better than 0.30 of the coarser achieved spatial sampling distance of these two bands at 3 $\sigma$ confidence level. | < 0.3 pixel at 99.7% confidence                 |
| <b>Absolute radiometric uncertainty</b> | The absolute radiometric uncertainty shall be better than 5 % (goal 3%). (see Table 2-3 in this document)  | B1 to B12, excl. B10: < 3%±2%                   |
| <b>SNR</b>                              | The Signal-to-Noise Ratio (SNR) shall be higher than specified values (see Table 2-4 in this document)   | All bands compliant with > 27% margin           |

Measured performances are detailed in the following sections.

### 2.2 Geometric Performance

#### 2.2.1 Geometric Refinement and Global Reference Image (GRI)

Since 30/03/2021 (processing Baseline 03.00) a geometric refinement step is used to improve the multi-temporal geolocation performance. Thanks to this processing, the performance of refined products is notably different from that of unrefined products.

In a first step, the geometric refinement has been applied over Europe and Africa (see section 3.6.1 for details). Since 23/08/2021, the geometric refinement is applied globally (except Antarctica).

|  |   |  |
|--|---|--|
|  | <b>Optical MPC</b><br><b>Data Quality Report – Sentinel-2 L1C MSI</b><br><b>August 2022</b> | Ref.: OMPC.CS.DQR.01.07-2022<br>Issue: 78.0<br>Date: 29/08/2022<br>Page: 3 |
|--|---|--|

The geometric refinement relies on the Sentinel-2 Global Reference Image (GRI). The GRI is a set of Level 1B images (in sensor frame) covering the whole globe with highly accurate geolocation information obtained through a spatio-triangulation algorithm using reference Ground Control Points. The images use the reference band (B04) and are mostly (but not entirely) cloud-free. The GRI is an internal database used only for processing and not for dissemination. In particular, the GRI is not meant to be a cloud-free mosaic of the globe. Thanks to the geometric refinement, all refined products inherit the same absolute geolocation performance.

With PB 03.00, a new Digital Elevation Model (DEM), the Copernicus DEM, is used to orthorectify the L1C products. This improves the local geolocation for all products in mountainous areas. This applies also to unrefined products, although the improvement is more effective for refined products.

Preliminary validation results indicate the following performances for the refined products:

- ❖ Absolute geolocation: better than 6 m
- ❖ Multi-temporal co-registration (same or different satellites), same repeat orbit: better than 5 m at 95% confidence
- ❖ Multi-temporal co-registration, different repeat orbits: better than 5 m.

The geometric calibration status reported in the section 2.2.2 concerns only the unrefined products.

## 2.2.2 Geometric Calibration Status

### 2.2.2.1 S2A

An improvement of the yaw angle bias correction was performed on May 30<sup>th</sup> 2016. Before this date, a relatively large along-track bias can be observed between different repeat orbits in the overlap region at the edges of the swath. The multi-temporal co-registration performance reported in this document is computed for products acquired after this date.

The geometric calibration of S2A has been updated on 10/01/2019. After a temporary degradation in June 2021, the geolocation performance of unrefined S2A products is again nominal.

### 2.2.2.2 S2B

A new geometric calibration has been deployed on January 3<sup>rd</sup> 2022 to improve the geolocation of non-refined products.

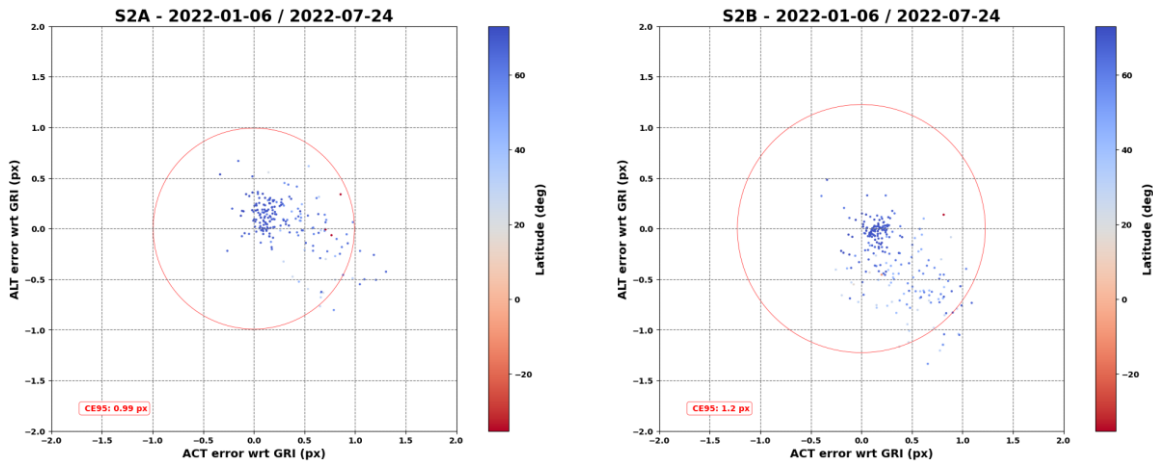
Refined products (PB 03.00 and higher) have reduced geolocation bias compared to non-refined product. In addition, the refinement corrects any biases between S2A and S2B refined products.

## 2.2.3 Absolute Geolocation

### 2.2.3.1 Unrefined products

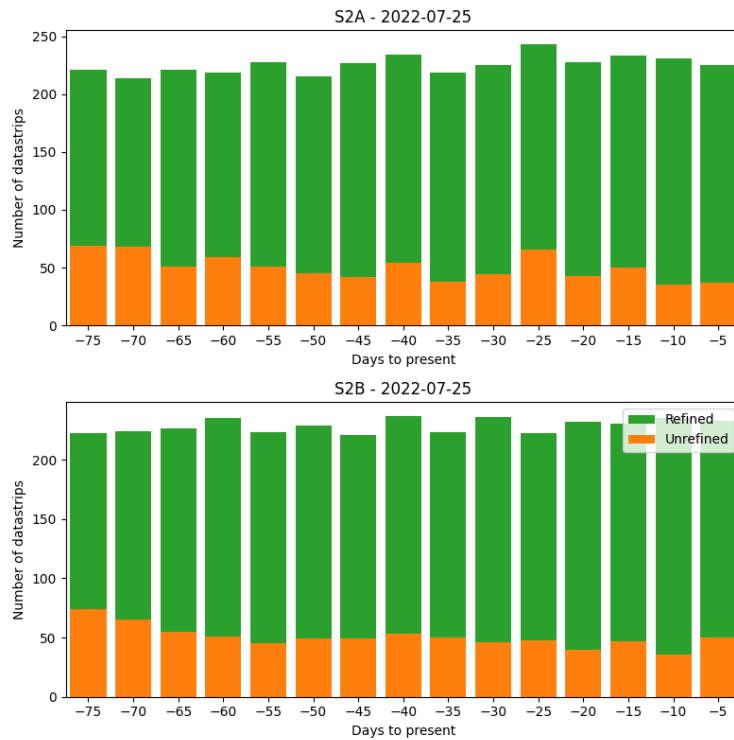
The long-term performance for unrefined products is close to 10 m at 95% for S2A and close to 12 m for S2B. Since the activation of the global refinement in August 2021, the performance is estimated on a limited set of unrefined products.

Figure 1 shows the absolute geolocation performance for the unrefined products relative to the Sentinel-2 GRI. The real absolute performance is expected to be a little worse due to the GRI absolute geolocation uncertainty (6 m). For S2A, a stabilization of ACT and ALT error with regards to the GRI is observed. For S2B, an improvement of the ACT bias is observed, and the ALT bias is around -5 m for the last two months.



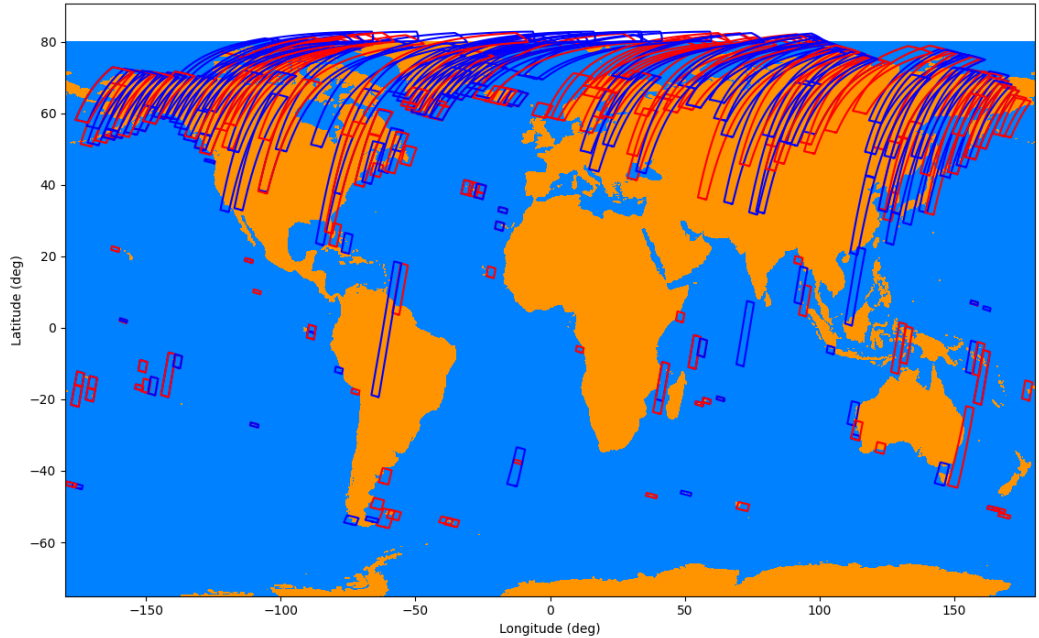
**Figure 1: Absolute geolocation performance for unrefined products.**  
**Left: S2A, Right: S2B (06.01.2022 – 24.07.2022)**

Figure 2 provides the rate of unrefined products for S2A and S2B. A decrease of the fall-back rate (number of unrefined products) can be observed. This decrease is due to the reduction of the cloud cover.



**Figure 2: Number of refined and unrefined datastrips per five days period.**

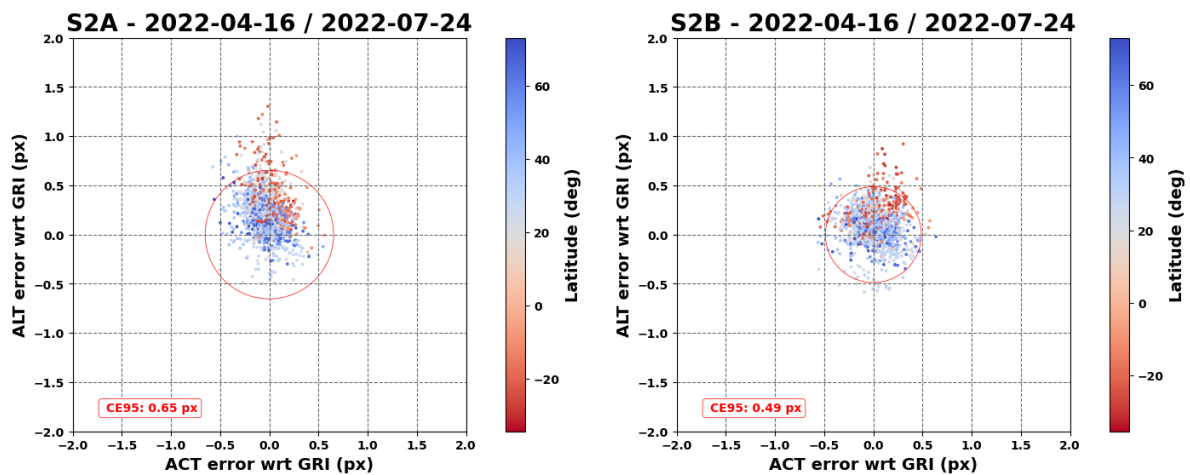
The following map provides the location of the datastrips in fall-back for a cycle period during March 2022. Most of the times these datastrips in fall-back are over snowy or cloudy areas, coasts and islands.



**Figure 3 : Location of datastrips in fall-back over a cycle period in March 2022 (2022-03-18 – 2022-03-28) for S2A (red datastrips) and S2B (blue datastrips)**

### 2.2.3.2 Refined products

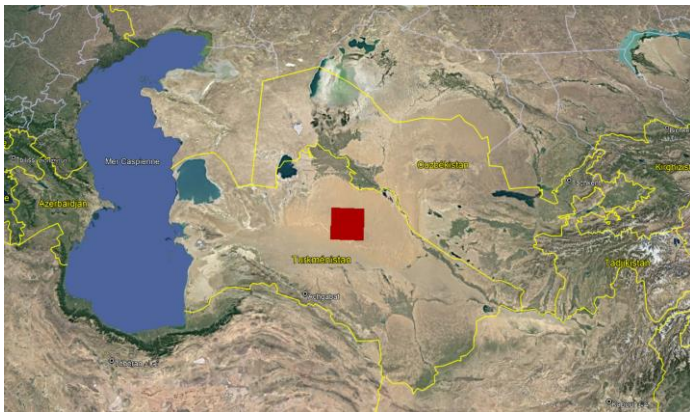
Absolute geolocation estimations for refined products relative to the Sentinel-2 GRI show a stable performance for both S2A and S2B with an absolute geolocation error better than 6.5 m for S2A and 4.9 m for S2B (at 95% confidence). Please note that, as for the unrefined products, the real absolute performance is expected to be a little worse due to the GRI absolute geolocation uncertainty (6 m).



**Figure 4: Absolute geolocation performance for refined products. Left: S2A, Right: S2B (16.04.2022 – 24.07.2022)**

## 2.2.4 Multi-Spectral Registration

The multi-spectral evaluation is performed over refined and unrefined Level-1C products acquired over suitable validation sites (flat terrain with good appropriate texture and spectral characteristics). The co-registration requirement ( $< 0.3$  pixel at 99.7% confidence) for both S2A and S2B are met for almost all measured band couples. The results with regards to the pair B09/B01 are affected by a low correlation between the spectral bands.



**Figure 5: Localisation and illustration of the Karakum desert site (Tile 40TGK) used to perform the inter-band co-registration measurements**

**Table 2-2: Multi-Spectral co-registration performance (per band couple and detector number) for S2A (top) and S2B (bottom).**

| <b>S2A</b> |       |       |       |       |       |       |       |       |       |
|------------|-------|-------|-------|-------|-------|-------|-------|-------|-------|
| Bsec/Bref  | B02   | B03   | B06   | B07   | B08   | B09   | B11   | B12   | B8A   |
| B01        |       |       |       |       |       | 0.350 |       |       |       |
| B04        | 0.294 | 0.255 |       |       | 0.295 |       |       |       |       |
| B05        |       |       | 0.151 | 0.160 |       |       | 0.318 | 0.310 | 0.193 |
| B11        |       |       |       |       |       |       |       | 0.167 |       |

| <b>S2B</b> |       |       |       |       |       |     |       |       |       |
|------------|-------|-------|-------|-------|-------|-----|-------|-------|-------|
| Bsec/Bref  | B02   | B03   | B06   | B07   | B08   | B09 | B11   | B12   | B8A   |
| B01        |       |       |       |       |       | nan |       |       |       |
| B04        | 0.398 | 0.285 |       |       | 0.203 |     |       |       |       |
| B05        |       |       | 0.108 | 0.128 |       |     | 0.376 | 0.384 | 0.161 |
| B11        |       |       |       |       |       |     |       | 0.223 |       |

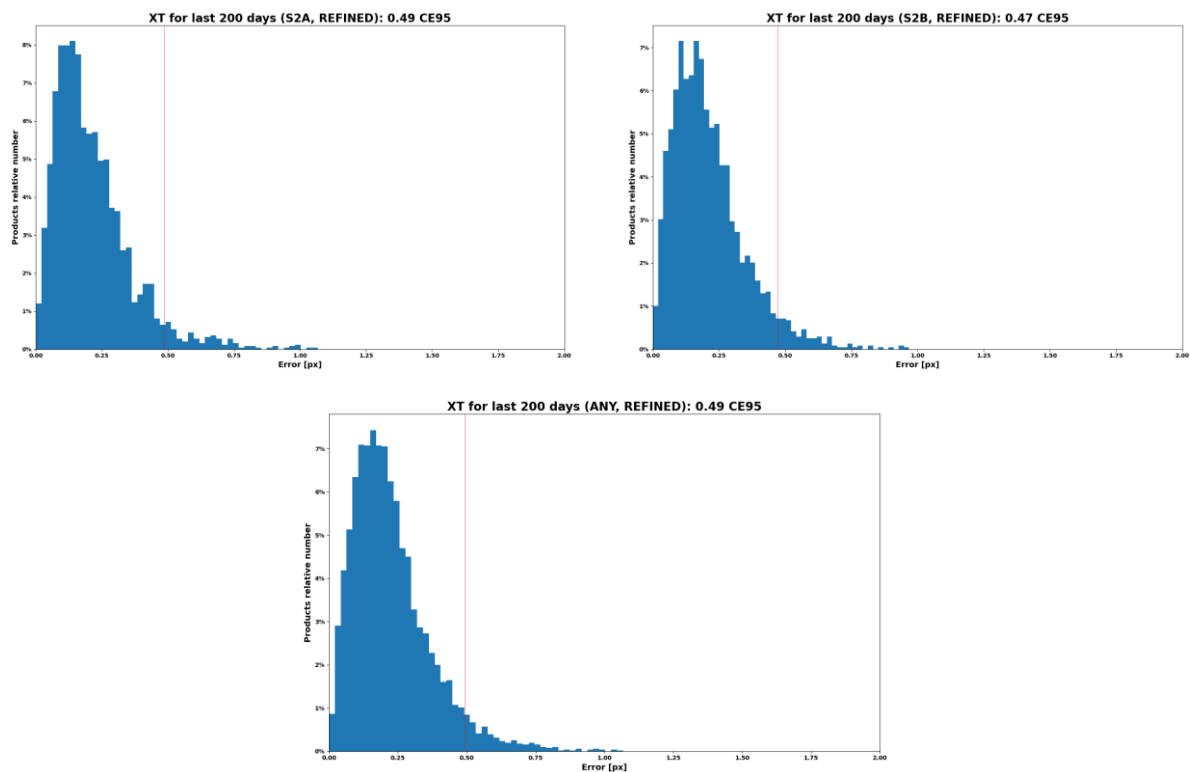
## 2.2.5 Multi-Temporal Registration

### 2.2.5.1 Methodology

The multi-temporal registration error for one tile is estimated as the mean measured error for all control points of the tile. Then the global performance is taken as the 95.5% percentile of the mean shift for all tiles. The performance is measured on the reference band (B04).

### 2.2.5.2 Refined products

Figure 6 below shows the histograms of the co-registration for pairs of S2A, S2B and any S2A/S2B products. The performance for all cases is less than 0.5 pixels at 95.45%.

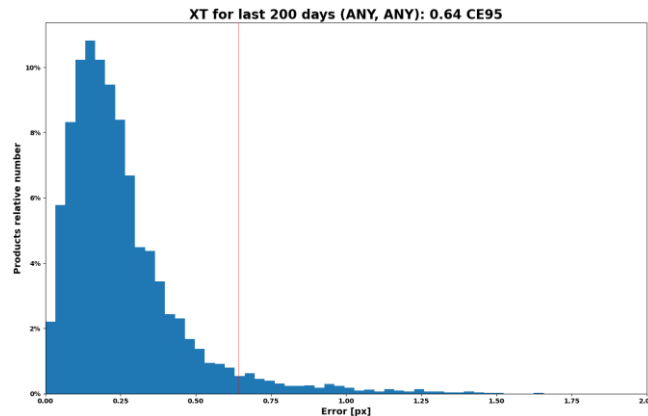


**Figure 6: Multi-temporal 2D co-registration errors for refined S2A (left) and S2B pairs (right), and all pairs (bottom) on 07/2022. The 95.45% performance is <5 m.**



### 2.2.5.3 All products

The following figure provides the multi-temporal performance for all products, whether refined or unrefined. The performance drops to 0.64 pixels.



**Figure 7: Histogram of the multi-temporal performance for all products (refined and unrefined) – 07/2022**

## 2.3 Radiometric Performance

### 2.3.1 Radiometric Calibration Status

#### 2.3.1.1 Sun-diffuser model improvement

Product baseline 02.06 has been deployed on 23/10/2017. With this new baseline, the Sun-diffuser model used for calibration has been improved to reduce seasonal effects. The update did not result in a discrepancy in the time series of the radiometry (impact on calibration lower than 0.2% at this time of year, see DQR issue 22 for details).

#### 2.3.1.2 S2A

Radiometric calibrations are performed routinely at the beginning of each month. Decontamination operations are scheduled once a year.

A decontamination of the instrument was performed on the 8<sup>th</sup> – 9<sup>th</sup> of November 2021. The calibration coefficients were updated on the 16<sup>th</sup> of November.

#### 2.3.1.3 S2B

Radiometric calibration is performed once per month. The calibration of 12/12/2019 includes an update of the B02 relative spectral response as described for S2A in the previous section.

A decontamination was performed on 13<sup>th</sup> – 14<sup>th</sup> December 2021. The post-decontamination radiometric calibration was implemented on 21/12/2021.

With the introduction of the baseline 04.00 on 25<sup>th</sup> January 2022, a radiometric harmonization between Sentinel-2A and Sentinel-2B (keeping Sentinel-2A as reference) was introduced (see section

3.6.2 for more details). Indeed, among the evolution of this baseline the mitigation of the radiometric differences between both satellites was set by applying a radiometric bias correction of 1.1 % to Sentinel-2B VNIR bands B01 to B09.

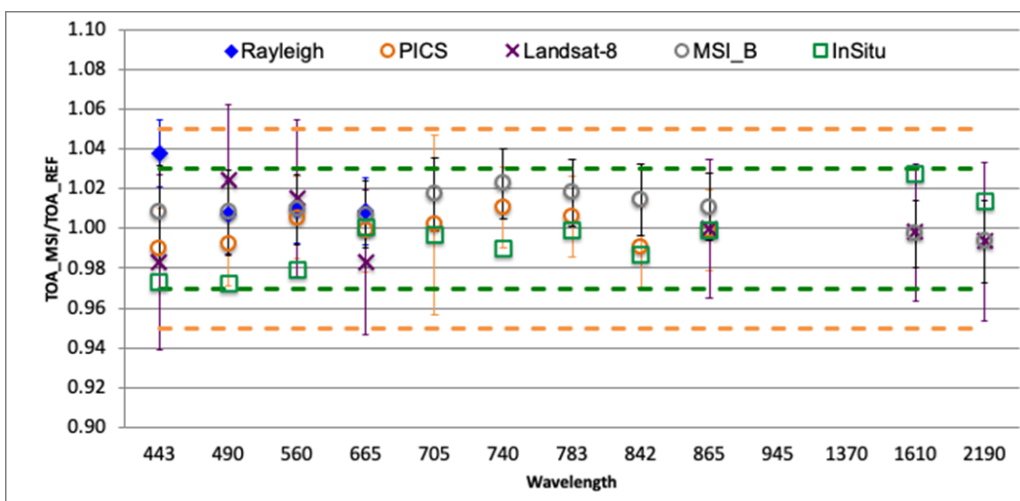
The harmonization was effective from 09:00 UTC. The first Sentinel-2B sensing using the updated GIPP R2ABCA was: 20220125T073939.

### 2.3.2 Radiometric Uncertainty

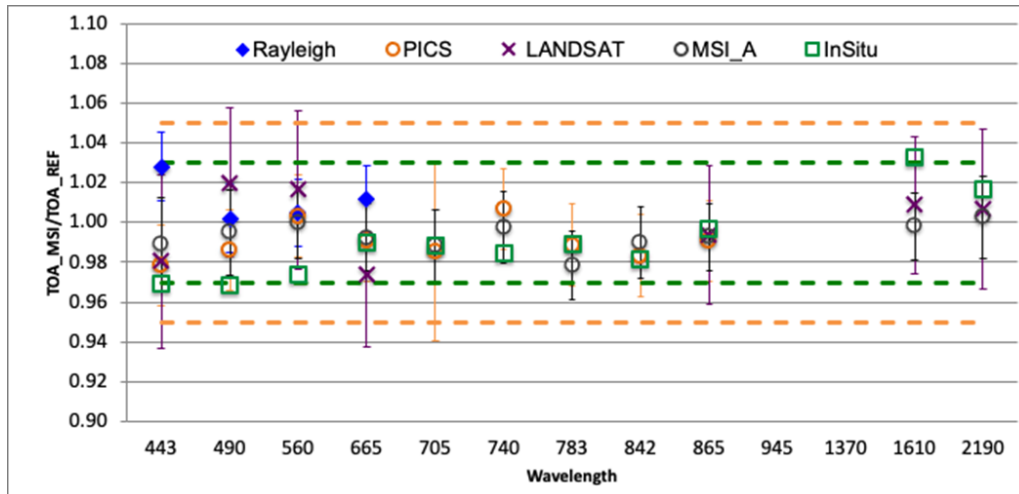
Radiometric validation is performed using several methods:

- ❖ “Rayleigh” method: measurement of the Rayleigh atmospheric backscattering over deep ocean sites.
- ❖ Comparison with in-situ data.
- ❖ Measurement over well characterized, temporally stable desert areas (Pseudo-Invariant Calibration Sites or PICS).
- ❖ Comparison with other sensors such as Landsat-8 OLI (Collection-1 over Libya-4) and cross-comparison S2A vs S2B.
- ❖ The DCC method for relative radiometric assessments. Because DCC are high-altitude targets, they are less dependent on an estimation of the radiative transfer through the atmosphere.

The radiometric validation results based on different methods are presented in the figures below. Results are provided for S2A and S2B and for all bands except B09 & B10. All results are within the 5% (3%) radiometric accuracy requirement (Goal) respectively.



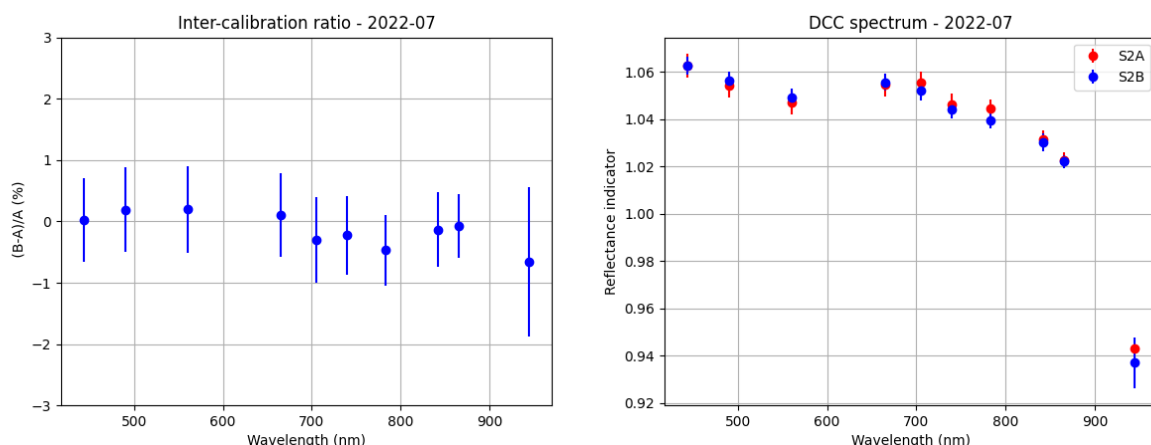
**Figure 8: Comparison of radiometric accuracy for all spectral bands (except B09 and B10): ratio of S2A measurement on reference. Error bars indicate the method uncertainty. Updated over Rayleigh and PICS up to 4/2022**



**Figure 9: Comparison of radiometric accuracy for all spectral bands (except B09 & B10): ratio of S2B measurement on reference. Error bars indicate the method uncertainty. Updated over Rayleigh and PICS up to 4/2022**

The validation of the inter-satellite relative radiometric uncertainty is performed using Deep Convective Cloud (DCC) images. The method is based on statistics of DCC reflectance and its comparison to radiative transfer modelling of the DCC reflectance spectrum.

Consistent results over time and across different geographical zones are obtained within this method. The results from July 2022 have shown excellent consistency and alignment between S2A and S2B on the VNIR spectral bands. For the SWIR bands, the generation of transmission LUT over the whole reflective spectral range for the characterization of above-cloud atmospheric transmissions is ongoing.



**Figure 10 : Inter-calibration ratio between S2A and S2B in function of the wavelength assessed based on acquisition from July (left). Reflectance indicator for all wavebands in the VNIR showing an alignment of S2A compared to S2B following the introduction of the radiometric harmonisation factor on 01/2022 (right)**

Tabulated results for bands B01 to B12 (B09 & B10 excluded) presented below indicate the effectiveness and reliability of the on-board calibration method for both sensors S2A/MSI and S2B/MSI.

**Table 2-3: Best estimate of S2A and S2B calibration gains from validation**

| Sensor | Wavelength (nm) | S2A              |                    | S2B              |                    |
|--------|-----------------|------------------|--------------------|------------------|--------------------|
|        |                 | Gain Coefficient | Standard Deviation | Gain Coefficient | Standard Deviation |
| B01    | 443             | 0.998            | 0.025              | 0.989            | 0.021              |
| B02    | 490             | 1.001            | 0.020              | 0.994            | 0.019              |
| B03    | 560             | 1.004            | 0.014              | 1.000            | 0.016              |
| B04    | 665             | 1.000            | 0.010              | 0.992            | 0.014              |
| B05    | 705             | N/A              | N/A                | N/A              | N/A                |
| B06    | 740             | 1.008            | 0.016              | 0.996            | 0.011              |
| B07    | 783             | 1.008            | 0.009              | 0.985            | 0.006              |
| B08    | 842             | 0.997            | 0.015              | 0.985            | 0.004              |
| B8A    | 865             | 1.002            | 0.006              | 0.993            | 0.003              |
| B11    | 1610            | 1.008            | 0.017              | 1.013            | 0.018              |
| B12    | 2190            | 1.000            | 0.012              | 1.009            | 0.007              |

Time series of measurements are also produced to monitor the evolution in time of the radiometric response, in particular to detect a possible degradation of the diffuser. The current assessment is compatible with the specified stability requirement for all visible and NIR bands (< 1% per year).

### 2.3.3 Noise

The SNR is computed based on:

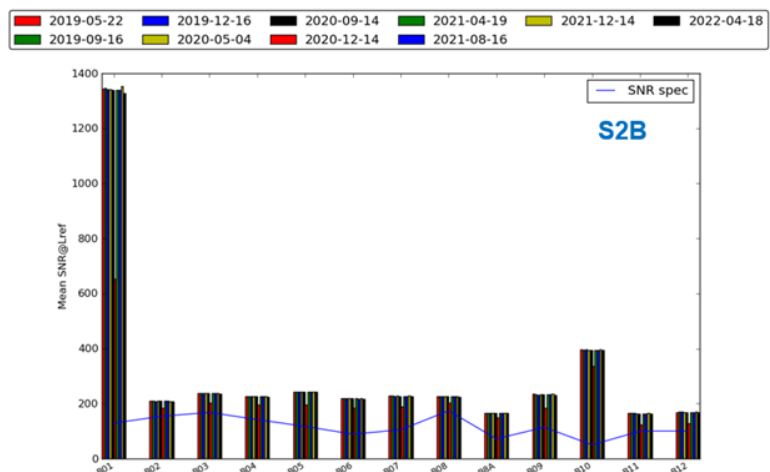
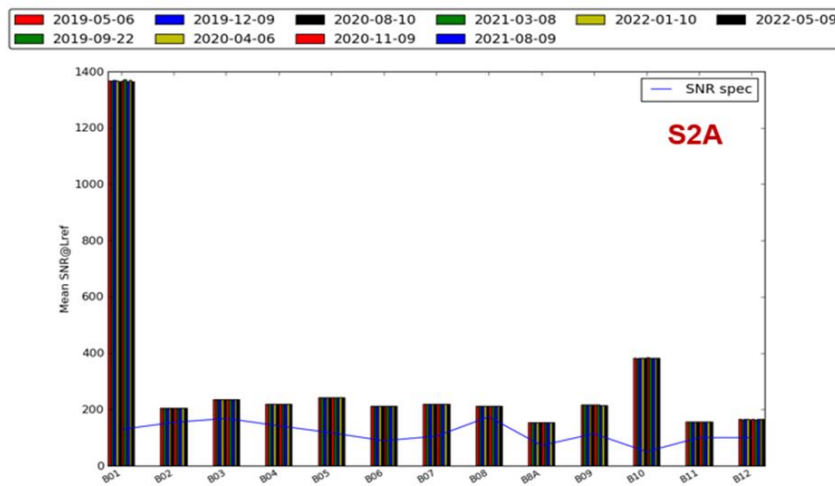
- ❖ diffuser acquisitions for short-term performance monitoring,
- ❖ homogeneous ground images for long-term performance assessment.

The SNR for both S2A and S2B is exceeding requirements (worst-case >160 for band B8A). The table below provides the most recent estimates (April 2020 for S2A and May 2020 for S2B).

**Table 2-4: Estimated SNR performance for S2A and S2B at reference radiance based on diffuser acquisitions.**

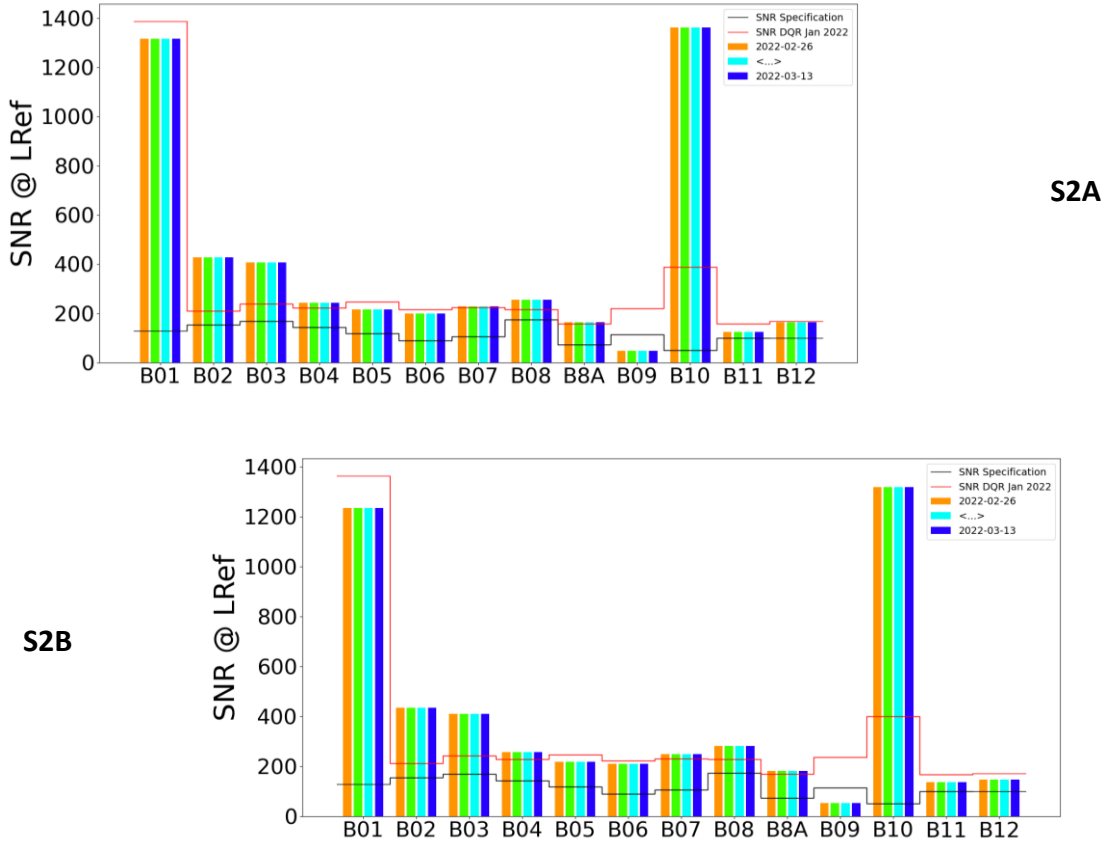
| Spectral Band                           | B1   | B2  | B3  | B4  | B5  | B6  | B7  | B8  | B8A  | B9  | B10 | B11 | B12 |
|---|------|-----|-----|-----|-----|-----|-----|-----|------|-----|-----|-----|-----|
| Ref. radiance [W/m <sup>2</sup> /sr/μm] | 129  | 128 | 128 | 108 | 75  | 68  | 67  | 103 | 52.5 | 9   | 6   | 4   | 2   |
| S2A                                     | 1388 | 210 | 239 | 222 | 247 | 215 | 223 | 216 | 157  | 219 | 388 | 158 | 167 |
| S2B                                     | 1363 | 212 | 242 | 229 | 247 | 222 | 231 | 229 | 168  | 237 | 400 | 167 | 171 |
| Requirement                             | 129  | 154 | 168 | 142 | 117 | 89  | 105 | 174 | 72   | 114 | 50  | 100 | 100 |

As seen in the figure below, the noise characteristics are very stable over time.



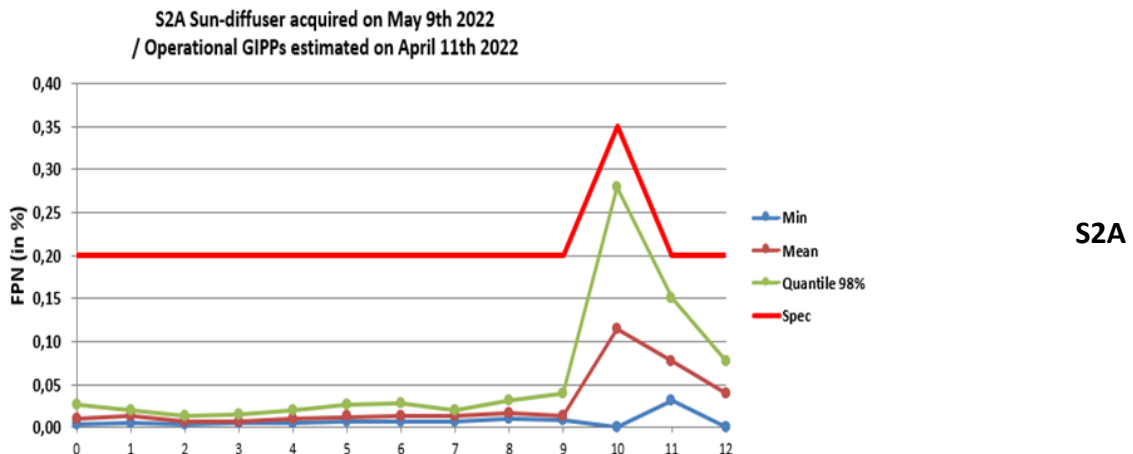
**Figure 11: Evolution of the SNR performances based on diffuser acquisitions for S2A from 06/05/2019 to 09/05/2022 (top) and S2B from 22/05/2019 to 18/04/2022 (bottom)**

The SNR is also computed over cloudless homogeneous landscapes. The results are consistent with the ones issued from the diffuser except bands B9 and B10 where the investigations are still ongoing.



**Figure 12 : Evolution of the SNR performances based on homogeneous natural acquisitions for S2A (top) and S2B (bottom) from 26/02/2022 to 13/03/2022**

Another aspect of the image noise is the so-called Fixed Pattern Noise (FPN): this is the residual pixel radiometric error after equalization. The performance computed on diffuser acquisitions is better than the specification for all bands except for a few pixels on bands B10 and B11.



S2B

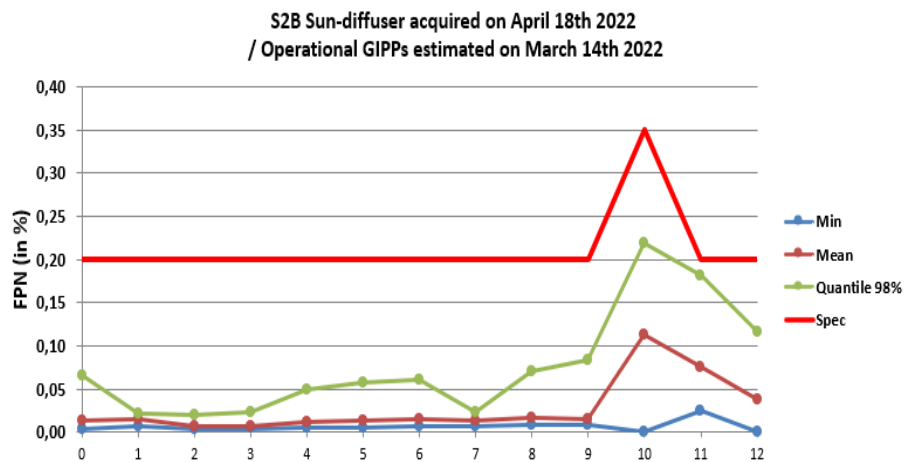


Figure 13: Fixed Pattern Noise (residual error after equalization) measured on diffuser images for S2A (top) and S2B (bottom). Blue curve: min FPN, marron: mean, green: 98 percentile, red: specified value.

The FPN is also computed on images over radiometrically uniform natural targets like deserts or snow. A selection based on the cloud cover is also done.

As for the assessment performed over diffuser acquisitions, the performance computed is better than the specification for all bands. For the band B10 the method is not applicable as the ground is not visible.

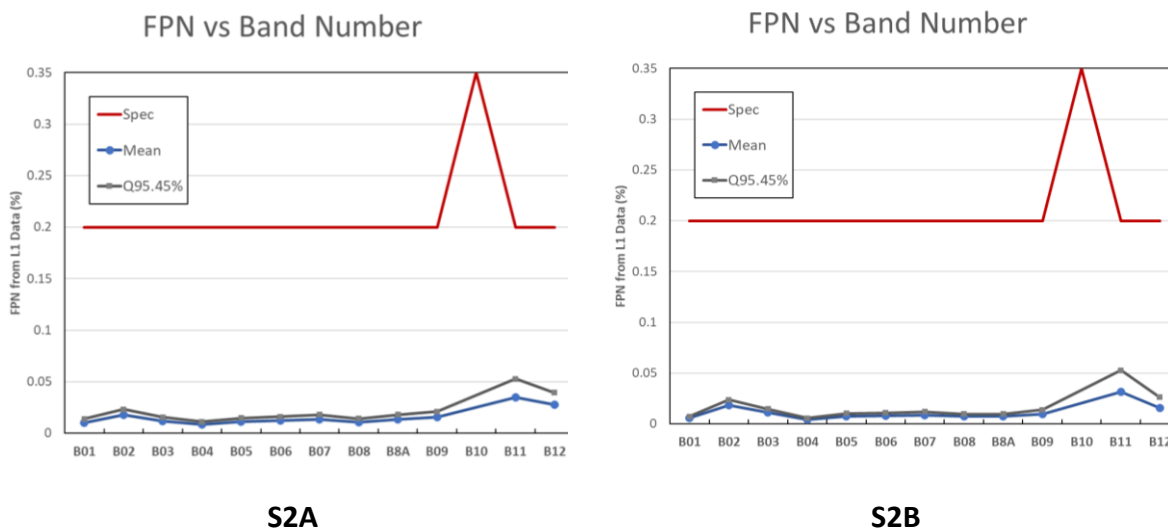


Figure 14 : Fixed Pattern Noise (residual error after equalization) measured on homogeneous natural images for S2A (left) and S2B (right). Blue curve: mean FPN, grey curve: Q95.45 percentile, red curve: specified value.

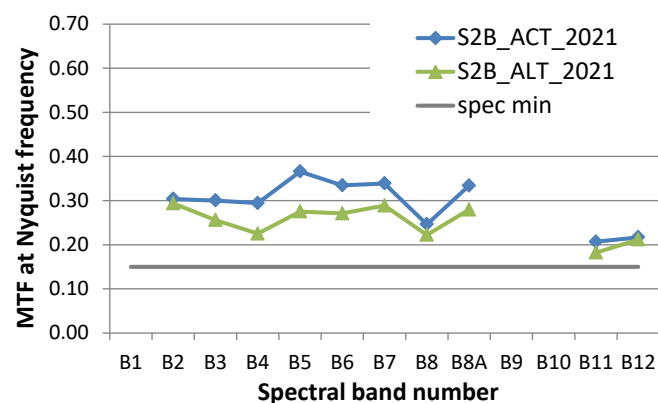
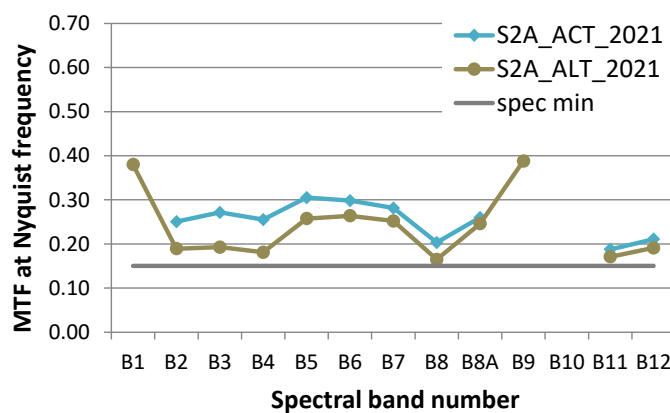
### 2.3.4 Modulation Transfer Function

The Modulation Transfer Function (MTF) has been estimated by analysing images with sharp edges for all bands (except B10 for which in-orbit assessment is difficult).

Globally the across track values measured in flight are lower than those expected from ground measurements. The MTF is above the maximum value requirement for B5, B6, B7 and B8A for the across and along track directions. Note that only the minimum value requirement has a direct impact on image quality. This requirement is satisfied for all bands.

**Table 2-5: S2A and S2B MTF performance assessments performed using products from 2021.**

| MTF@Nyquist frequency | S2A 2021        | S2B 2021 |
|-----------------------|-----------------|----------|
| Mean 10 m             | 0.21            | 0.27     |
| Mean 20 m B5 to B8A   | 0.27            | 0.31     |
| Mean 20 m B11 and B12 | 0.19            | 0.20     |
| Mean 60 m             | 0.38 (ALT only) |          |



**Figure 15: MTF performance assessments for S2A (top) and S2B (bottom) performed using products from 2021. Blue curve: ACT MTF, green: ALT MTF, grey: specified value.**



|  |  |  |
|--|--|--|
|  | <p><b>Optical MPC</b></p> <p><b>Data Quality Report – Sentinel-2 L1C MSI</b></p> <p><b>August 2022</b></p> | <p>Ref.: OMPC.CS.DQR.01.07-2022</p> <p>Issue: 78.0</p> <p>Date: 29/08/2022</p> <p>Page: 16</p> |
|--|--|--|

## 3 Processing Chain Status

### 3.1 Product Format

On December 6th 2016, a new naming convention has been introduced (Product Specification Document version 14). The new convention leads to shorter product paths with less redundancy of information. The product name now includes the acquisition date and a “product discriminator” which is related to the acquisition date but can be different in some instances.

A reformatting of the Data Hub product archive to the single-tile, short name format is currently in progress. The JP2000 images are not affected by the reformatting.

Note that the product footprint for all products generated before July 20th 2016 include areas of No Data, while for the later product the footprint outlines valid pixels only.

### 3.2 Acquisitions with low illumination conditions

Since October 23<sup>rd</sup>, 2019, the acquisition plan of Sentinel-2B has been extended to include high-latitude areas with low illumination conditions (Sun Zenith Angle up to 85°), <https://scihub.copernicus.eu/news/News00610>. Users can identify these products through the metadata field: *Level-1C\_Tile\_ID>Geometric\_Info > Tile\_Angles>Mean\_Sun\_Angle*.

### 3.3 Off-line products

Beginning 23<sup>rd</sup> September 2019, Sentinel-2 products older than one year will not be available on-line in the Copernicus data hubs. Instead, they will be retrieved on demand from the Long-Term Archive (LTA). Products retrieved from the LTA will be different from the original ones delivered in Near Real Time production:

- ❖ The product discriminator (the second date in the product) will be different. However, the zip file provided with the delivery will keep the name of the original product.
- ❖ The product will be restored using the latest applicable format (currently compact, single tile format, PSD v14.2).
- ❖ The GENERATION\_TIME field in the User Product metadata will also reflect the date of the retrieval from the LTA.

See <https://scihub.copernicus.eu/userguide/LongTermArchive> for more details.

|   |  |  |
|---|--|--|
|  | <p style="text-align: center;"><b>Optical MPC</b></p> <p style="text-align: center;"><b>Data Quality Report – Sentinel-2 L1C MSI</b></p> <p style="text-align: center;"><b>August 2022</b></p> | <p>Ref.: OMPC.CS.DQR.01.07-2022</p> <p>Issue: 78.0</p> <p>Date: 29/08/2022</p> <p>Page: 17</p> |
|---|--|--|

### 3.4 Reprocessed products

---

Two situations can lead to a recovery reprocessing and update of the SciHub archive:

- ❖ Products affected by major anomalies tracked in the Sentinel-2 anomaly database
- ❖ Datastrips with missing L1C tiles. In this case the products are not tracked in the anomaly database.

In both cases, the original products are removed and replaced by products with a more recent generation time. However, in the latter case, the original products can still be considered as valid.

### 3.5 Status of Processing Baselines and Known Processing Anomalies

The table below summarizes recent evolutions of the processing baseline and the known processing anomalies affecting the production. The dates mentioned in the table refer to the product creation date.

Note that anomaly #37, which was duplicating #11, has been deleted.

**Table 3-1: Summary of identified processing anomalies and associated processing baselines. Red: systematic anomaly. Orange: random anomaly affecting only a few products**

| Anomaly ID | Baseline number                      | 02.02      | 02.03      | 02.04      |            | 02.05      | 02.06      | 02.07      | 02.08      | 02.09 & 03.00 |                        |  |
|------------|--------------------------------------|------------|------------|------------|------------|------------|------------|------------|------------|---------------|------------------------|--|
|            | Deployment date                      | 03/05/2016 | 09/06/2016 | 15/06/2016 | 03/08/2016 | 26/01/2017 | 27/04/2017 | 23/10/2017 | 06/11/2018 | 08/06/2019    | 04/02/2020, 30/03/2021 |  |
|            | Anomaly title                        |            |            |            |            |            |            |            |            |               |                        |  |
| 4          | Instrument Measurement Time metadata |            |            |            |            |            |            |            |            |               |                        |  |
| 5          | Pixels with 0 value                  |            |            |            |            |            |            |            |            |               |                        |  |
| 7          | Missing Physical Gains metadata      |            |            |            |            |            |            |            |            |               |                        |  |
| 15         | Strong Misregistration               |            |            |            |            |            |            |            |            |               |                        |  |

| Anomaly ID | Baseline number                          | 02.02      | 02.03      | 02.04      |                | 02.05      | 02.06          | 02.07      | 02.08      | 02.09 & 03.00 |                        |
|------------|--|------------|------------|------------|----------------|------------|----------------|------------|------------|---------------|------------------------|
|            | Deployment date                          | 03/05/2016 | 09/06/2016 | 15/06/2016 | 03/08/2016     | 26/01/2017 | 27/04/2017     | 23/10/2017 | 06/11/2018 | 08/06/2019    | 04/02/2020, 30/03/2021 |
|            | Anomaly title                            |            |            |            |                |            |                |            |            |               |                        |
| 19         | Wrong footprint on ante-meridiem         |            |            |            |                |            |                |            |            |               |                        |
| 23         | Degraded AUX files                       |            |            |            |                |            |                |            |            |               |                        |
| 24         | Imprecise technical quality mask         |            |            |            |                |            |                |            |            |               |                        |
| 25         | Geolocation error on orbit 7174          |            |            |            | Orbit S2A 7174 |            |                |            |            |               |                        |
| 26         | Incomplete manifest                      |            |            |            |                |            |                |            |            |               |                        |
| 27         | Incorrect footprint and missing metadata |            |            |            |                |            |                |            |            |               |                        |
| 29         | Incorrect cloud MTD                      |            |            |            |                |            | A few products |            |            |               |                        |

| Anomaly ID | Baseline number                         | 02.02      | 02.03      | 02.04          |            | 02.05                    | 02.06                        | 02.07      | 02.08      | 02.09 & 03.00 |                        |
|------------|---|------------|------------|----------------|------------|--------------------------|------------------------------|------------|------------|---------------|------------------------|
|            | Deployment date                         | 03/05/2016 | 09/06/2016 | 15/06/2016     | 03/08/2016 | 26/01/2017               | 27/04/2017                   | 23/10/2017 | 06/11/2018 | 08/06/2019    | 04/02/2020, 30/03/2021 |
|            | Anomaly title                           |            |            |                |            |                          |                              |            |            |               |                        |
| 30         | Corrupted metadata                      |            |            |                |            | one occurrence           |                              |            |            |               |                        |
| 32         | Missing viewing angles at ante-meridiam |            |            |                |            |                          |                              |            |            |               |                        |
| 33         | Missing files                           |            |            |                |            | A few products           |                              |            |            |               |                        |
| 34         | Missing ECMWF files                     |            |            |                |            |                          | Sensing time near 9AM or 9PM |            |            |               |                        |
| 35         | Wrong quantification value              |            |            |                |            | Orbit S2A 10724 to 10729 |                              |            |            |               |                        |
| 36         | Misregistration B09 and B10             |            |            |                |            | Orbit S2A 11799          |                              |            |            |               |                        |
| 38         | 'Null' Folder                           |            |            | A few products |            |                          |                              |            |            |               |                        |

| Anomaly ID | Baseline number                      | 02.02      | 02.03      | 02.04      |            | 02.05      | 02.06                | 02.07      | 02.08      | 02.09 & 03.00 |                        |
|------------|--------------------------------------|------------|------------|------------|------------|------------|----------------------|------------|------------|---------------|------------------------|
|            | Deployment date                      | 03/05/2016 | 09/06/2016 | 15/06/2016 | 03/08/2016 | 26/01/2017 | 27/04/2017           | 23/10/2017 | 06/11/2018 | 08/06/2019    | 04/02/2020, 30/03/2021 |
|            | Anomaly title                        |            |            |            |            |            |                      |            |            |               |                        |
| 39         | Incorrect S2A spectral response      |            |            |            |            |            |                      |            |            |               |                        |
| 40         | Incorrect file name                  |            |            |            |            |            | A few products       |            |            |               |                        |
| 41         | Incorrect instrument temperature MTD |            |            |            |            |            |                      |            |            |               |                        |
| 42         | Incorrect NODATA mask format         |            |            |            |            |            | A few products       |            |            |               |                        |
| 44         | Incorrect Cloud Cover percentage     |            |            |            |            |            |                      |            |            |               |                        |
| 45         | Incorrect equalization               |            |            |            |            |            | 18/07/18 to 18/07/30 |            |            |               |                        |
| 46         | Missing Corners                      |            |            |            |            |            | 18/07/18 to 18/08/06 |            |            |               |                        |

| Anomaly ID | Baseline number                      | 02.02          | 02.03      | 02.04      |            | 02.05          | 02.06       | 02.07          | 02.08      | 02.09 & 03.00                  |                        |
|------------|--------------------------------------|----------------|------------|------------|------------|----------------|-------------|----------------|------------|--------------------------------|------------------------|
|            | Deployment date                      | 03/05/2016     | 09/06/2016 | 15/06/2016 | 03/08/2016 | 26/01/2017     | 27/04/2017  | 23/10/2017     | 06/11/2018 | 08/06/2019                     | 04/02/2020, 30/03/2021 |
|            | Anomaly title                        |                |            |            |            |                |             |                |            |                                |                        |
| 47         | S2A product processed as S2B         |                |            |            |            |                | Orbit 10722 |                |            |                                |                        |
| 49         | Misregistration of some S2A products |                |            |            |            |                |             | A few products |            |                                |                        |
| 51         | Corrupted product footprint          |                |            |            |            | A few products |             |                |            |                                |                        |
| 52         | Missing AUX files                    |                |            |            |            |                |             | A few products |            |                                |                        |
| 53         | Empty AUX files                      |                |            |            |            |                |             | A few products |            |                                |                        |
| 64         | Spurious viewing angle metadata      | A few products |            |            |            |                |             |                |            |                                |                        |
| 67         | Platform mismatch                    |                |            |            |            |                |             |                |            | Orbits S2A 21551 and S2B 16603 |                        |

|   |  |  |
|---|--|--|
|  | <p><b>Optical MPC</b></p> <p><b>Data Quality Report – Sentinel-2 L1C MSI</b></p> <p><b>August 2022</b></p> | <p>Ref.: OMPC.CS.DQR.01.07-2022</p> <p>Issue: 78.0</p> <p>Date: 29/08/2022</p> <p>Page: 23</p> |
|---|--|--|

## 3.6 Processing Baseline Status

### 3.6.1 Processing baseline 03.01

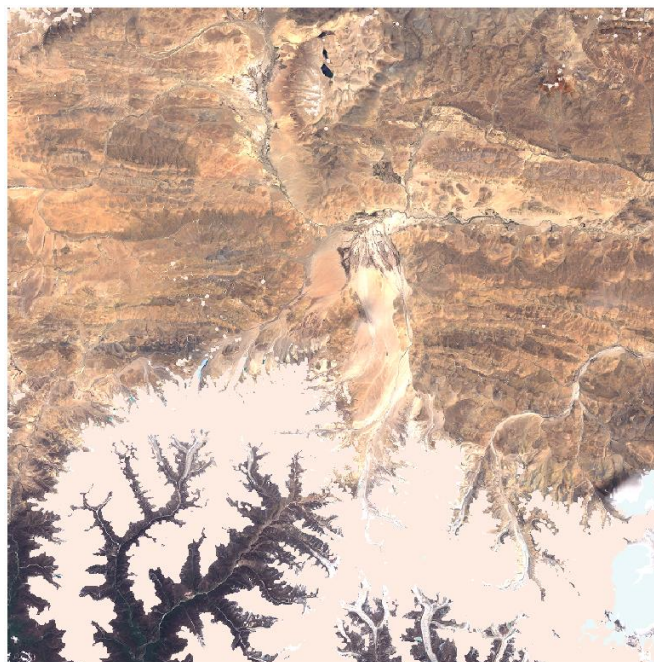
The processing baseline 03.01 was introduced on 30/06/2021. The evolution concerns only the product checksum algorithm which was changed from md5 to SHA3.

### 3.6.2 Processing baseline 04.00

On 25<sup>th</sup> January 2022 a new processing baseline was deployed. This new baseline represents a major product evolution with a change of the product format (new Product Specification Document version 14.8, [https://sentinels.copernicus.eu/documents/247904/685211/Sentinel-2-Products-Specification-Document-14\\_8.pdf](https://sentinels.copernicus.eu/documents/247904/685211/Sentinel-2-Products-Specification-Document-14_8.pdf)).

Regarding Level-1C products, the following evolutions are included:

- ❖ Correction of the **radiometric bias** between Sentinel-2A and Sentinel-2B (keeping Sentinel-2A as reference): Sentinel-2A and Sentinel-2B radiometric cross-calibration results have highlighted a small bias for VNIR bands B01 to B09. This radiometric difference has been mitigated by applying a radiometric bias correction of 1.1 % to Sentinel-2B VNIR bands B01 to B09.
- ❖ Generation of the Level-1C **quality masks in raster format**: Instead of the current GML format, the Level-1 quality masks are provided in multi-band single bit raster format (coded in JPEG2000). The masks are grouped in 3 categories as defined as follows:
  - MSK\_CLASSI: A band-independent raster file composed of the classification masks (layer 1: cloud, 2: cirrus, 3: snow). This mask is defined at a spatial resolution of 60 m.



**Figure 16: CLASSI mask – layer 1 (blue) cloud mask and layer 3 (pink) snow mask.**



- MSK\_QUALIT: For each spectral band, a raster file composed of all the radiometric and technical quality masks (layer 1: lost ancillary packets, 2: degraded ancillary packets, 3: lost MSI packets, 4: degraded MSI packets, 5: defective pixels, 6: no data, 7: partially corrected cross-talk, 8: saturated pixels). For each spectral band, the mask is defined at the same spatial resolution as that of the spectral band. In a first step, layer #7 and 8 (partially corrected and saturated) is not activated.
- MSK\_DETFOO: separately, for each spectral band, a 1-byte raster file using 4 bits to encode the 12 detector footprints. For each spectral band, the mask is defined at the same spatial resolution as that of the spectral band.
- ❖ Addition of the following ECMWF (European Centre for Medium-Range Weather Forecasts) **auxiliary parameters**: u/v wind components (10u and 10v) and relative humidity (r). The format of the AUX\_ECMWFT file remains unchanged.
- ❖ Addition in the product of the following CAMS (Copernicus Atmosphere Monitoring Service) **auxiliary parameters**:

**Table 3-2: Correspondence table between CAMS variable name and physical parameter name.**

| Band number | GRIB parameter ID | Physical parameter name and units if applicable                             |
|-------------|-------------------|---|
| 1           | Z                 | Geopotential (at the surface = orography) [m <sup>2</sup> /s <sup>2</sup> ] |
| 2           | var213            | Total Aerosol Optical Depth at 469nm (aod469)                               |
| 3           | var207            | Total Aerosol Optical Depth at 550nm (aod550)                               |
| 4           | var214            | Total Aerosol Optical Depth at 670nm (aod670)                               |
| 5           | var215            | Total Aerosol Optical Depth at 865nm (aod865)                               |
| 6           | var216            | Total Aerosol Optical Depth at 1240nm (aod1240)                             |
| 7           | var211            | Black Carbon Aerosol Optical Depth at 550nm (bcaod550)                      |
| 8           | var209            | Dust Aerosol Optical Depth at 550nm (duaod550)                              |
| 9           | var210            | Organic Matter Aerosol Optical Depth at 550nm (omaod550)                    |
| 10          | var208            | Sea Salt Aerosol Optical Depth at 550nm (ssaod550)                          |
| 11          | var212            | Sulphate Aerosol Optical Depth at 550nm (suaod550)                          |

The AUX\_DATA folder embedded in the Level-1C products contains the CAMS forecast data for that specific tile in a single dedicated GRIB file named as AUX\_CAMSFO.

- ❖ Introduction of a **radiometric offset** on reflectances digital numbers: The dynamic range is shifted by a band-dependent constant, i.e. RADIO\_ADD\_OFFSET. From the user's point of view, the L1C Top of Atmosphere (TOA) reflectance (L1C\_TOA) can be retrieved from the output radiometry as follows:

|  |  |  |
|--|--|--|
|  <p>OPT-MPC<br/>Optical Mission Performance Cluster</p> | <p><b>Optical MPC</b></p> <p><b>Data Quality Report – Sentinel-2 L1C MSI</b></p> <p><b>August 2022</b></p> | <p>Ref.: OMPC.CS.DQR.01.07-2022</p> <p>Issue: 78.0</p> <p>Date: 29/08/2022</p> <p>Page: 25</p> |
|--|--|--|

- Digital Number DN=0 remains the “NO\_DATA” value
- For a given DN in  $[1;2^{15}-1]$ , the L1C TOA reflectance value is:
- $L1C\_TOAi = (L1C\_DNI + RADIO\_ADD\_OFFSETi) / QUANTIFICATION\_VALUEi$
- The offset is reported in a new field in the General\_Info/Product\_Image\_Characteristics section of the Datastrip and User Product Metadata. The offset is set initially at -1000 digital counts for all spectral bands. This evolution allows avoiding the loss of information due to clamping of negative values in the predefined range [1-32767] that may occur over very dark surfaces.
- ❖ Addition of the **DOI (Digital Object Identifier)** in the Level-1C metadata: A DOI is a string of numbers, letters and symbols used to permanently identify a document and/or a dataset and to create a link to it on the web. The DOI url is reported in a new field in the General\_Info section of the Datastrip and User Product Metadata.

## 4 Product Anomalies

### 4.1 Introduction

This section describes all known product anomalies. Each anomaly is tagged with a code “#N” allowing linking it to a given Processing Baseline through Table 3-1.

The table below provides the status of anomalies which are not related to processing and can therefore not be corrected through reprocessing. It complements Table 3-1 above.

Anomalies affecting obsolete products (baseline 02.00) are no longer described in this report.

The complete list of anomalies is available on-line in the Sentinel-2 anomaly database <https://s2anomalies.acri.fr/anomalies>.

**Table 4-1: On-board Anomalies.**

| Anomaly ID | Anomaly title                                       | Criticality | Unit | Affected products                                  | Product status       |
|------------|---|-------------|------|--|----------------------|
| 9          | Striping of SWIR bands                              | Minor       | S2A  | A few orbits, not systematic                       | Available            |
| 10         | Striping of Visible bands                           | Major       | S2A  | A few orbits, not systematic                       | Removed from archive |
| 13         | B10 saturation                                      | Minor       | S2A  | Products with high reflectances                    | Available            |
| 14         | Geolocation error                                   | Major       | S2A  | Orbits 3218, 4080 and 4081                         | Removed from archive |
| 17         | Misaligned detectors on band 1                      | Minor       | S2A  | A few orbits impacted (beginning of the datastrip) | Available            |
| 18         | Geolocation Error                                   | Major       | S2A  | Orbits 6003 to 6011<br>Orbits 16381 to 16392       | Removed from archive |
| 23         | Acquisition with shutter closed                     | Major       | S2A  | Orbit 1037   | To be removed        |
| 43         | Geolocation error                                   | Major       | S2A  | Orbits 1296 to 1304                                | Removed from archive |
| 48         | Geolocation error following orbit control manoeuvre | Minor       | S2AB | Orbit 8366   | Available            |
| 50         | CAM – missing pixels                                | Major       | S2B  | Orbits 10439-10440                                 | Not disseminated     |
| 51         | CAM – major geolocation error                       | Major       | S2A  | Orbit 19751  | Removed              |

| Anomaly ID | Anomaly title                                | Criticality | Unit | Affected products | Product status |
|------------|--|-------------|------|-------------------|----------------|
| 75         | Geolocation and Band to Band misregistration | Major       | S2A  | Orbit 35292       | Available      |

## 4.2 Instrument Measurement Time metadata (#4)

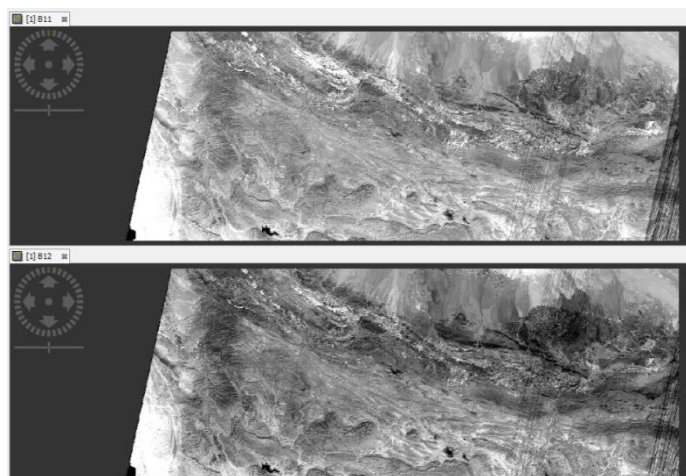
Within the satellite ancillary metadata, the value of Instrument Measurement Time (IMT) is not represented correctly due to a formatting error. This anomaly is corrected with product baseline 02.05.

## 4.3 Missing Physical Gains metadata (#7)

Band 12 is missing in the “physical gains” metadata of the user product. However the full list of physical gains is present in the metadata at granule level. This error was corrected early August 2016 and recent products are not anymore affected.

## 4.4 Striping of SWIR Bands (#9)

This anomaly is characterized by along-track stripes on some detectors of SWIR band images (see image below). Other detectors are also misaligned (along-track shift).



**Figure 17: Striping of SWIR bands (anomaly #9). Top: B11, Bottom, B12.**

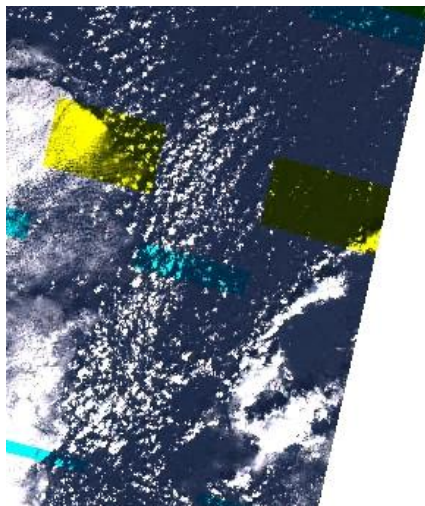
This anomaly occurred during commissioning as a result of an incorrect instrument configuration. Users are advised to use only VISNIR bands for the corresponding orbits.

**Table 4-2: List of orbits affected by anomaly #9.**

|      |      |      |      |
|------|------|------|------|
| 1118 | 1205 | 1302 | 1404 |
| 1143 | 1218 | 1308 |      |
| 1146 | 1227 | 1314 |      |
| 1151 | 1234 | 1319 |      |
| 1156 | 1244 | 1326 |      |
| 1159 | 1246 | 1329 |      |
| 1171 | 1251 | 1337 |      |
| 1175 | 1256 | 1342 |      |
| 1186 | 1261 | 1343 |      |
|      | 1272 | 1348 |      |
|      | 1274 | 1391 |      |
|      | 1298 | 1394 |      |

#### 4.5 Striping due to lost source packets (#10)

Data downlink issues sometimes lead to missing instrument source packets. This results in missing or corrupted pixels in L1C image, typically affecting only odd or even detectors and some spectral bands. The figure below presents an example of product affected by missing packets.



**Figure 18: L1C product affected by a large number of missing packets.**  
*This type of feature is not considered as an anomaly and will not lead to removal of affected products.*

|   |  |  |
|---|--|--|
|  <p><b>OPT-MPC</b><br/>Optical Mission Performance Cluster</p> | <p><b>Optical MPC</b></p> <p><b>Data Quality Report – Sentinel-2 L1C MSI</b></p> <p><b>August 2022</b></p> | <p>Ref.: OMPC.CS.DQR.01.07-2022</p> <p>Issue: 78.0</p> <p>Date: 29/08/2022</p> <p>Page: 29</p> |
|---|--|--|

Under the current quality control policy, this effect is not considered as an anomaly. Products affected by missing packets will remain in the archive.

This type of behavior is expected and traced in the product:

- ❖ a technical quality check is performed at datastrip level and reported in the End User product metadata in case of failure;
- ❖ the number of missing packets is reported in the datastrip metadata;
- ❖ the affected area is described in the technical quality masks (TECQUA gml files for masks previous to the baseline 04.00 and QUALIT JP2000 masks for the baseline 04.00).

#### 4.6 Missing viewing angles (#11)

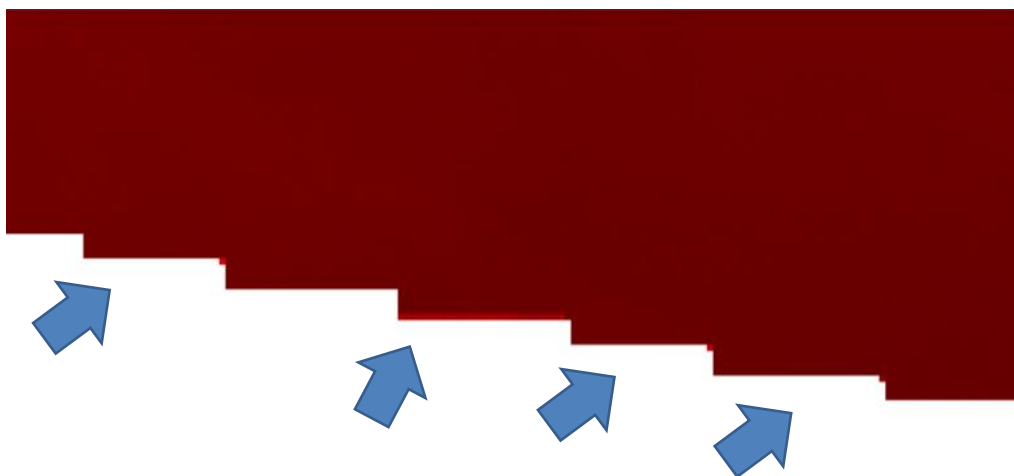
---

This anomaly affected a few products of baseline 02.01: the viewing angles (part of the granule Metadata) are missing for some spectral bands. It has been corrected on 31/03/2016.

#### 4.7 Anomalous Pixels (#12)

---

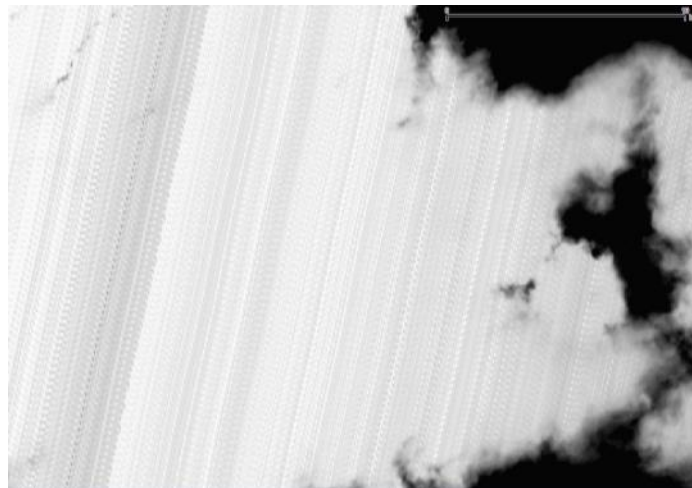
This anomaly is characterized by anomalous pixel values at the boundary of a datastrip. This anomaly has been corrected with baseline 02.02.



**Figure 19: Anomalous pixels on band B4 (anomaly #12).**

## 4.8 Saturation noise on Band 10 Images (#13)

This feature is characterized by noise patterns on bright images. It has now been identified as generated by saturation of the detector. This effect is not an anomaly in itself, however the saturation is currently not correctly reported in the image quality masks. A modification of the processor is in progress to solve this issue.



*Figure 20: Along-track noise pattern on B10 images over bright clouds (#13).*

## 4.9 Geolocation and Co-registration Error (#14)

A major anomaly has led to a strong and temporary geolocation and spectral registration errors. The anomaly occurred on February 3rd (orbit 3218) and April 3rd, 2016 (orbits 4080, 4081 and 4082). This anomaly has been correctly identified by the automatic on-line quality control and the degraded geometric performance is reported in the product metadata (geometric quality check status is “FAILED”). After identification of the anomaly, the defective products have been removed from the public archive.

The root cause of this anomaly has been identified. Missing data from attitude control telemetry is at the origin of the anomaly. An optimization of the management of the on-board telemetry has been implemented since and should avoid any re-occurrence.



*Figure 21: Spectral co-registration error (anomaly #14).*

|   |   |   |
|---|---|---|
|  | <b>Optical MPC</b><br><b>Data Quality Report – Sentinel-2 L1C MSI</b><br><b>August 2022</b> | Ref.: OMPC.CS.DQR.01.07-2022<br>Issue: 78.0<br>Date: 29/08/2022<br>Page: 31 |
|---|---|---|

#### 4.10 Strong Misregistration (#15)

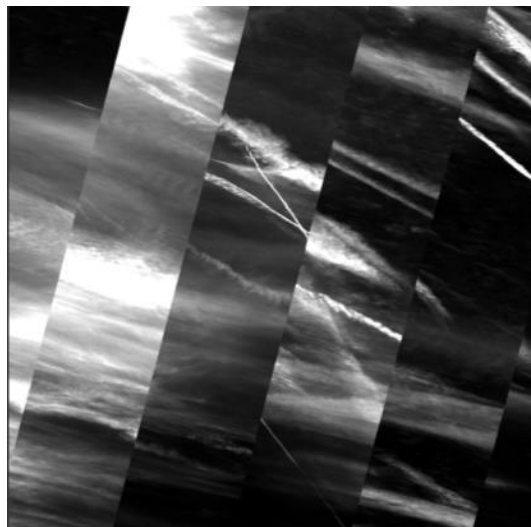
---

Processing Baseline 02.03 deployed on 09/06/2016 was affected by an anomaly due to an incorrect configuration of the processing centers. This anomaly results in a strong spectral misregistration. This issue was rapidly identified, defective products have been removed from the archive and subsequently reprocessed with baseline 02.02. After correction of the configuration error, baseline 02.04 was deployed on 15/06/2016.

#### 4.11 Stretching of 60 m Bands (#16)

---

This anomaly is characterized by an incorrect appearance of the 60 m bands: images are stretched across-track and discontinuities are visible between detector boundaries. A few occurrences have been observed, and none since 27/04/2016.



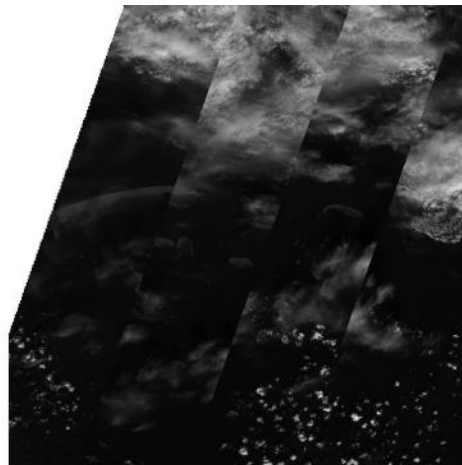
*Figure 22: Stretching of 60 m bands (anomaly #16).*

#### 4.12 Misaligned detectors on band 1 (#17)

---

An anomaly on the receiving ground station occurred on 12<sup>th</sup> of July 2016 and led to corrupted products for a few orbits (5509 to 5525). The anomaly affects only band 1 and is limited to the first products of the datastrips (Northern part). It is characterized by a misalignment of the odd and even detectors, as illustrated in the figure below.





**Figure 23: Detector misalignment on band B1 (anomaly #17).**

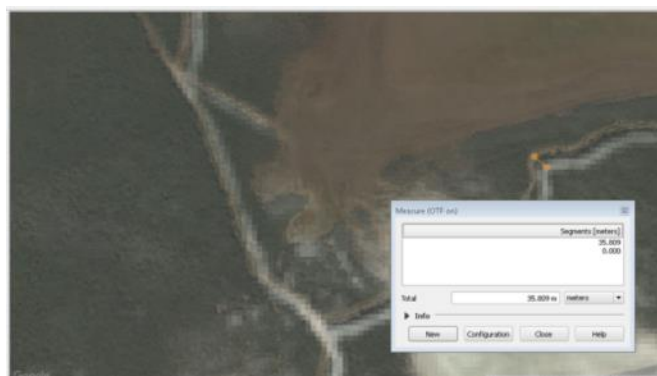
A possible correction of this anomaly by an ad-hoc reprocessing is under study.

### 4.13 Geolocation Error (#18)

This anomaly occurred while the satellite was performing a collision avoidance manoeuvre on 16th August 2016. One Star Tracker was temporarily blinded by the Sun, which led to a degradation of the attitude estimation. As a result, the geolocation of the products acquired during this period (orbits 6003 to 6011) is affected by a variable geolocation error of up to 100 meters.

Another occurrence of the same anomaly was detected on 12/08/2018 and affects S2A orbits 16 381 to 16 392.

The anomaly is related to the handling of the redundant Star Tracker in the attitude estimation system. A realignment of the Star Trackers has been performed on 20/05/2019 to prevent any new occurrence.



**Figure 24: S2 image superimposed with reference map, showing a geolocation error of 35 m (anomaly #18).**

### 4.14 Product footprint on the ante-meridien (#19)

With the introduction of single tile products in October 2016, an issue has been identified in the product footprint for tiles crossing the ante-meridien (180° longitude). The footprint should be composed of two polygons (above -180° and below +180°). Instead, only the second polygon is present.

This anomaly has been fixed on 26/01/2017. All points are now present but in a single polygon.

|   |   |   |
|---|---|---|
|  | <b>Optical MPC</b><br><b>Data Quality Report – Sentinel-2 L1C MSI</b><br><b>August 2022</b> | Ref.: OMPC.CS.DQR.01.07-2022<br>Issue: 78.0<br>Date: 29/08/2022<br>Page: 33 |
|---|---|---|

#### 4.15 Degraded AUX files (#20)

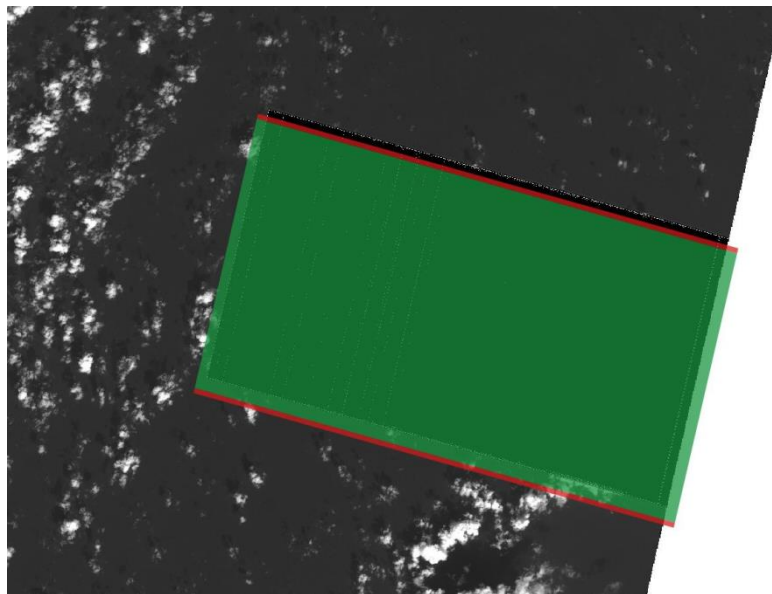
This anomaly affects the ECMWF auxiliary files, for some specific tiles. The files are truncated and contain aberrant values. This anomaly is fixed with production baseline 02.05.

#### 4.16 Acquisition with shutter closed (#23)

On 03/09/2015 S2A orbit 1037 has been acquired with the shutter closed in order to verify the instrument straylight performance. The product was released by mistake to the public archive. The images are almost completely dark (< 5 digital counts). This orbit will be removed from the archive shortly.

#### 4.17 Imprecise technical quality mask (#24)

Since October 2016, technical quality masks (TECQUA) are reporting instance of lost data packets (see anomaly #10). However, it has been found that the masks are not perfectly accurate (see figure below). This anomaly is essentially corrected with production baseline 02.05. Some residual errors have been observed, which led to a further improvement deployed the 07/06/2018. A final fix has been implemented with PB 03.00 (30/03/2021).



**Figure 25: Technical Quality masks (green: lost packets, red: degraded packets) overlaid over an affected image. A small gap exists between the mask and the affected area (anomaly #24).**

|   |   |   |
|---|---|---|
|  | <b>Optical MPC</b><br><b>Data Quality Report – Sentinel-2 L1C MSI</b><br><b>August 2022</b> | Ref.: OMPC.CS.DQR.01.07-2022<br>Issue: 78.0<br>Date: 29/08/2022<br>Page: 34 |
|---|---|---|

#### 4.18 Geolocation error on orbit 7174 (#25)

---

A geolocation error of more than 100 m has been observed on the first datastrip of orbit 7174 (acquired 05/11/2016). A reprocessing is planned for this datastrip to correct this anomaly.

#### 4.19 Incomplete manifest (#26)

---

In products generated before 18/05/2017, the meteorology Auxiliary files are missing from the file listing in the manifest.safe.

#### 4.20 Inaccurate footprint and incomplete metadata (#27)

---

This anomaly occurred on January 20<sup>th</sup> 2017 following a change in the user product generation chain, and was solved on January 26<sup>th</sup> 2017. The anomaly affected the diffusion of products on the SciHub, and as a result few products affected by this anomaly have been disseminated. The characteristics of this anomaly are:

- ❖ Coarse precision of product footprint (1/3°),
- ❖ Missing Datastrip Identifier and granule Identifier attributes.

#### 4.21 Incorrect cloud coverage metadata (#29)

---

Two products have been found affected by this anomaly. The products have very small data coverage and are completely cloudy. The cloud mask is accurate but the cloud coverage metadata is reported as zero. The affected products are 30UXB on 11/02/2017 and 50KQL on 12/04/2017.

The issue has been fixed the 07/06/2018.

#### 4.22 Corrupted metadata (#30)

---

The product for tile 50SQA generated on 20/03/2017 has several metadata with an incorrect “0” value (quantification value, spectral irradiances). No other product has been found with this anomaly so far.

#### 4.23 Missing viewing angles metadata (#32)

---

Viewing angles metadata (part of L1C granule metadata) are systematically missing for tiles of UTM zone 01 crossing the ante-meridiem. This anomaly is fixed with baseline 02.06.

#### 4.24 Missing files (#33)

---

Some recent products have been found with one or several files missing (spectral bands or metadata files). This anomaly is now corrected for real time processing and the archive is progressively cleaned.

#### 4.25 Missing ECMWF auxiliary files (#34)

---

In some products from baseline 02.06, the meteorology auxiliary files (ECMWF data) are missing in the products. The issue has been solved in February 2018.

## 4.26 Wrong quantification value (#35)

An incorrect calibration file has been deployed by error for S2A on 12/06/2017 and affected orbits 10724 to 10729. The quantification value is 1,000 instead of 10,000. The affected products have been reprocessed and the archive will be updated. A new occurrence was found on orbits 634, 704 and 705. The remediation is in progress.

## 4.27 Misregistration on bands 9 and 10 (#36)

On 25/09/2017, an anomaly at the reception station led to a severe loss of instrument source packets. As a side effect, a misregistration of bands B09 and B10 has been observed downstream of the area affected by missing packets. In view of this strong degradation, the affected orbit (S2A orbit 11 799) will be removed from the archive.

## 4.28 “Null” folder (#38)

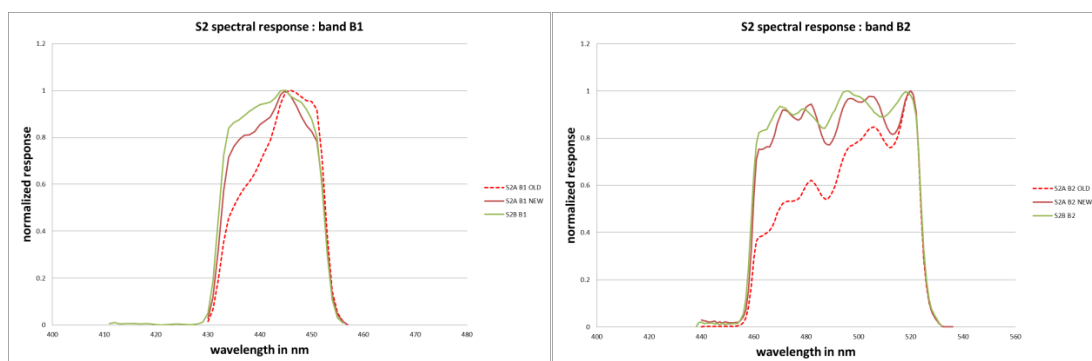
A few products of baseline 02.04 have been generated with an additional empty Granule folder with a name ending with “null”. As a side effect, this generates a failure with Sen2cor. This very minor anomaly can be corrected by deleting the empty folder.

## 4.29 Incorrect S2A Spectral Response Function (#39)

The spectral response functions provided in the metadata of the S2A products are affected by errors affecting mostly bands B01, B02 and B08. The anomaly has been corrected on January 15th 2018 (cf.

<https://cophub.copernicus.eu/news/News00138>).

Note that this issue has negligible impact on the radiometry of the L1C reflectance products. On the other hand, the conversion to radiance values and the computation of downstream products relying on the spectral response function can be impacted (such as L2A products).



**Figure 26: Spectral Response Functions for bands B01 and B02.**  
**Red – dashed: S2A before correction. Red – solid: S2A after correction. Green: S2B.**

|   |   |   |
|---|---|---|
|  | <b>Optical MPC</b><br><b>Data Quality Report – Sentinel-2 L1C MSI</b><br><b>August 2022</b> | Ref.: OMPC.CS.DQR.01.07-2022<br>Issue: 78.0<br>Date: 29/08/2022<br>Page: 36 |
|---|---|---|

### 4.30 Incorrect Product Name (#40)

---

A few S2B products have been found with an additional number (0 or 1) at the end of the product discriminator field. This minor anomaly has been understood and correction actions are in progress to prevent re-occurrence. In the meantime, the products will be removed and replaced with new ones with the correct naming.

#### Incorrect Instrument Temperature metadata (#41)

This anomaly affects the Instrument temperature data reported in the “expertise” section of the Datastrip metadata. The temperatures are not converted to degrees Celsius as they should be. In addition, the GPS time is not correctly reported. This minor anomaly affects all products of baseline 02.06 and earlier. Remediation is in progress.

### 4.31 Incorrect NODATA mask format (#42)

---

A few products from baseline 02.06 have been generated which use a comma ‘,’ instead of a decimal point ‘.’ in the description of the mask polygon (NODATA and DEFECT masks). This minor error is due to an incorrect language setting which has been corrected. It does not prevent the handling of the products by such tools as SNAP, QGIS or Sen2cor. The issue has been finally solved on 24/05/2018.

### 4.32 Geolocation error due to GPS anomaly (#43)

---

Due to an anomaly on the GPS receiver of S2A in September 2015, orbits 1296 to 1304 (inclusive) were affected with a large geolocation error (up to 1000 m). Affected products have been removed from the archive.

### 4.33 Incorrect cloud coverage percentage (#44)

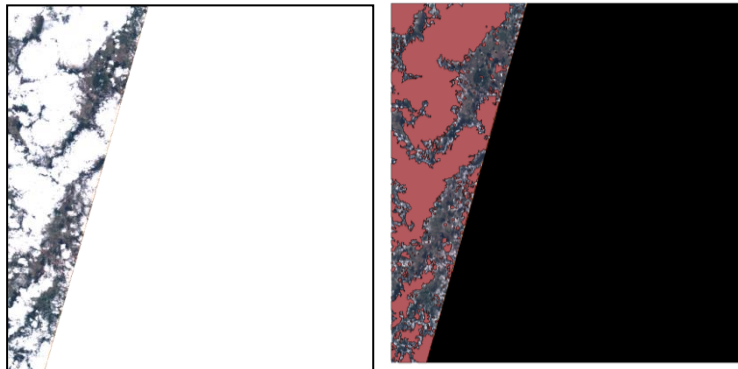
---

This anomaly affects the “Cloud\_Coverage\_Assessment” parameter reported in the user product metadata as well as the “CLOUDY\_PIXEL\_PERCENTAGE” of the tile metadata for products with a partial acquisition. The percentage is not correctly computed and can lead to over- or under-estimation of the percentage.

Since the Sentinel Data Hub uses this metadata to record catalogue entries, requests using filtering on cloud percentage can be affected.

On the other hand, the cloud mask itself is correct.

|  |  |  |
|--|--|--|
|  <p>OPT-MPC<br/>Optical Mission Performance Cluster</p> | <p style="text-align: center;"><b>Optical MPC</b></p> <p style="text-align: center;"><b>Data Quality Report – Sentinel-2 L1C MSI</b></p> <p style="text-align: center;"><b>August 2022</b></p> | <p>Ref.: OMPC.CS.DQR.01.07-2022</p> <p>Issue: 78.0</p> <p>Date: 29/08/2022</p> <p>Page: 37</p> |
|--|--|--|

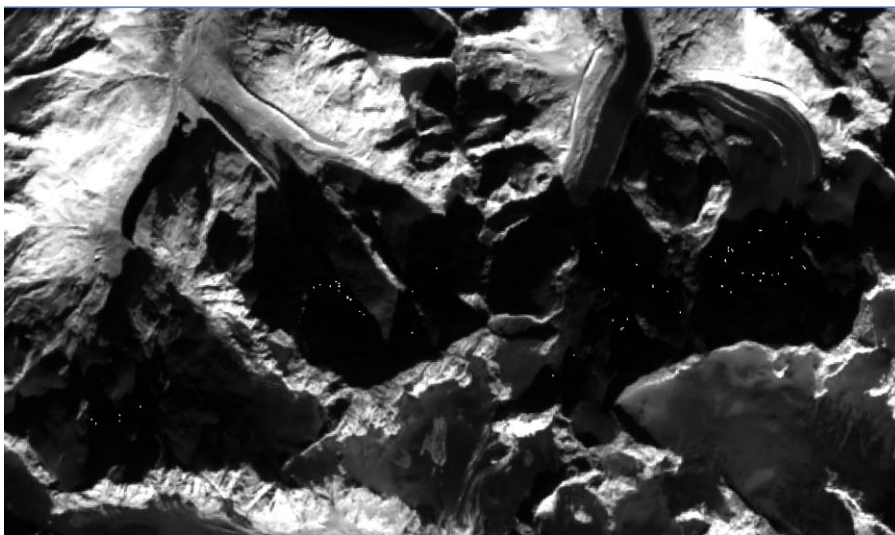


**Figure 27: Tile 40UGE acquired on 12/06/2018 by S2B. Left: RGB composite, Right: cloud mask (in red). The cloud coverage percentage is incorrectly reported as 19.3% (anomaly #44).**

Anomaly #44 is corrected with baseline 02.07.

#### 4.34 Pixels with 0 value (#5)

Until product baseline 02.01, several products had valid pixels with a reflectance value of 0 (No Data) instead of 1 (minimal reflectance). This anomaly was essentially fixed with baseline 02.01. However, errors induced by compression noise can still be found on very dark areas (e.g. over topographic shadows or water on SWIR bands).

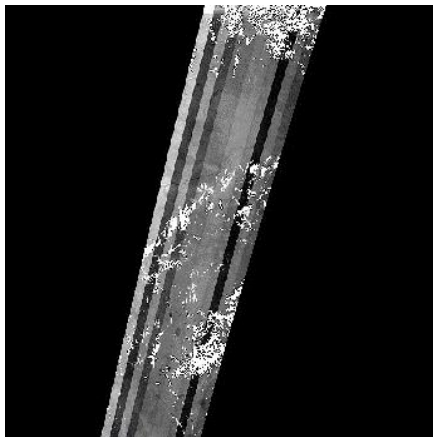


**Figure 28: Pixels with 0 value (No Data) shown here as transparent, in a dark area of a B12 image (Anomaly #5).**

|  |  |  |
|--|--|--|
|  <p>OPT-MPC<br/>Optical Mission Performance Cluster</p> | <p style="text-align: center;"><b>Optical MPC</b></p> <p style="text-align: center;"><b>Data Quality Report – Sentinel-2 L1C MSI</b></p> <p style="text-align: center;"><b>August 2022</b></p> | <p>Ref.: OMPC.CS.DQR.01.07-2022</p> <p>Issue: 78.0</p> <p>Date: 29/08/2022</p> <p>Page: 38</p> |
|--|--|--|

### 4.35 Incorrect equalization (#45)

Since 18/07/2018, equalization issues have been observed on S2A products. The issue is especially visible on Band 10 if the contrast is enhanced. This issue also affects the cirrus cloud mask which may exhibit discrepancies between detectors. Note that the impact on the radiometry is limited to a few percent. The anomaly has been corrected on 30/07/2018.

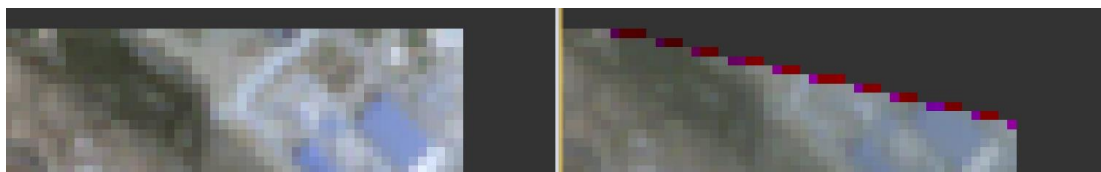


*Figure 29: Incorrect equalization of B10 for S2A (anomaly #45).*

### 4.36 Missing corners (#46)

Since 22/06/2018 an anomaly affects all L1C products. A triangular area of 50 to 100 pixels is systematically missing on the top-right and bottom-left corners of each tile. The affected area can be larger at high latitudes.

These pixels are flagged by the “No-Data” mask so no impact on downstream processing is expected.



*Figure 30: Top-right corner of the image of the same L1C tile from orbit 7053 (unaffected, left) and orbit 7196 (affected, right). (Anomaly #46)*

This anomaly has been fixed on 08/09/2018. Affected products are still present on the archive.

### 4.37 S2A products processed as S2B (#47)

On 25/09/2018, 132 products from S2A orbit 17022 have been incorrectly processed as S2B products. This induces large discrepancies on radiometric and geometric performances. This anomaly was corrected on 02/10/2018 (affected products removed and reprocessed as S2A products).

### 4.38 Geolocation Error after orbit control manoeuvre (#48)

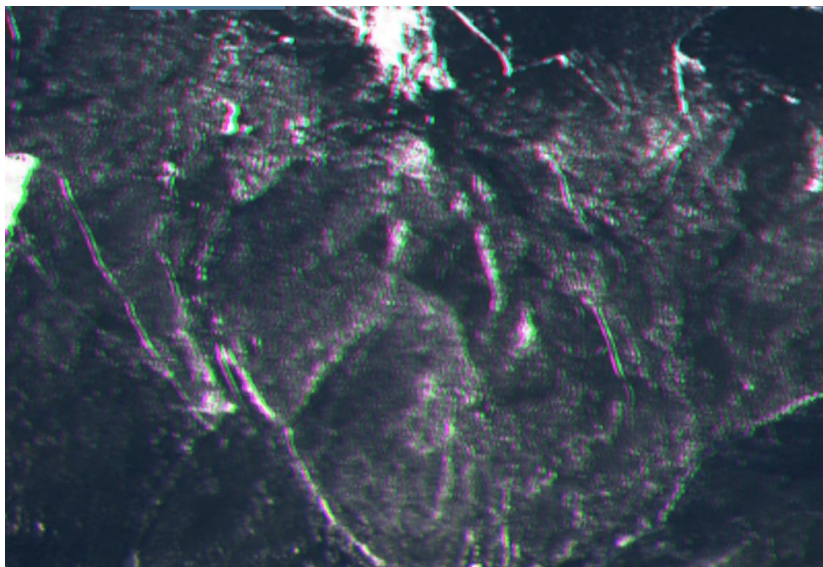
On 12/10/2018 (orbit 8366) a geolocation error of up to 40 m has been observed. This error is caused by a collision avoidance manoeuvre performed during observation time. The products are available from the

|   |   |   |
|---|---|---|
|  | <b>Optical MPC</b><br><b>Data Quality Report – Sentinel-2 L1C MSI</b><br><b>August 2022</b> | Ref.: OMPC.CS.DQR.01.07-2022<br>Issue: 78.0<br>Date: 29/08/2022<br>Page: 39 |
|---|---|---|

archive but should be used with caution. The manoeuvre planning procedures have been updated in order to avoid a repetition of this anomaly.

#### 4.39 Misregistration of some S2A products (#49)

This anomaly occurred during 05/02/2019 and 12/02/2019. Some S2A products were affected by a variable spectral misregistration (up to 2 pixels). This anomaly has been fixed and the affected products have been reprocessed.



**Figure 31: Spectral misregistration (anomaly #49). Affected S2A products (between 04/02/2019 and 14/02/2019) have been removed from the archive and reprocessed.**

#### 4.40 Collision Avoidance Manoeuvre: missing pixels (#50)

On 07/03/2019 S2B performed an emergency collision avoidance manoeuvre which required a slew performed during acquisition. Several orbits were lost while products from orbit 10439 and 10440 were affected by missing data at the interface between detectors. Other occurrences:

- ❖ 31/01/2020: S2B orbit 15170
- ❖ 02/05/2021: S2B orbit 21702
- ❖ 06/27/2021: S2A orbit 31409

Affected products have been removed from the archive.

#### 4.41 Collision Avoidance Manoeuvre: Major geolocation error (#51)

Products acquired shortly after a collision avoidance manoeuvre (S2A orbit 19751 on 04/04/2019) are affected with a geolocation error larger than 50 m. Products have been removed from the archive.



|   |   |   |
|---|---|---|
|  | <b>Optical MPC</b><br><b>Data Quality Report – Sentinel-2 L1C MSI</b><br><b>August 2022</b> | Ref.: OMPC.CS.DQR.01.07-2022<br>Issue: 78.0<br>Date: 29/08/2022<br>Page: 40 |
|---|---|---|

#### 4.42 Corrupted footprint (#52)

---

The product footprint is reduced to a very small triangle. This anomaly occurs randomly with a very low rate. This anomaly is fixed with processing baseline 02.09.

#### 4.43 Missing AUX ECMWF files (#53)

---

This anomaly is similar to #34 affecting some products of the archive. This new occurrence affected products from S2A orbit 20681, as well as S2B orbits 11772 and 11773. Affected products have been deleted from the archive and reprocessed on 01/07/2019.

#### 4.44 Empty AUX ECMWF files (#54)

---

This anomaly concerned orbits S2A 20892 and S2B 11983 and 11984, which were produced with an empty ECMWF file.

Products have been deleted and reprocessed on 07/07/2019.

#### 4.45 Spurious viewing angle metadata (#64)

---

In some cases, the L1C user product metadata MSIL1C\_MTD.xml contain viewing angle information for detectors which are not present in the product. This minor anomaly is corrected with processing baseline 02.09.

#### 4.46 Platform mismatch (#67)

---

On 13/05/2020 and 14/05/2020, a few S2A products were processed as S2B. As a result, the radiometric and geometric performance of the products were severely degraded. This anomaly affected products from sensing orbit S2A 25511. Affected products have been removed from the archive and replaced with correct products on 26/05/2020.

#### 4.47 Geolocation and mis-registration due to incorrect configuration (#68)

---

This anomaly affects S2A products from orbit 30458 to 30461 generated on the 22/04/2021. The products have a geolocation error of up to 30 m and spectral mis-registration. The anomaly was due to an incorrect processing configuration. The affected products were reprocessed on 25/04/2021 and all affected products have been removed on 04/05/2021.

#### 4.48 Products with incorrect checksum (#69)

---

On 21/05/2021, around 600 L1C products were processed with an SHA-256 checksum instead of the expected md5 for products of PB 03.00. The product quality is otherwise nominal. The recovery of this anomaly is in progress.

#### 4.49 Zero solar irradiance (#70)

---

On 02/09/2021, one S2A datastrip from orbit 32364 (over East Africa) was incorrectly processed which led to an incorrect value of 0 for the solar irradiance metadata. An example of affected product is:

|   |   |   |
|---|---|---|
|  | <b>Optical MPC</b><br><b>Data Quality Report – Sentinel-2 L1C MSI</b><br><b>August 2022</b> | Ref.: OMPC.CS.DQR.01.07-2022<br>Issue: 78.0<br>Date: 29/08/2022<br>Page: 41 |
|---|---|---|

- ❖ S2A\_MSIL1C\_20210902T072621\_N0301\_R049\_T37NGJ\_20210902T100010

The affected products have been removed from the archive.

#### **4.50 Products with large misregistration following missing packets (#71)**

This anomaly concerns datastrip for which data packets have been lost. The processed products are affected by large geolocation errors and possibly spectral co-registration errors. Two occurrences were detected:

- ❖ S2A orbit 31188, datastrip over Borneo (12/06/2021)
- ❖ S2A orbit 32722, datastrip over the Middle East (27/09/2021)

Products from the first occurrence have been removed (on 13/07/2021) but not yet reprocessed. For the second one the recovery was completed on 01/10/2021.

Other occurrences were identified in December 2021:

- ❖ S2B orbit 24978 (17/12/2021) Gambier islands, South Pacific
- ❖ S2B orbit 25041 (22/12/2021) Qinghai province, China

The datastrips include products without any valid pixel. Products are still present in the archive.

#### **4.51 Corrupted ECMWF auxiliary files (#72)**

This issue affects random products from Processing Baselines 03.00 and 03.01. The auxiliary ECMWF contain erroneous values. This anomaly is corrected with baseline 04.00.

#### **4.52 Inconsistent data loss report**

This anomaly concerns products affected with missing packets (data loss). The reports in the Datastrip Metadata and the Granule metadata are inconsistent. Known occurrences are listed below:

- ❖ S2A\_MSIL1C\_20220110T155631\_N0301\_R054\_T18UXE\_20220110T175004.SAFE has missing packets on bands 1,7,8A,9, and 12 but reports 0 lost packet at datastrip level
- ❖ S2B\_MSIL1C\_20211215T234509\_N0301\_R044\_T54DVM\_20211216T003204.SAFE has missing packets on band 3 but reports 0 lost packet at datastrip level
- ❖ S2B\_MSIL2A\_20220131T161509\_N0400\_R140\_T17RLN\_20220131T185140.SAFE has missing packets reported in the datastrip metadata but missing from the tile metadata.

This minor anomaly was identified with the ID = 73 in the Sentinel 2 Anomalies database and is currently under investigation.

## 5 Pixels Status

### 5.1 Defective pixels

#### 5.1.1 S2A

In the following tables are listed all the identified defective pixels which are currently replaced by an interpolation of neighboring pixels.

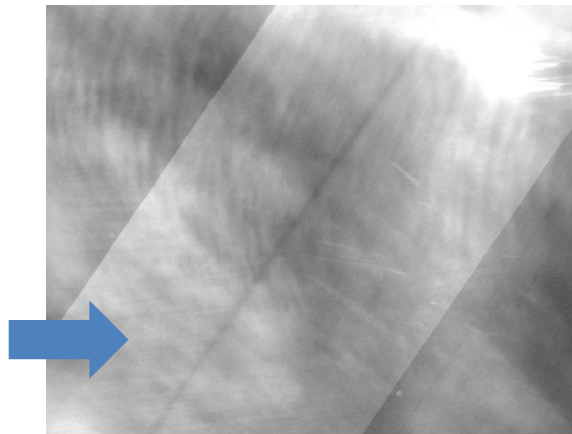
On 04/06/2018, a SWIR reselection operation has been performed. This operation has allowed reverting some defective status to nominal as indicated in the table below.

On 20/04/2020, a new potentially defective pixel has been identified on B11. This was not confirmed by subsequent observations, so the pixel is still considered healthy.

**Table 5-1: Defective pixels on S2A**

| Band B10 |          |                       | Current status & R2DEPI defective pixels |              |
|----------|----------|-----------------------|--|--------------|
| Band     | Detector | Pixel number (from 0) | Current status                           | Last updated |
| B10      | 4        | 1104                  | Nominal                                  | 18/07/2018   |
| B10      | 10       | 879                   | Defective                                | 23/06/2015   |
| B10      | 10       | 1174                  | Defective                                | 23/06/2015   |
| B11      | 2        | 1055                  | Monitored                                | 20/04/2020   |
| B12      | 1        | 440                   | Defective                                | 26/08/2015   |
| B12      | 1        | 703                   | Nominal                                  | 18/07/2018   |
| B12      | 5        | 174                   | Nominal                                  | 18/07/2018   |

In addition to the defective pixels listed above, a group of pixels (570 to 600) of Band 11 D11 are affected by a non-linear radiometric response. This effect generates a darker along-track area in dark B11 images (e.g. on snow, see figure below).



*Figure 32: Along-track stripe on B11 image due to a non-linear response on D11 (contrast strongly enhanced).*

### 5.1.2 S2B

*Table 5-2: Defective pixels on S2B band 12.*

| Band B12 |          |                       | Current status & R2DEPI defective pixels |              |
|----------|----------|-----------------------|--|--------------|
| Band     | Detector | Pixel number (from 0) | Current status                           | Last updated |
| B12      | D3       | 1132                  | Defective                                | 30/05/2017   |
| B12      | D11      | 760                   | Defective                                | 30/06/2018   |

## 5.2 Reset Spike pixels

During the MSI design phase, it has been identified that a few pixels of the 10 m bands are affected by an electronic cross-talk during detector read-out. This results in errors which can reach a few digital counts, depending on the observed scene.

The following tables provide the list of affected pixels.

**Table 5-3: S2A Pixel affected by reset spike noise.**

| Band          | pixel number        |                      | Current status    |
|---------------|---------------------|----------------------|-------------------|
|               | Odd detector number | Even detector number |                   |
| B02, B03, B04 | 35                  | 2556                 | Pixel Reset Noise |
|               | 489                 | 2102                 | Pixel Reset Noise |
|               | 781                 | 1810                 | Pixel Reset Noise |
|               | 961                 | 1630                 | Pixel Reset Noise |
|               | 1036                | 1555                 | Pixel Reset Noise |
|               | 1177                | 1414                 | Pixel Reset Noise |
|               | 1252                | 1339                 | Pixel Reset Noise |
|               | 1724                | 867                  | Pixel Reset Noise |
|               | 1822                | 769                  | Pixel Reset Noise |
| B08           | 35                  | 2556                 | Pixel Reset Noise |

**Table 5-4: S2B Pixel affected by reset spike noise.**

| Band   | Pixel number        |                      | Current status    |
|--------|---------------------|----------------------|-------------------|
|        | Odd detector number | Even detector number |                   |
| B2     | 618                 | 1973                 | Pixel Reset Noise |
|        | 619                 | 1972                 | Pixel Reset Noise |
|        | 715                 | 1876                 | Pixel Reset Noise |
|        | 895                 | 1696                 | Pixel Reset Noise |
|        | 1047                | 1544                 | Pixel Reset Noise |
|        | 1539                | 1052                 | Pixel Reset Noise |
|        | 1596                | 995                  | Pixel Reset Noise |
|        | 1612                | 979                  | Pixel Reset Noise |
|        | 1669                | 922                  | Pixel Reset Noise |
| B3, B4 | 187                 | 2404                 | Pixel Reset Noise |
|        | 619                 | 1972                 | Pixel Reset Noise |

| Band | Pixel number        |                      | Current status    |
|------|---------------------|----------------------|-------------------|
|      | Odd detector number | Even detector number |                   |
|      | 715                 | 1876                 | Pixel Reset Noise |
|      | 895                 | 1696                 | Pixel Reset Noise |
|      | 1047                | 1544                 | Pixel Reset Noise |
|      | 1539                | 1052                 | Pixel Reset Noise |
|      | 1596                | 995                  | Pixel Reset Noise |
|      | 1612                | 979                  | Pixel Reset Noise |
|      | 1669                | 922                  | Pixel Reset Noise |
| B5   | 1243                | 52                   | Pixel Reset Noise |
| B7   | 1273                | 22                   | Pixel Reset Noise |
| B8   | 87                  | 2504                 | Pixel Reset Noise |

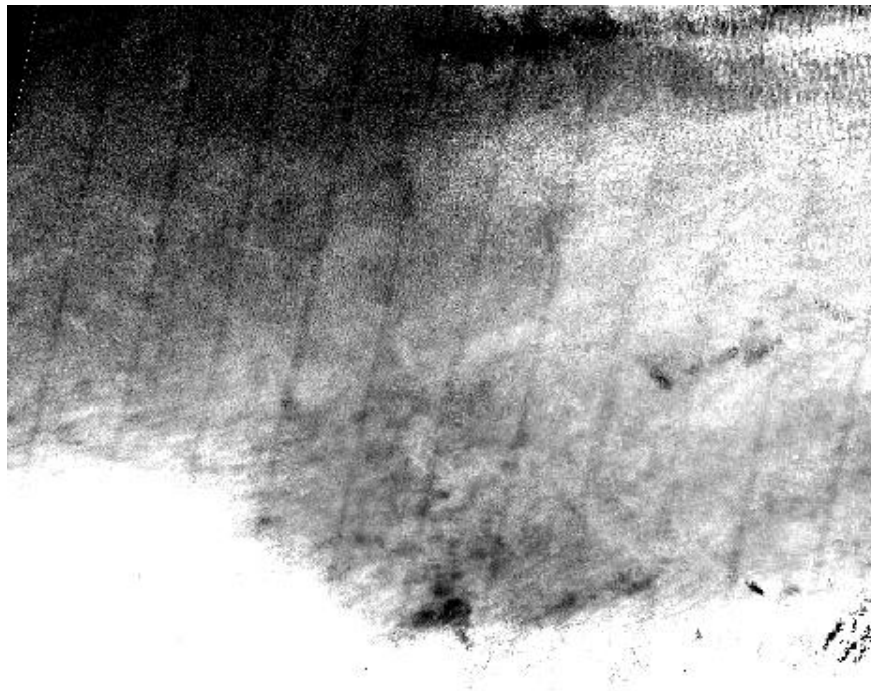
|   |  |  |
|---|--|--|
|  <p><b>OPT-MPC</b><br/>Optical Mission Performance Cluster</p> | <p><b>Optical MPC</b></p> <p><b>Data Quality Report – Sentinel-2 L1C MSI</b></p> <p><b>August 2022</b></p> | <p>Ref.: OMPC.CS.DQR.01.07-2022</p> <p>Issue: 78.0</p> <p>Date: 29/08/2022</p> <p>Page: 46</p> |
|---|--|--|

## 6 Product Features

### 6.1 Spectral Response Non-uniformity

In this section we report on a known feature of Sentinel 2 products created by the spectral response non-uniformity. This feature has been anticipated since the design phase and is compliant with mission specification.

This feature is characterized by along-track soft-edged darker or brighter stripes near the detector boundaries, as shown on the figure below. Indeed, the spectral response is slightly different at the edges of the detectors, especially for bands B03 and B05. When the spectrum of the scene has strong gradient over the spectral bandwidth of the detector, a difference in the measured radiometry can be observed (up to 2% in worst-cases).



*Figure 33: Along-track stripes resulting from spectral response non-uniformity (band B03).*

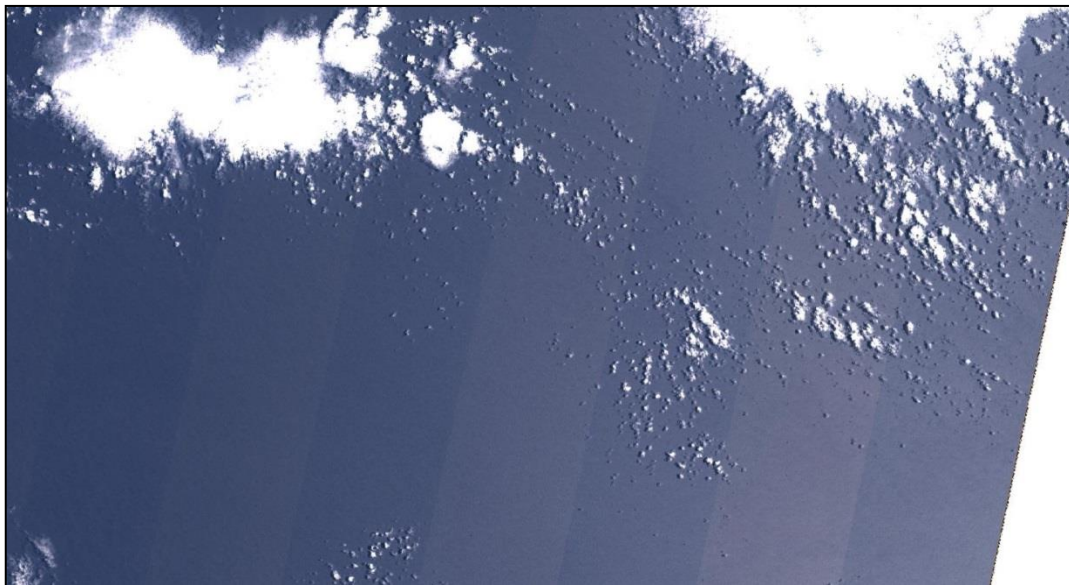
### 6.2 Parallax effects

In this section we report on parallax effects created by the staggered configuration of the focal plane. Indeed, the instrument swath is covered by 12 individual detectors assembled in a staggered manner. Because of this configuration, odd and even detectors do not see the ground under the same viewing angles. This can create visible effects on some images, as detailed in the next subsections.

|   |  |  |
|---|--|--|
|  | <p><b>Optical MPC</b></p> <p><b>Data Quality Report – Sentinel-2 L1C MSI</b></p> <p><b>August 2022</b></p> | <p>Ref.: OMPC.CS.DQR.01.07-2022</p> <p>Issue: 78.0</p> <p>Date: 29/08/2022</p> <p>Page: 47</p> |
|---|--|--|

### 6.2.1 Surface reflectance effects

Because the viewing angles are not the same for even and odd detectors, differences in measured radiometry can be observed on non-Lambertian surfaces. This is especially visible on Sun glint over sea surfaces (see Figure below).



*Figure 34: Stripe pattern over sea surface due to the observation parallax effect between odd and even detectors.*

### 6.2.2 Misregistration of High Altitude Objects

The processing algorithm ensures the co-registration of images acquired by all spectral bands and the detectors for features at ground level. Objects at a higher altitude like planes and clouds cannot be properly co-registered. As already reported in the first issue of the Data Quality Report, this effect leads to spectral misregistration (“rainbow” effect) and discontinuities between detectors.

Both effects can be seen in Figure 35 hereafter.

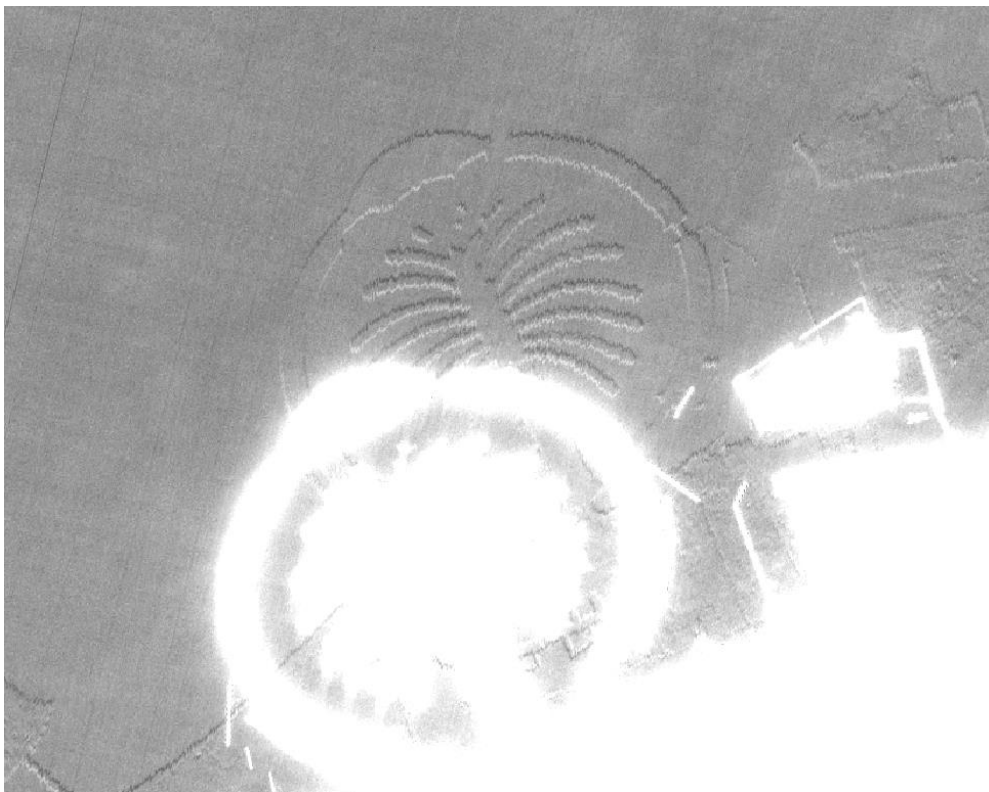




*Figure 35: Spectral misregistration and detector misalignment for object at high altitude (plane and contrail). This feature is not an anomaly.*

### 6.3 Gradient cross-talk

This feature can be seen on contrasted images on band B12 (typically near the coast). It can be explained by a cross-talk signal coming from the along-track gradient of the B11 image. The typical amplitude of the effect is 10 digital counts.



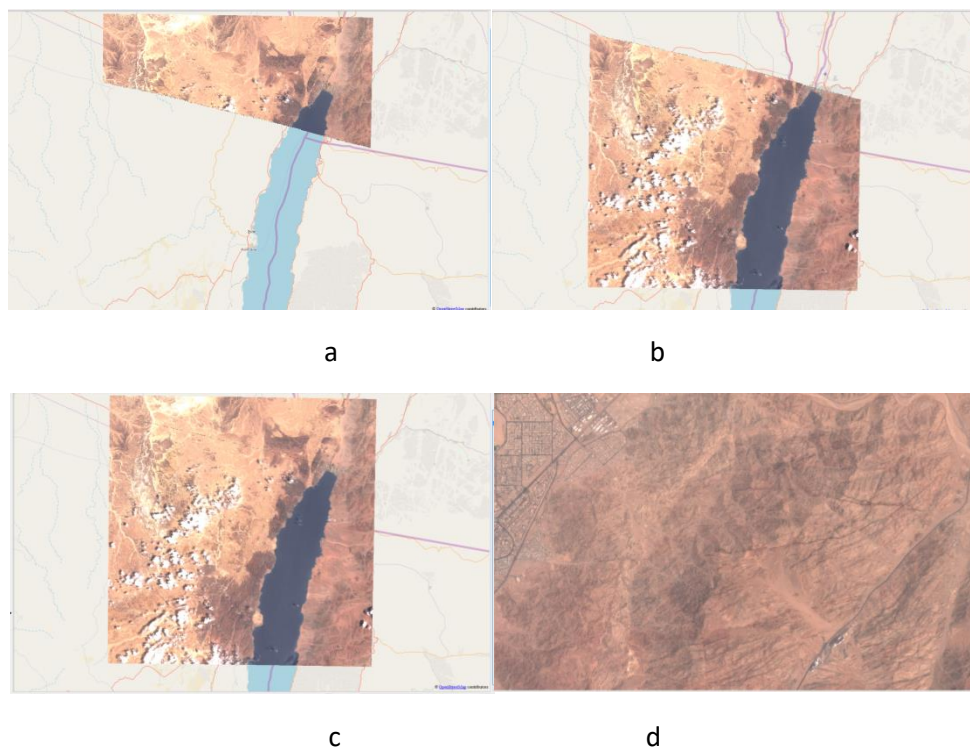
*Figure 36: Gradient cross-talk on band B12 (highly enhanced contrast).*

## 6.4 Data-strip overlap

Sentinel-2 products are generated by a network of several ground stations around the globe. Data acquired by the satellites are split into processing units called “data-strips” which are processed independently, and subsequently transferred to the Sentinel Data Hub. A given continuous acquisition sequence (or “data-take”) can be split into several data-strips. In that case, two different products are generated for level 1C tiles located at the interface between the data-strips.

The two products can be merged to reconstruct the full image.

However, one should be aware that the geometric refinement (see section 2.2.1) may introduce a small shift (a few meters) between the two tiles. This shift is not visible to the naked eye but can be measured by computing the co-registration between the products on their overlap area. This shift is zero if both products are unrefined, as in the figure below.



**Figure 37: Example of a pair of products at the overlap between two data-strips. a: product from the first data-strip, processed at Svalbard (SGS) b: product from the second data-strip, processed at Matera (MTI). c: the two products overlap seamlessly to reconstruct the complete acquisition. d: close-up near the transition line.**

## 6.5 Valid pixels

Users are advised that the pixel validity status may be different for different spectral bands: it is possible to have one band with valid data and one band with No Data (0) at the same location. This happens in particular at the western and eastern edges of the swath. Any multi-spectral processing should be done only on pixels having valid data for all spectral bands.

**End of document**