



S2 MPC

Data Quality Report

Ref. S2-PDGS-MPC-DQR



Authors Table



	Name	Company	Responsibility	Date	Signature
Written by	S. Clerc & MPC Team	ARGANS	<i>Technical Manager</i>	06/02/2017	
Verified by	O. Devignot	CS	<i>Quality Manager</i>	06/02/2017	
Approved by	L. Pessiot	CS	Service Manager	06/02/2017	

Table of contents

1. SCOPE OF THE DOCUMENT	5
2. MEASURED PRODUCT PERFORMANCES	6
2.1 Performances Overview	6
2.2 Geometric Performance	6
2.2.1 Geometric Calibration Status	6
2.2.2 Geometric Refinement and Global Reference Image (GRI)	7
2.2.3 Absolute Geolocation	7
2.2.4 Multi-Spectral Registration	8
2.2.5 Multi-Temporal Registration	9
2.3 Radiometric Performance	9
2.3.1 Radiometric Calibration Status	9
2.3.2 Radiometric Uncertainty	10
2.3.3 Noise	12
2.3.4 Modulation Transfer Function	14
3. PROCESSING CHAIN STATUS	15
3.1 Product Format	15
3.2 Status of Processing Baselines and Known Processing Anomalies	16
3.3 Archive Reprocessing	17
4. PRODUCT ANOMALIES	18
4.1 Introduction	18
4.2 Instrument Measurement Time metadata (#4)	18
4.3 Minimum Reflectance "0" (#5)	18
4.4 Detector Footprint at Equator (#6)	18
4.5 Missing Physical Gains metadata (#7)	19
4.6 Striping of SWIR Bands (#9)	19
4.7 Striping due to lost source packets (#10)	20
4.8 Missing Viewing Angles metadata (#11)	20
4.9 Anomalous Pixels (#12)	20
4.10 Noise on Band 10 Images (#13)	21
4.11 Geolocation and Co-registration Error (#14)	21
4.12 Strong Misregistration (#15)	22
4.13 Stretching of 60 m Bands (#16)	22
4.14 Misaligned detectors on band 1 (#17)	23
4.15 Geolocation Error (#18)	23
4.16 Product footprint on the ante-meridien (#19)	24
4.17 Degraded AUX files (#23)	24
4.18 Imprecise technical quality mask (#24)	24
4.19 Geolocation error on orbit 7174 (#25)	25
4.20 Incomplete manifest (#26)	25

4.21 Inaccurate footprint and incomplete metadata (#27)	25
5. PIXELS STATUS	26
5.1 Defective pixels	26
5.2 Reset Spike pixels	27
6. PRODUCT FEATURES	28
6.1 Spectral Response Non-uniformity	28
6.2 Parallax effects	28
6.2.1 Surface reflectance effects	29
6.2.2 Misregistration of High Altitude Objects	29
6.3 Across-Track noise	30

1. Scope of the Document

This document provides the status of Sentinel-2 mission products data quality.

It documents measured product performance vs. specifications, observed anomalies and known issues, the list of defective pixels, processing chain improvements associated to each Processing Baseline, and an outlook on product evolution.

Note that a reference article has been prepared to provide an in-depth presentation of Sentinel-2 Calibration and Validation methods and results after one year in operation (F. Gascon *et al.*, "Copernicus Sentinel-2 Calibration and Products Validation Status", submitted¹).

¹ <http://www.preprints.org/manuscript/201610.0078/v1>

2. Measured Product Performances

2.1 Performances Overview

The following overview table provides a summary of the Level-1C products data quality performances measured on products in Processing Baselines 02.01 and higher, for a set of key mission requirements.

Table 2-1: Summary of Sentinel-2 L1C products measured performances for mission key requirements.

Requirement	Description	Measured performance
Absolute geolocation (without ground control points)	The geo-location uncertainty shall be better than 20 m at 2σ confidence level (without Ground Control Points).	< 11 m at 95.5% confidence (baseline 02.04)
Multi-spectral registration	The inter-channel spatial co-registration of any two spectral bands shall be better than 0.30 of the coarser achieved spatial sampling distance of these two bands at 3σ confidence level.	< 0.3 pixel at 99.7% confidence
Absolute radiometric uncertainty	The absolute radiometric uncertainty shall be better than 5 % (goal 3%).	B1 to B12, excl. B10: < $5\% \pm 2\%$
SNR	The Signal-to-Noise Ratio (SNR) shall be higher than specified values (see Table 2-4 in this document)	All bands compliant with > 27% margin

Measured performances are detailed in the following sections.

2.2 Geometric Performance

2.2.1 Geometric Calibration Status

The constant monitoring of the instrument line-of-sight has revealed a small evolution of the biases since Q3 2016. Consequently the geometric calibration has been updated on November 15th.

An update of the geometric calibration is planned in the coming months to avoid reoccurrence of anomaly #18. The latter anomaly originated by an imperfect alignment of the back-up Star Tracker (STR3).

2.2.2 Geometric Refinement and Global Reference Image (GRI)

The L1C processing chain implements a geometric refinement step which aims at improving the repetitiveness of the image geolocation, in order to reach the multi-temporal geolocation requirement (< 0.3 pixel at 95%). The refinement step will be activated upon completion of the GRI and the final validation of the refining algorithm. At that point the processing baseline will be updated (major version change) and the archive will be reprocessed.

The GRI is a set of Level 1B images (in sensor frame) covering the whole globe with highly accurate geolocation information obtained through a spatio-triangulation algorithm using reference Ground Control Points. The images use the reference band (B04) and are mostly (but not entirely) cloud-free. The GRI is an internal database used only for processing and not for dissemination. In particular, the GRI is not meant to be a cloud-free mosaic of the globe. Once the geometric refinement is activated, all images will have essentially the same geolocation accuracy.

The elaboration of the GRI is currently on-going. Continental sub-blocks are first built, processed and validated individually. In a second step, the sub-blocks (Europe, Africa and Asia on one hand, North and South America on the other hand) will be consolidated to improve the consistency at the boundary of the sub-blocks. The elaboration status is presented in the table below:

GRI sub-block	Status
Europe	Ready and Validated
North-Africa/Middle-East	Ready and Validated
Australia	Ready and Validated
South-Africa	Ready and Validated
North-America	Input data collection in progress
South-America	Ready for processing
Asia	Ready and Validated
Islands	Input data collection in progress

2.2.3 Absolute Geolocation

The geolocation performance is constantly monitored. The latest estimation (on 44 products since 15/11/2016) is better than 8.05 at 95.5% (vs. requirement of 20 m for unrefined products), see figure below. This is compatible with the current best estimate of the long term mission performance without refining (10.5 m).

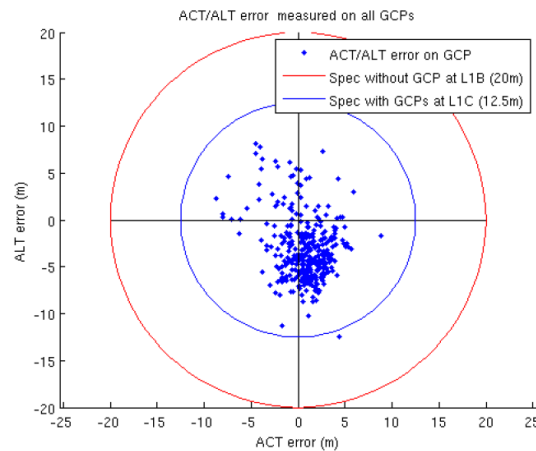


Figure 1: Geolocation performance measured on 44 products since 15/11/2016 (for all Ground Control Points in Across-Track/Along-Track frame).

2.2.4 Multi-Spectral Registration

The co-registration requirement (< 0.3 pixel at 99.7% confidence) is met for all band couples.

Table 2-2: Multi-Spectral co-registration performance (per band couple and detector number). Requirement is 0.3 pixel.

Bref/Bsec - Det	CE@99.73%	Bref/Bsec - Det	CE@99.73%
B04/B03-D01	0.237	B05/B11-D01	0.189
B04/B03-D02	0.214	B05/B11-D02	0.222
B04/B03-D03	0.202	B05/B11-D03	0.181
B04/B03-D04	0.165	B05/B11-D04	0.15
B04/B03-D05	0.182	B05/B11-D05	0.16
B04/B03-D06	0.168	B05/B11-D06	0.147
B04/B03-D07	0.203	B05/B11-D07	0.151
B04/B03-D08	0.162	B05/B11-D08	0.143
B04/B03-D09	0.146	B05/B11-D09	0.127
B04/B03-D10	0.145	B05/B11-D10	0.111
B04/B03-D11	0.135	B05/B11-D11	0.125
B04/B03-D12	0.122	B05/B11-D12	0.113
B11/B12-D01	0.259	B05/B12-D01	0.212
B11/B12-D02	0.292	B05/B12-D02	0.221
B11/B12-D03	0.218	B05/B12-D03	0.178
B11/B12-D04	0.155	B05/B12-D04	0.151
B11/B12-D05	0.182	B05/B12-D05	0.141
B11/B12-D06	0.133	B05/B12-D06	0.121

Bref/Bsec - Det	CE@99.73%	Bref/Bsec - Det	CE@99.73%
B11/B12-D07	0.109	B05/B12-D07	0.115
B11/B12-D08	0.121	B05/B12-D08	0.117
B11/B12-D09	0.107	B05/B12-D09	0.113
B11/B12-D10	0.084	B05/B12-D10	0.107
B11/B12-D11	0.114	B05/B12-D11	0.114
B11/B12-D12	0.091	B05/B12-D12	0.096

2.2.5 Multi-Temporal Registration

The multi-temporal registration error for one tile is estimated as the mean measured error for all control points of the tile. Then the global performance is taken as the 95.5% percentile of the value for all tiles. According to this methodology, the current performance is 1.2 pixel. Figure 3 shows the histogram of the distribution of multi-temporal registration errors, showing a peak at 0.3 pixels.

It is recalled that the objective is to meet the required 0.3 pixel performance (95.5% confidence level) with the activation of the geometric refinement using the GRI.

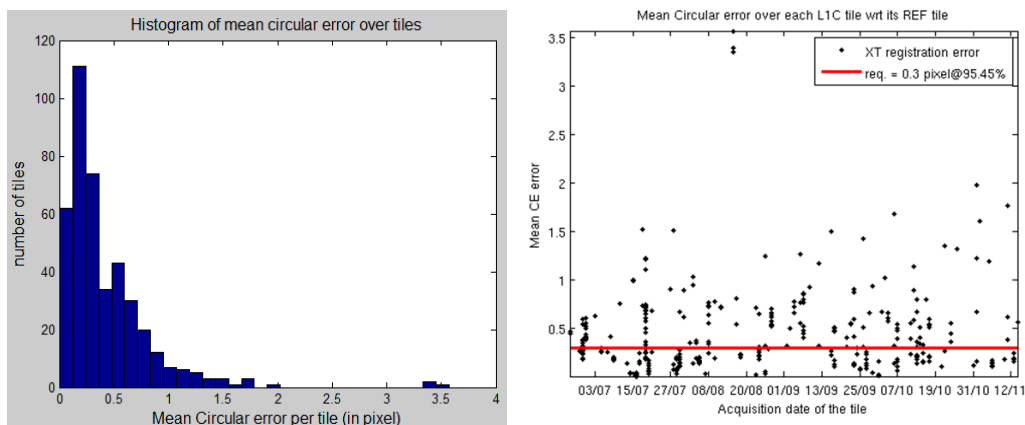


Figure 2: Histogram (left) and Time series (right) of the multi-temporal performance. The 0.3 pixel requirement will be applicable only after activation of the geometrical refinement. The current performance is 1.2 pixel at 95% confidence.

2.3 Radiometric Performance

2.3.1 Radiometric Calibration Status

Radiometric calibrations are performed routinely at the beginning of each month. Decontamination operations are scheduled every 6 months (January and July).

The January 2017 decontamination is scheduled on week 2. A new radiometric calibration will be performed after the decontamination. In the interval necessary to process, the data (a few days) radiometric accuracy will be somewhat degraded, especially for SWIR bands (a few %).

2.3.2 Radiometric Uncertainty

Radiometric validation has been performed using several methods:

- “Rayleigh” method: measurement of the Rayleigh atmospheric backscattering over deep ocean sites.
- Comparison with in-situ data.
- Measurement over well characterized, temporally stable desert areas (Pseudo-Invariant Calibration Sites or PICS).
- Comparison with other sensors (Landsat-8 OLI).

The first two methods indicate a radiometry slightly above the reference (typically 2.5%) for visible bands but still within requirements.

The results of the different methods are presented in the figure below. Results are provided for all bands, except B10 (water vapour absorption band) for which direct validation is not possible. All results are compatible with the 5% radiometric accuracy requirement. Results for band B05 and B09 (705 and 945 nm in the figure below) are less reliable because of the significant impact of gaseous absorption (O₂ and water vapour).

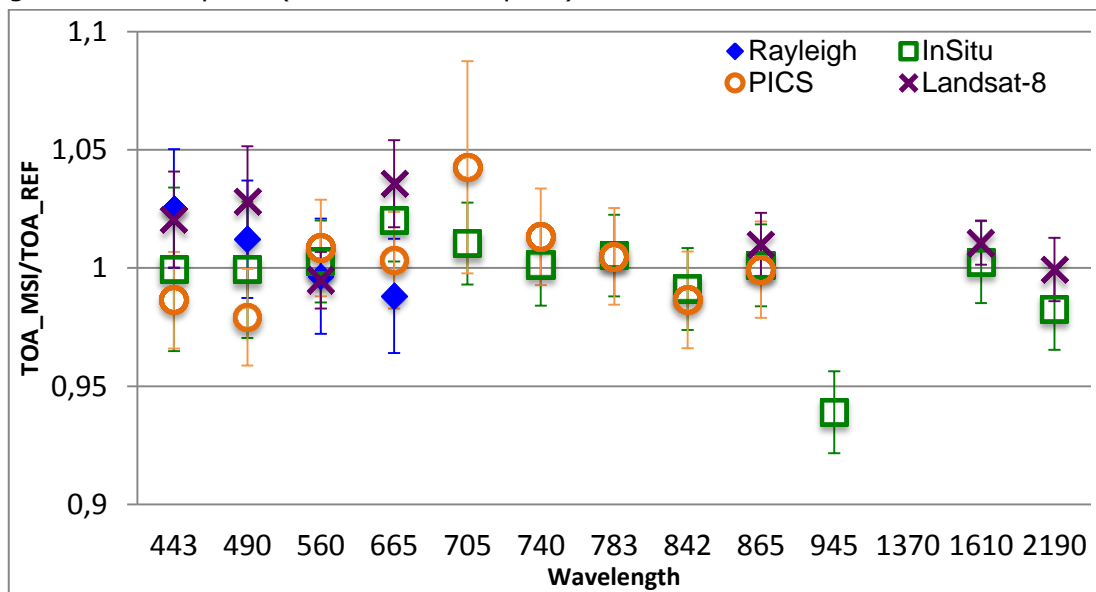


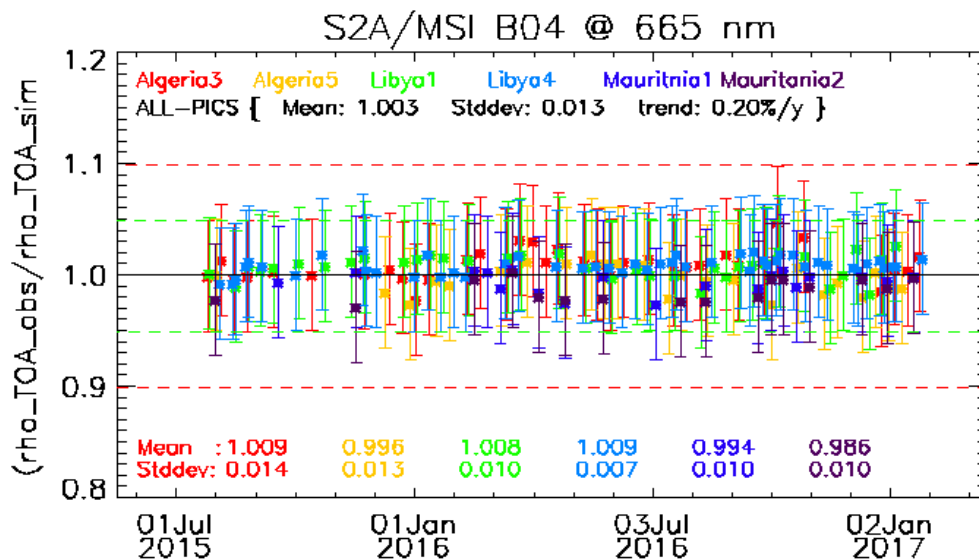
Figure 3: Comparison of radiometric accuracy for all spectral bands (except B10): ratio of S2A measurement on reference. Error bars indicate the method uncertainty.

Tabulated results for bands B01 to B8A presented below indicate the effectiveness and reliability of the on-board calibration method.

Table 2-3: Best estimate of calibration gains from validation.

S2A/MSI	Wavelength (nm)	Gain Coefficient	Standard Deviation
B01	443	1.0079	0.0182
B02	490	1.0047	0.0207
B03	560	1.0006	0.0062
B04	665	1.0118	0.0206
B05	705	1.0265	0.0228
B06	740	1.0073	0.0084
B07	783	1.0051	0.0003
B08	842	0.9888	0.0033
B8A	865	1.0035	0.0057

Time series of measurements are also produced to monitor the evolution in time of the radiometric response, in particular to detect a possible degradation of the diffuser. The current assessment is compatible with the specified stability requirement for all visible and NIR bands (< 1% per year).



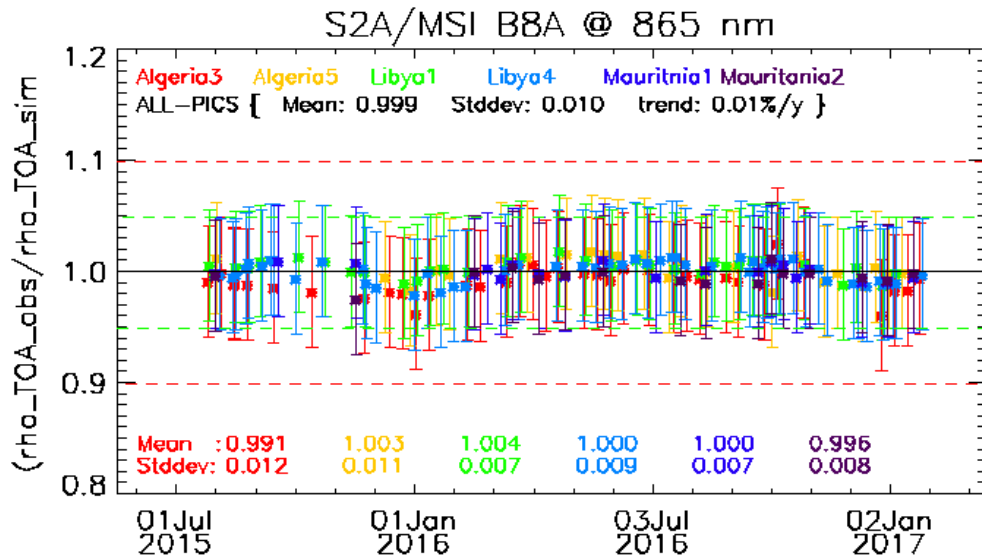


Figure 4: Time series of the ratio as observed reflectance over simulated from S2A/MSI for band B04 (665 nm, top) and band B08 (865 nm, bottom) over the 6 PICS Cal/Val-sites. Error bars indicate the method uncertainty.

2.3.3 Noise

The Signal-to-Noise Ratio (SNR) performances estimates have been slightly revised for 60 m bands to better take into account the effect of spatial binning. The performances remain excellent. The SNR is higher than 160 (worst-case for band B8A).

Table 2-4: Estimated SNR performance at reference radiance.

Spectral Band	B1	B2	B3	B4	B5	B6	B7	B8	B8A	B9	B10	B11	B12
Ref. radiance [W/m ² /sr/μm]	129	128	128	108	74.5	68	67	103	52.5	9	6	4	1.5
Measured	1372	214	249	230	253	220	227	221	161	222	390	159	217
Requirement	129	154	168	142	117	89	105	174	72	114	50	100	100
Margin (%)	963	39	48	62	116	147	116	27	124	95	680	59	117

As seen in the figure below, the noise characteristics are very stable over time.

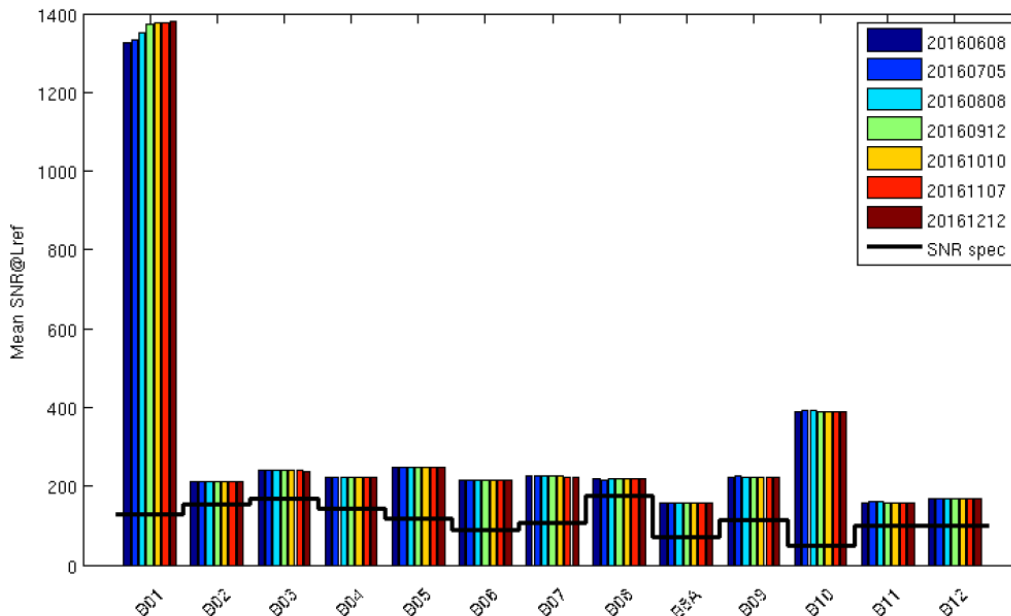


Figure 5: Evolution of the SNR performance since 06/08/2016.

Another aspect of the image noise is the so-called Fixed Pattern Noise: this is the residual pixel radiometric error after equalization. The Fixed Pattern Noise is estimated on quasi-uniform ground scenes. The following figure compares the estimated Fixed Pattern Noise with respect to the requirement extrapolated at the radiance of the scene. The methodology overestimates the noise due to the contribution of the scene noise. However the measured FPN is largely better than requirement for VNIR bands. The performance is less good on SWIR bands, which reflects in part the impact of atmospheric signal noise for those bands and in part the relatively faster evolution of the response of SWIR pixels between two calibration operations. Note that diffuser lifetime considerations limit the calibration operations to once per month.

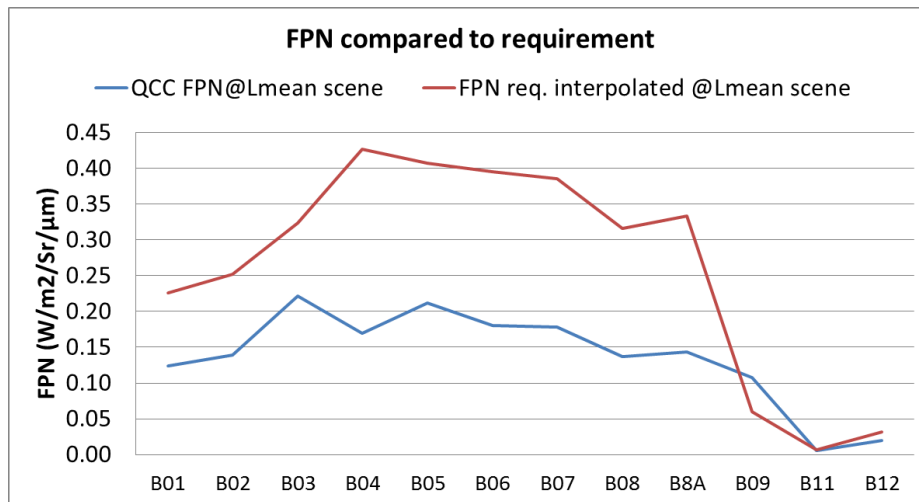


Figure 6: Measured Fixed Pattern Noise (residual error after equalization) on quasi-uniform scenes (blue curve), compared to requirement interpolated at scene radiance (red curve). The noise is better than requirements for VNIR bands and close to requirements for SWIR bands.

2.3.4 Modulation Transfer Function

The Modulation Transfer Function (MTF) has been estimated by analysing images with sharp edges for all bands (except B10 for which in-flight assessment is difficult).

Globally, see Table 2-5, the across track values measured in flight are lower than those expected from ground measurements. The MTF is above the maximum value requirement for B5, B6, B7 and B8A for the across track direction. For the along track direction, the requirement is generally met (marginally in some cases). Note that only the minimum value requirement has a direct impact on image quality. This requirement is satisfied for all bands.

Table 2-5: MTF performance assessment.

Spectral Band	Measured ACT	Measured ALT	Requirement
B01	0.34±0.03	0.28±0.03	0.15 < MTF < 0.45
B02	0.25±0.06	0.27±0.06	0.15 < MTF < 0.30
B03	0.27±0.03	0.28±0.04	0.15 < MTF < 0.30
B04	0.25±0.04	0.23±0.03	0.15 < MTF < 0.30
B05	0.42±0.03	0.34±0.05	0.15 < MTF < 0.30
B06	0.35±0.12	0.33±0.05	0.15 < MTF < 0.30
B07	0.35±0.07	0.34±0.03	0.15 < MTF < 0.30
B08	0.26±0.11	0.25±0.06	0.15 < MTF < 0.30
B8A	0.36±0.06	0.31±0.04	0.15 < MTF < 0.30
B09	0.25±0.10	0.27±0.03	0.15 < MTF < 0.45
B11	0.20±0.04	0.24±0.04	0.15 < MTF < 0.30
B12	0.24±0.07	0.22±0.06	0.15 < MTF < 0.30

3. Processing Chain Status

3.1 Product Format

On December 6th, a new naming convention has been introduced (Product Specification Document version 14). The new convention leads to shorter product paths with less redundancy of information. See below for an illustration of the new naming convention.

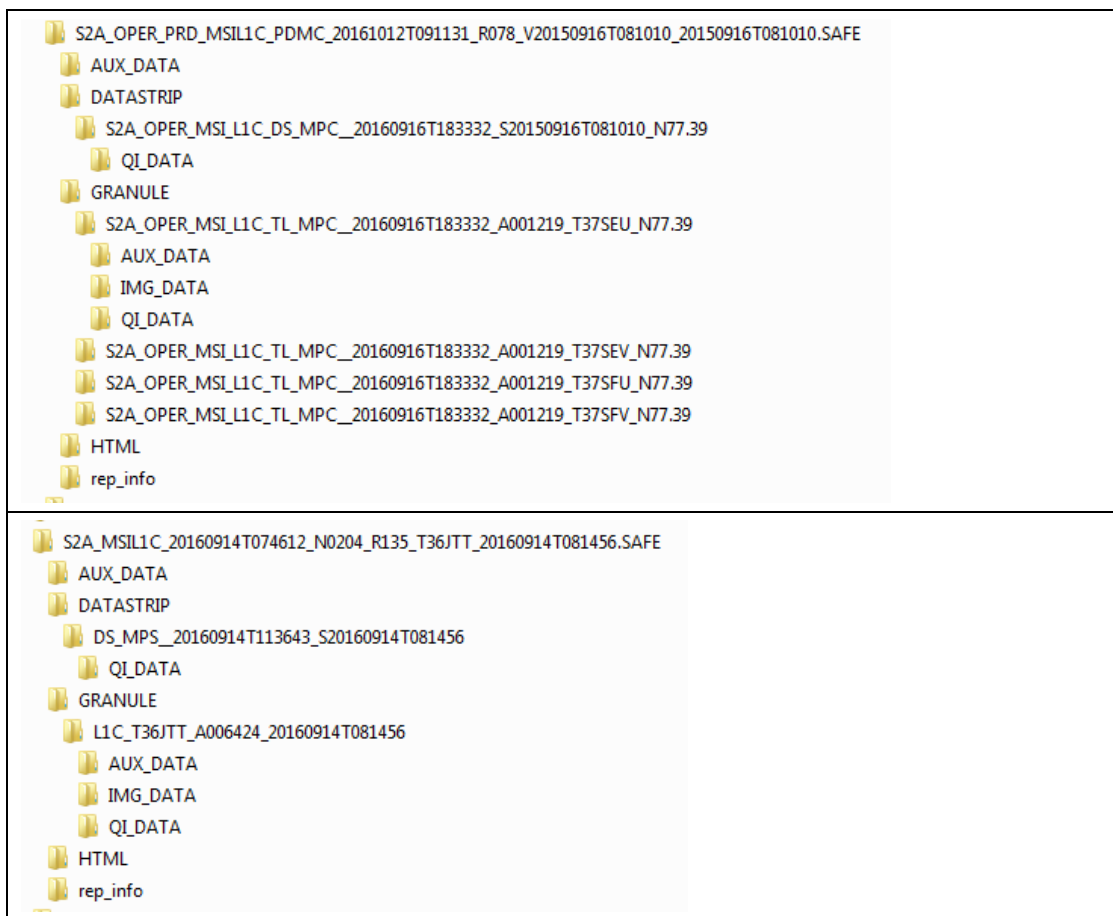


Figure 7: Product format overview. Top previous format (PSD issue 13), bottom: new format (PSD issue 14) for single-tile products.

Similarly to the previous convention, two dates are included in the SAFE product name. However the meaning of these dates has changed:

- In the previous convention the first date referred to the product creation date and the second one to the sensing date
- In the compact naming convention, the first date is the sensing date while the second date is the "product discriminator", a reference date also based on the sensing date. The product discriminator date can be in some cases earlier or later than the sensing date.

Note that processing date can be still found in the datastrip metadata xml file.

The new products also contain an RGB "True Colour" image (TCI) in JPEG2000 format. The TCI image is created from the B02 (Blue), B03 (Green) and B04 (Red) bands, rescaled between 0 and 255 digital counts, with the following parameters:

- 0 digital count: No Data value
- 1 digital count: minimum reflectance level
- 255 digital counts: saturation level at reflectance 0.2

3.2 Status of Processing Baselines and Known Processing Anomalies

The table below summarizes the evolutions of the processing baseline and the known processing anomalies affecting the production. The dates mentioned in the table refer to the product creation date.

Table 3-1: Summary of identified processing anomalies and associated processing baselines.

Anomaly ID	Baseline number	02.01		02.02	02.03	02.04			
	Deployment date	27/01/2016	31/03/2016	03/05/2016	09/06/2016	15/06/2016	03/08/2016	26/01/2017	
	Anomaly title								
4	Instrument Measurement Time metadata		yes						
5	Minimum Reflectance "0"	yes							
6	Detector Footprint at Equator	yes							
7	Missing Physical Gains metadata	yes							
11	Missing Viewing Angles metadata	yes, not systematic							
12	Anomalous Pixels	yes, few products impacted							
15	Strong Misregistration				yes				
16	Stretched 60 m bands	A few orbits impacted							
19	Wrong footprint on antemeridien						yes		
23	Degraded AUX files	yes							
24	Imprecise technical quality mask						yes		

Anomaly ID	Baseline number	02.01		02.02	02.03	02.04		
	Deployment date	27/01/2016	31/03/2016	03/05/2016	09/06/2016	15/06/2016	03/08/2016	26/01/2017
	Anomaly title							
25	Geolocation error on orbit 7174						Yes, orbit 7174	
26	Incomplete manifest	Yes						
27	Incorrect footprint and missing metadata						Yes few product impacted	

3.3 Archive Reprocessing

A reprocessing campaign of images acquired during the commissioning period (from launch till 30/11/2015) has been completed. Another reprocessing has been started on products with baseline 02.00, originally affected with a wrong tile numbering. The new products will be created with baseline 02.04, multi-tile format.

A few products with a major anomaly have been released during the reprocessing campaign:

- All products with sensing time before 30/11/2015 and baseline number 02.01 and 02.02 (geolocation and mis-registration errors)
- Product from Autumn 2015 processed between the 13 and the 26 of October 2016 (incorrect quantization level)
- Products from 24 and 25th of September 2015 processed on the 29th of December 2016 (incorrect quantization level)
- Products from orbits 1296 to 1304 processed on October 2016 (large geolocation error due to a GPS anomaly)

These products are progressively removed from the archive and should not be used. Products from Autumn 2015 will be reprocessed with the correct quantization level in the coming weeks.

Finally a minor anomaly affects some products from September 2015 (see anomaly #9 in the next chapter). SWIR bands are strongly degraded. However VISNIR bands are meeting quality standards, so these products will remain available in the future.

4. Product Anomalies

4.1 Introduction

This section describes all known product anomalies. Each anomaly is tagged with a code #N" allowing to link it to a given Processing Baseline through Table 3-1. The table below provides the status of anomalies which are not related to processing and can therefore not be corrected through reprocessing. It complements Table 3-1 above.

Table 4-1: Anomalies not related to processing.

Anomaly ID	Anomaly title	Criticality	Unit	Affected products	Product status
9	Striping of SWIR bands	Minor	S2A	A few orbits, not systematic	Available
10	Striping of Visible bands	Major	S2A	A few orbits, not systematic	Removed from archive
13	B10 noise	Minor	S2A	Products with high reflectances	Available
14	Geolocation error	Major	S2A	Orbits 3218, 4080 and 4081	Removed from archive
17	Misaligned detectors on band 1	Minor	S2A	A few orbits impacted (beginning of the datastrip)	Available
18	Geolocation Error	Minor	S2A	Orbits 6003 to 6011	Available

4.2 Instrument Measurement Time metadata (#4)

Within the satellite ancillary metadata, the value of Instrument Measurement Time (IMT) is not represented correctly due to a formatting error.

4.3 Minimum Reflectance "0" (#5)

Valid pixels with zero reflectance could not be distinguished from "no data" pixels (coded with value 0). Zero reflectance pixels could be observed on the water vapour absorption band B10 or on SWIR band B12 over water surfaces.

It has been decided to truncate reflectance values to digital number 1 (i.e. reflectance 0.0001) to solve this issue, only "no data" pixels will be marked with value 0.

4.4 Detector Footprint at Equator (#6)

An error was found in the detector footprint gml file for tiles immediately North of the equator (systematic error). This error is corrected with baseline 02.01 after end of March 2016.

4.5 Missing Physical Gains metadata (#7)

Band 12 is missing in the “physical gains” metadata of the user product. However the full list of physical gains is present in the metadata at granule level. This error was corrected early August 2016 and recent products are not anymore affected.

4.6 Striping of SWIR Bands (#9)

This anomaly is characterized by along-track stripes on some detectors of SWIR band images (see image below). Other detectors are also misaligned (along-track shift).

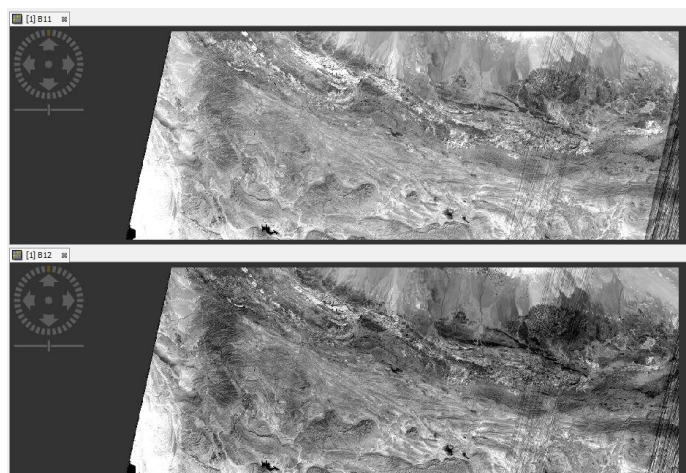


Figure 8: Striping of SWIR bands (anomaly #9). Top: B11, Bottom, B12.

This anomaly occurred during commissioning as a result of an incorrect instrument configuration. Users are advised to use only VISNIR bands for the corresponding orbits.

1118	1205	1302	1404
1143	1218	1308	
1146	1227	1314	
1151	1234	1319	
1156	1244	1326	
1159	1246	1329	
1171	1251	1337	
1175	1256	1342	
1186	1261	1343	
	1272	1348	
	1274	1391	
	1298	1394	

Table 4-2: List of orbits affected by anomaly #9.

4.7 Striping due to lost source packets (#10)

Data downlink issue sometimes lead to missing instrument source packets. This results in missing or corrupted pixels in L1C image, typically affecting only odd or even detectors and some spectral bands. The figure below presents an occurrence observed recently.

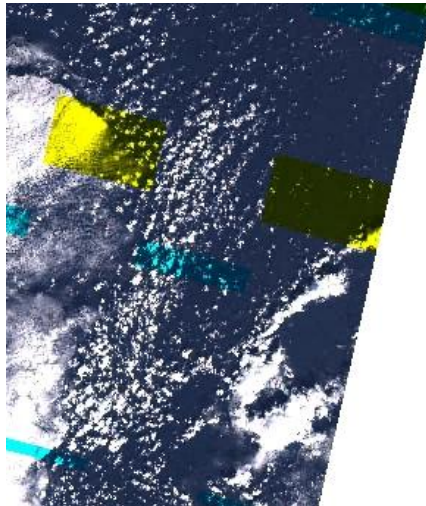


Figure 9: L1C product affected by a large number of missing packets. This type of feature is not considered as an anomaly and will not lead to removal of affected products.

Under the current quality control policy, this effect is not considered as an anomaly. Products affected by missing packets will remain in the archive.

This type of behaviour is expected and traced in the product:

- a technical quality check is performed at datastrip level and reported in the End User product metadata in case of failure;
- the number of missing packets is reported in the datastrip metadata;
- the affected area is described in the technical quality masks (TECQA gml files).

4.8 Missing Viewing Angles metadata (#11)

For some products, the mean viewing angles in the tile metadata were missing for some bands in some products (not systematic). This anomaly is solved with baseline 02.01 after end of March 2016.

4.9 Anomalous Pixels (#12)

This anomaly is characterized by anomalous pixel values at the boundary of a datastrip. This anomaly has been corrected with baseline 02.02.

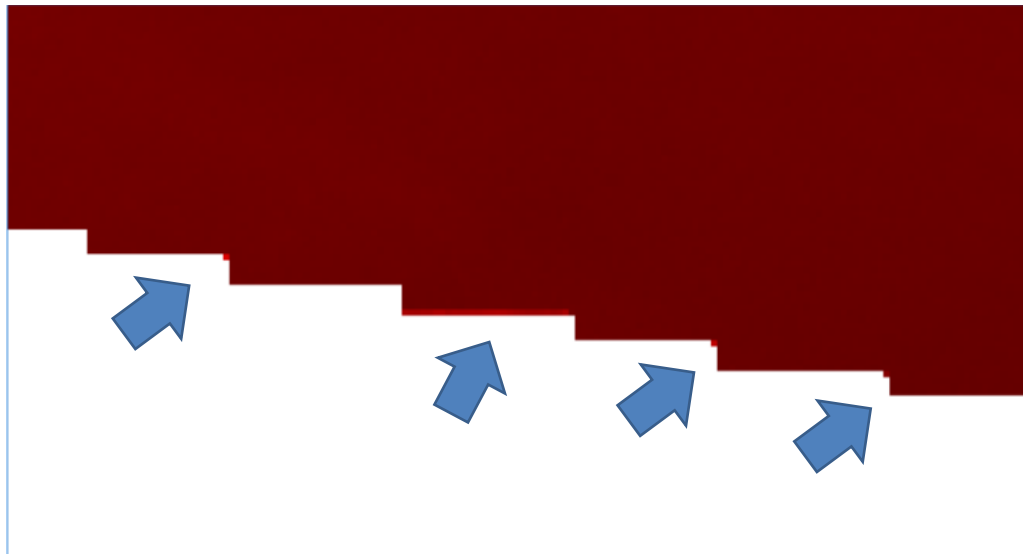


Figure 10: Anomalous pixels on band B4 (anomaly #12).

4.10 Noise on Band 10 Images (#13)

This feature is characterized by noise patterns on bright images. It has now been identified as generated by saturation of the detector. This effect is not an anomaly in itself, however the saturation is currently not correctly reported in the image quality masks. A modification of the processor is in progress to solve this issue.

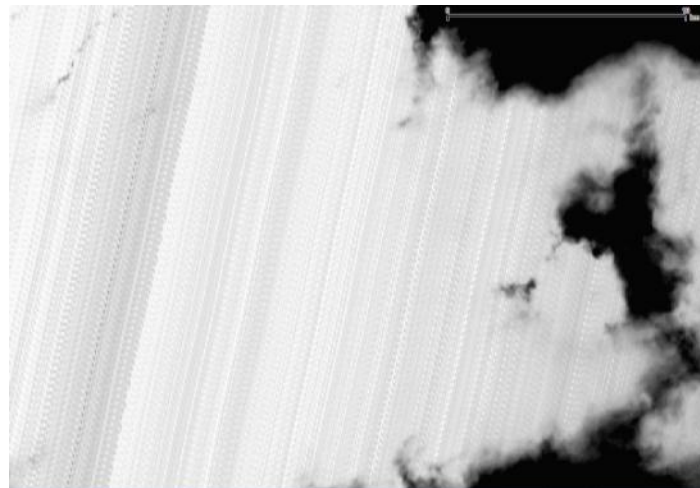


Figure 11: Along-track noise pattern on B10 images over bright clouds (#13).

4.11 Geolocation and Co-registration Error (#14)

A major anomaly has led to a strong and temporary geolocation and spectral registration errors. The anomaly occurred on February 3rd (orbit 3218) and April 3rd (orbits 4080, 4081 and 4082). This anomaly has been correctly identified by the automatic on-line quality control and the degraded geometric performance is

reported in the product metadata (geometric quality check status is "FAILED"). After identification of the anomaly, the defective products have been removed from the public archive.

The root cause of this anomaly has been identified. Missing data from attitude control telemetry is at the origin of the anomaly. An optimization of the management of the on-board telemetry has been implemented since and should avoid any re-occurrence.



Figure 12: Spectral co-registration error (anomaly #14).

4.12 Strong Misregistration (#15)

Processing Baseline 02.03 deployed on 09/06/2016 was affected by an anomaly due to an incorrect configuration of the processing centres. This anomaly results in a strong spectral misregistration. This issue was rapidly identified, defective products have removed from the archive and subsequently reprocessed with baseline 02.02. After correction of the configuration error, baseline 02.04 was deployed on 15/06/2016.

4.13 Stretching of 60 m Bands (#16)

This anomaly is characterized by an incorrect appearance of the 60 m bands: images are stretched across-track and discontinuities are visible between detector boundaries. A few occurrences have been observed, and none since 27/04/2016. This anomaly is currently under investigation.

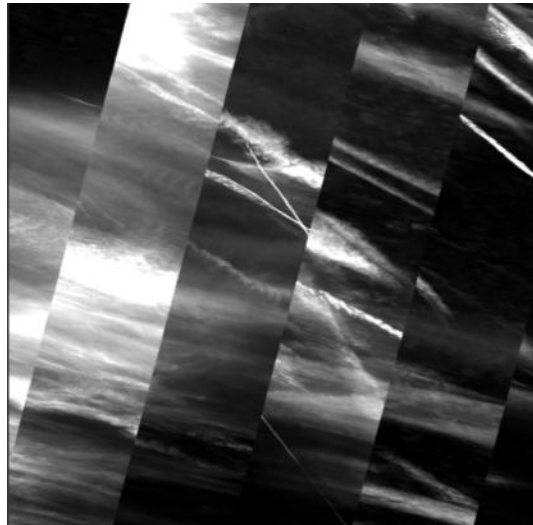


Figure 13: Stretching of 60 m bands (anomaly #16).

4.14 Misaligned detectors on band 1 (#17)

An anomaly on the receiving ground station occurred on 12th of July and led to corrupted products for a few orbits (5509 to 5525). The anomaly affects only band 1 and is limited the first products for the datastrips (Northern part). It is characterized by a misalignment of the odd and even detectors, as illustrated in the figure below.

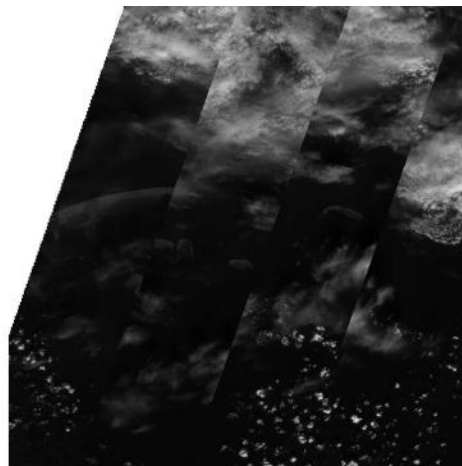


Figure 14: Detector misalignment on band B1 (anomaly #17).

A possible correction of this anomaly by an ad-hoc reprocessing is under study.

4.15 Geolocation Error (#18)

This anomaly occurred while the satellite was performing a collision avoidance manoeuvre. One Star Tracker was temporarily blinded by the Sun, which led to a degradation of the attitude estimation. As a result, the geolocation of the products acquired during this period (orbits 6003 to 6011) is affected by a variable geolocation error of up to 100 meters.

The anomaly seems related to the handling of the redundant Star Tracker in the attitude estimation system. Further analysis is on-going and possible remediation is investigated.

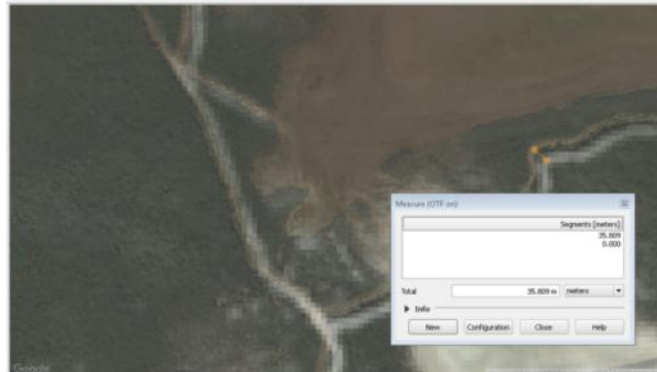


Figure 15: S2 image superimposed with reference map, showing a geolocation error of 35 m (anomaly #18).

4.16 Product footprint on the ante-meridiem (#19)

With the introduction of single tile products in October 2016, an issue has been identified in the product footprint for tiles crossing the ante-meridiem (180° longitude). The footprint should be composed of two rectangles in (above -180° and below $+180^\circ$). Instead, only the second rectangle is present.

The update of the processing chain to correct this anomaly is under way.

4.17 Degraded AUX files (#23)

This anomaly affects the ECMWF auxiliary files, for some specific tiles. The files are truncated and contain aberrant values. The root cause of the anomaly has been identified and a fix is currently under implementation.

4.18 Imprecise technical quality mask (#24)

Since October 2016, technical quality masks (TECQA) are reporting instance of lost data packets (see anomaly #10). However it has been found that the masks are not perfectly accurate (see figure below). This anomaly is currently under investigation.

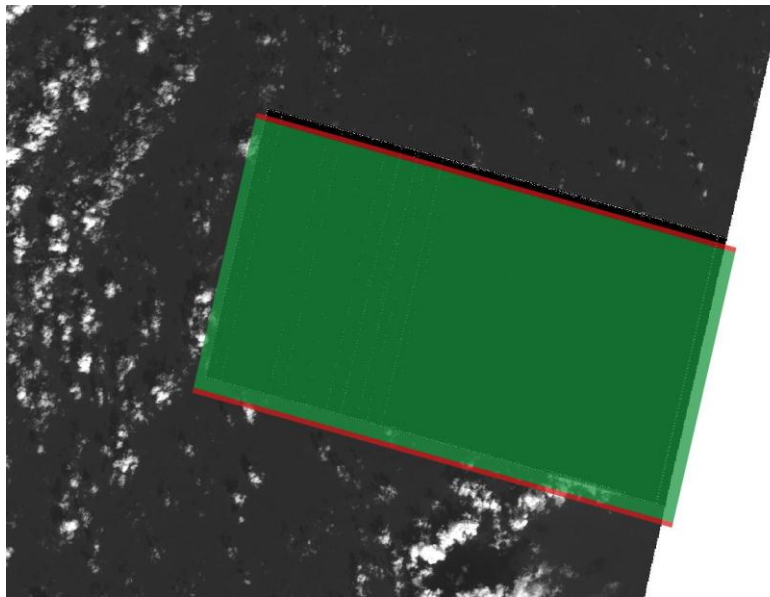


Figure 16: Technical Quality masks (green: lost packets, red: degraded packets) overlaid over an affected imaged. A small gap exists between the mask and the affected area (anomaly #21).

4.19 Geolocation error on orbit 7174 (#25)

A geolocation error of more than 100 m has been observed on the first datastrip of orbit 7174 (acquired 05/11/2016). A reprocessing is planned for this datastrip to correct this anomaly.

4.20 Incomplete manifest (#26)

Auxiliary files are currently not listed in the User Product manifest. Fixing of this anomaly is in progress.

4.21 Inaccurate footprint and incomplete metadata (#27)

This anomaly occurred on January 20th 2017 following a change in the user product generation chain, and was solved on January 26th 2017. The anomaly affected the diffusion of products on the SciHub, and as a result few products affected by this anomaly have been disseminated. The characteristics of this anomaly are:

- Coarse precision of product footprint (1/3°)
- Missing Datastrip Identifier and granule Identifier attributes.

5. Pixels Status

5.1 Defective pixels

In the following tables are listed all the identified defective pixels which are currently replaced by an interpolation of neighbouring pixels. The health status has been verified after the last decontamination operation in January.

Table 5-1: Defective pixels on Band 10.

Band B10			Current status & R2DEPI defective pixels	
Band	Detector	Pixel number (from 0)	Current status	Last updated
B10	4	1104	Defective	16/11/2015
B10	10	879	Defective	23/06/2015
B10	10	1174	Defective	23/06/2015

Table 5-2: Defective pixels on band 12.

Band B12			Current status & R2DEPI defective pixels	
Band	Detector	Pixel number (from 0)	Current status	Last updated
B12	1	440	Defective	26/08/2015
B12	1	703	Defective	06/11/2015

5.2 Reset Spike pixels

During the MSI design phase, it has been identified that a few pixels of the 10 m bands are affected by an electronic cross-talk during detector read-out. This results in errors which can reach a few digital counts, depending on the observed scene.

We provide below the list of affected pixels.

Table 5-3: Pixel affected by reset spike noise.

Band	Detector	Pixel number (from 0)	Current status
B02, B03, B04	1,3,5,7	35	Pixel Reset Noise
	1,3,5,7	489	Pixel Reset Noise
	1,3,5,7	781	Pixel Reset Noise
	1,3,5,7	961	Pixel Reset Noise
	1,3,5,7	1036	Pixel Reset Noise
	1,3,5,7	1177	Pixel Reset Noise
	1,3,5,7	1252	Pixel Reset Noise
	1,3,5,7	1724	Pixel Reset Noise
	1,3,5,7	1822	Pixel Reset Noise
B02, B03, B04	2,4,6,8	2556	Pixel Reset Noise
	2,4,6,8	2102	Pixel Reset Noise
	2,4,6,8	1810	Pixel Reset Noise
	2,4,6,8	1630	Pixel Reset Noise
	2,4,6,8	1555	Pixel Reset Noise
	2,4,6,8	1414	Pixel Reset Noise
	2,4,6,8	1339	Pixel Reset Noise
	2,4,6,8	867	Pixel Reset Noise
	2,4,6,8	769	Pixel Reset Noise
B08	1,3,5,7	35	Pixel Reset Noise
	2,4,6,8	2556	Pixel Reset Noise

6. Product Features

6.1 Spectral Response Non-uniformity

In this section we report on a known feature of Sentinel 2 products created by the spectral response non-uniformity. This feature has been anticipated since the design phase and is compliant with mission specification.

This feature is characterized by along-track soft-edged darker or brighter stripes near the detector boundaries, as shown on the figure below. Indeed, the spectral response is slightly different at the edges of the detectors, especially for bands B03 and B05. When the spectrum of the scene has strong gradient over the spectral bandwidth of the detector, a difference in the measured radiometry can be observed (up to 2% in worst-cases).

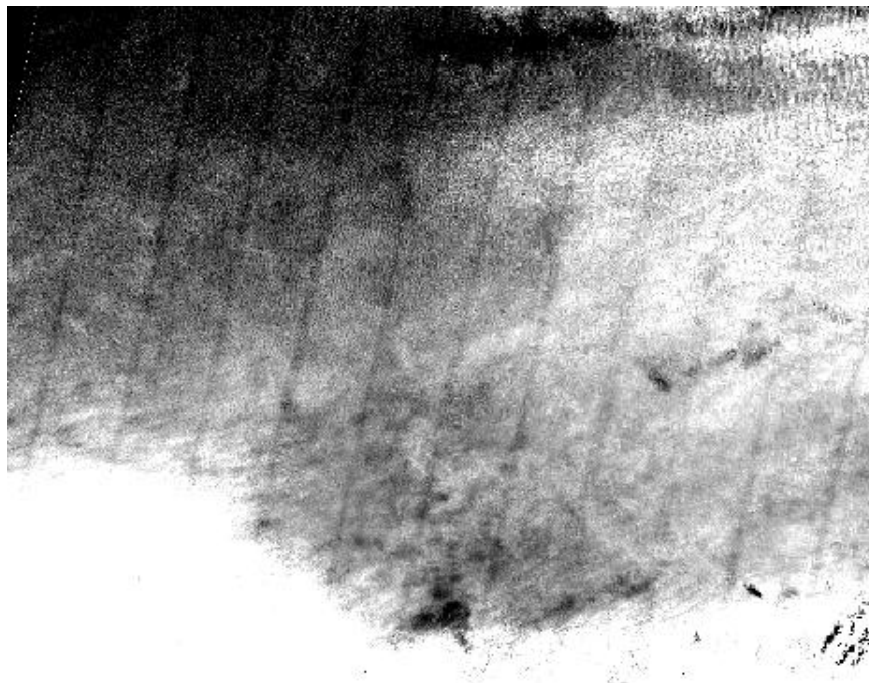


Figure 17: Along-track stripes resulting from spectral response non-uniformity (band B03).

6.2 Parallax effects

In this section we report on parallax effects created by the staggered configuration of the focal plane. Indeed the instrument swath is covered by 12 individual detectors assembled in a staggered manner. Because of this configuration, odd and even detectors do not see the ground under the same viewing angles. This can create visible effects on some images, as detailed in the next subsections.

6.2.1 Surface reflectance effects

Because the viewing angles are not the same for even and odd detectors, differences in measured radiometry can be observed on non-Lambertian surfaces. This is especially visible on Sun glint over sea surfaces (see Figure below).

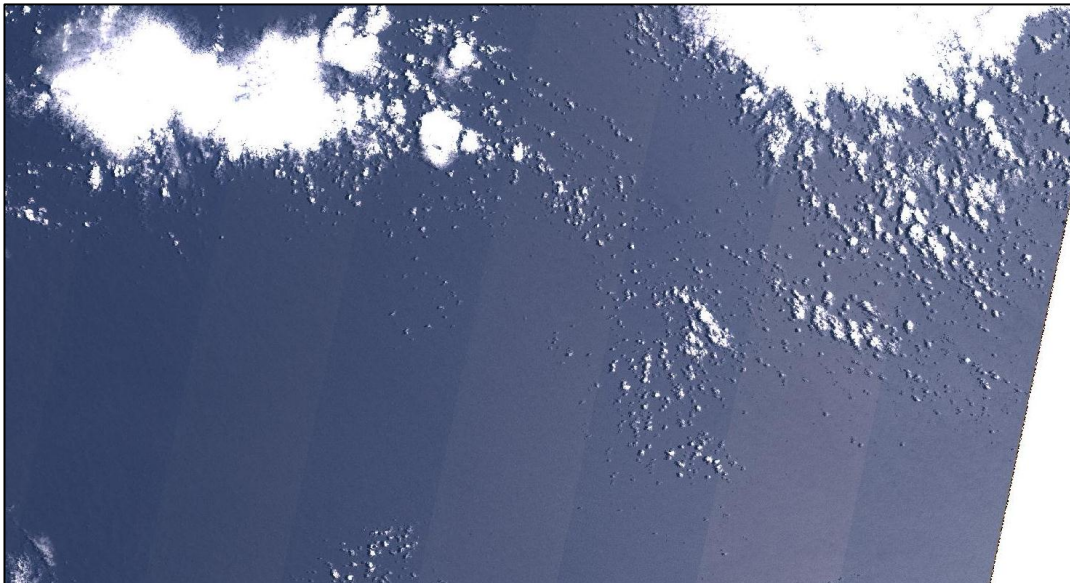


Figure 6-18: Stripe pattern over sea surface, due to the observation parallax effect between odd and even detectors.

6.2.2 Misregistration of High Altitude Objects

The processing algorithm ensures the coregistration of images acquired by all spectral bands and the detectors for features at ground level. Objects at a higher altitude like planes and clouds cannot be properly coregistered. As already reported in the first issue of the Data Quality Report, this effect leads to spectral misregistration ("rainbow" effect) and discontinuities between detectors.

Both effects can be seen in Figure 19 below.



Figure 19: Spectral misregistration and detector misalignment for object at high altitude (plane and contrail). This feature is not an anomaly.

6.3 Across-Track noise

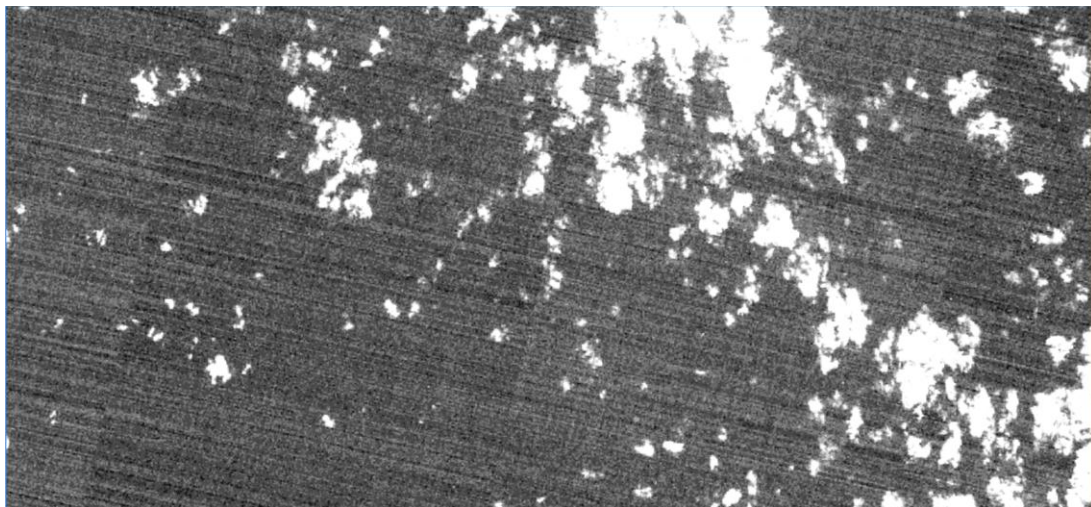


Figure 20: Across-Track intra-detector noise pattern

This feature can be observed in very dark images (typically on B10 or B12 over the sea). It is characterized by across-track lines covering a whole detector. The typical range of this noise pattern is a few digital counts, and therefore within the requirements of the mission.

This phenomenon is induced by the compression noise on "blind" pixels used for dark signal correction. A solution to filter out this noise has been identified and its operational implementation is currently under study.

End of document